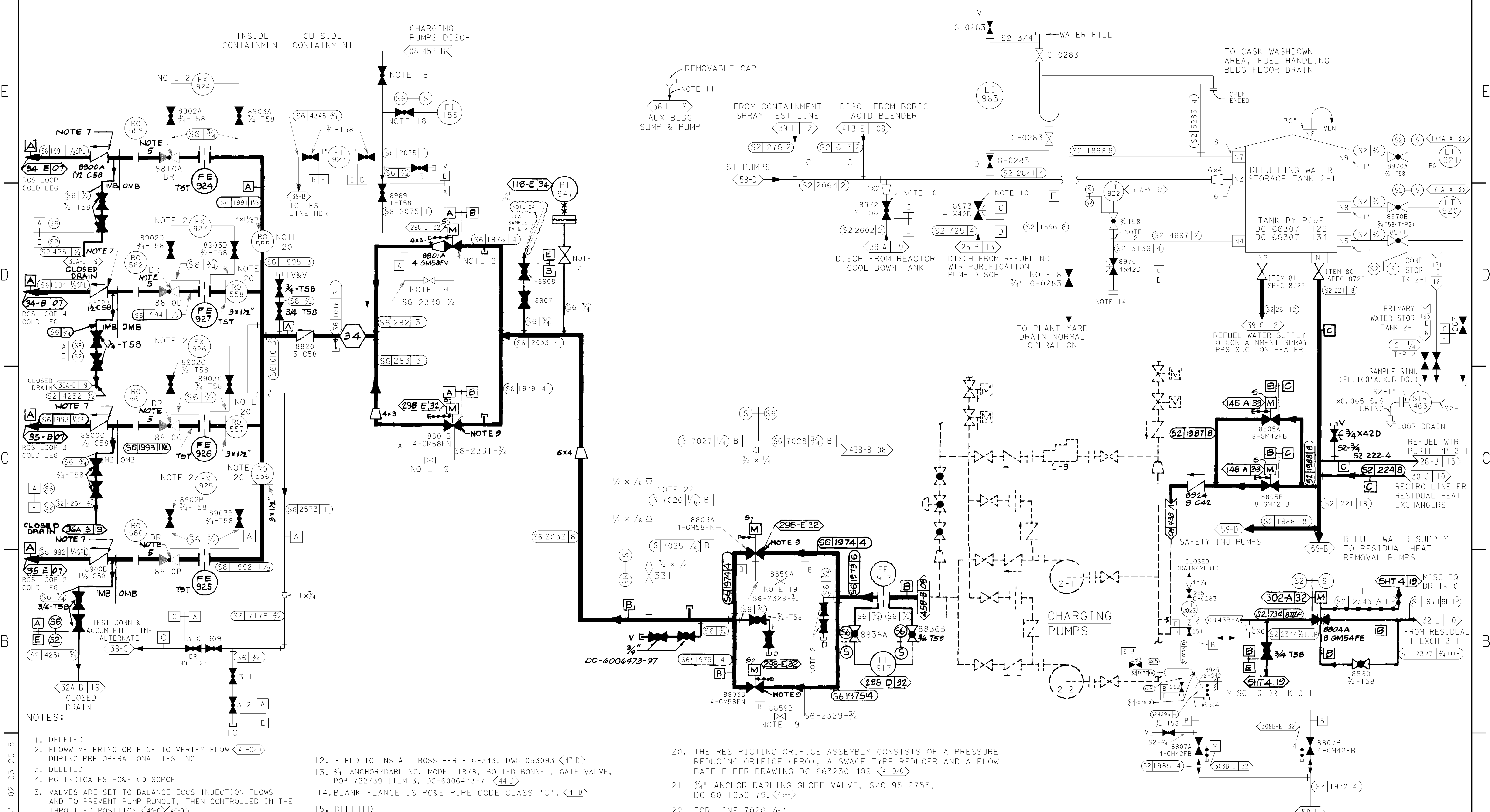


E
D
C
B
A

E
D
C
B
A



- NOTES:**
1. DELETED
 2. FLOW METERING ORIFICE TO VERIFY FLOW DURING PRE OPERATIONAL TESTING
 3. DELETED
 4. PG INDICATES PG&E CO SPOE
 5. VALVES ARE SET TO BALANCE ECCS INJECTION FLOWS AND TO PREVENT PUMP RUNOUT, THEN CONTROLLED IN THE THROTTLED POSITION.
 6. ALL WESTINGHOUSE ITEM NUMBERS IN SIS ARE SHOWN WITHOUT PREFIX PG&E SI
 7. SPECIAL LINE INSULATION INCLUDING CHECK
 8. WHEN WATER IS CONTAMINATED BLIND FLANGGE WITH HOSE BIBB MUST BE INSTALLED DRAINING TO MISC EQUIP DRAIN TANK 0-1
 9. VELAN MNF VALVE
 10. CHAIN OPERATED
 11. EMBEDDED PIPE, NO LINE NUMBER
 12. FIELD TO INSTALL BOSS PER FIG-343, DWG 053093
 13. 3/4" ANCHOR/DARLING, MODEL 1878, BOLTED BONNET, GATE VALVE, PO# 722739 ITEM 3, DC-6006473-7
 14. BLANK FLANGE IS PG&E PIPE CODE CLASS "C".
 15. DELETED
 16. DELETED
 17. DELETED
 18. 1" ANCHOR DARLING GLOBE VALVE 1878, STOCK CODE 94-3771 DC-6006473-157
 19. 3/4" ANCHOR DARLING GLOBE VALVE, STOCK CODE 94-2820 DC-6006473-97
 20. THE RESTRICTING ORIFICE ASSEMBLY CONSISTS OF A PRESSURE REDUCING ORIFICE (PRO), A SWAGE TYPE REDUCER AND A FLOW BAFFLE PER DRAWING DC 663230-409
 21. 3/4" ANCHOR DARLING GLOBE VALVE, S/C 95-2755, DC 6011930-79.
 22. FOR LINE 7026-1/16: PG&E S-SPEC WITH THE FOLLOWING SPECIAL REQUIREMENTS: -TUBING SIZE SHALL BE 1/16" OD WITH WALL THICKNESS OF 0.020" -SEAMLESS STAINLESS STEEL TUBING MATERIAL GRADE TP304 MAY BE SUBSTITUTED FOR GRADE TP316. ALL OTHER REQUIREMENTS OF S-SPEC SHALL APPLY. -LENGTH OF LINE 7026-1/16: 24 FEET +/- 2 FEET (REF. DCP N-50631)
 23. MECHANICAL TRAVEL STOP INSTALLED ON VALVE 310 TO LIMIT OPEN STEM TRAVEL (REF: DWG# 6011930-140, PAGE 3)
 24. CONNECTION POINT FOR FLEX EQUIPMENT

UNIT 2

REF. DWG. DC 663216-63 SAFETY INJ. PUMP 2-1 SUCTION

DIABLO CANYON POWER PLANT - PG&E CO.

SAFETY INJECTION SYSTEM

DRAWING	SHEET	PAGE	REV
108009	4	0	77

RASTER=108009s4.dgn
 DGN=108009s4.dgn
 CAD User=MNRU Date: 02-03-2015