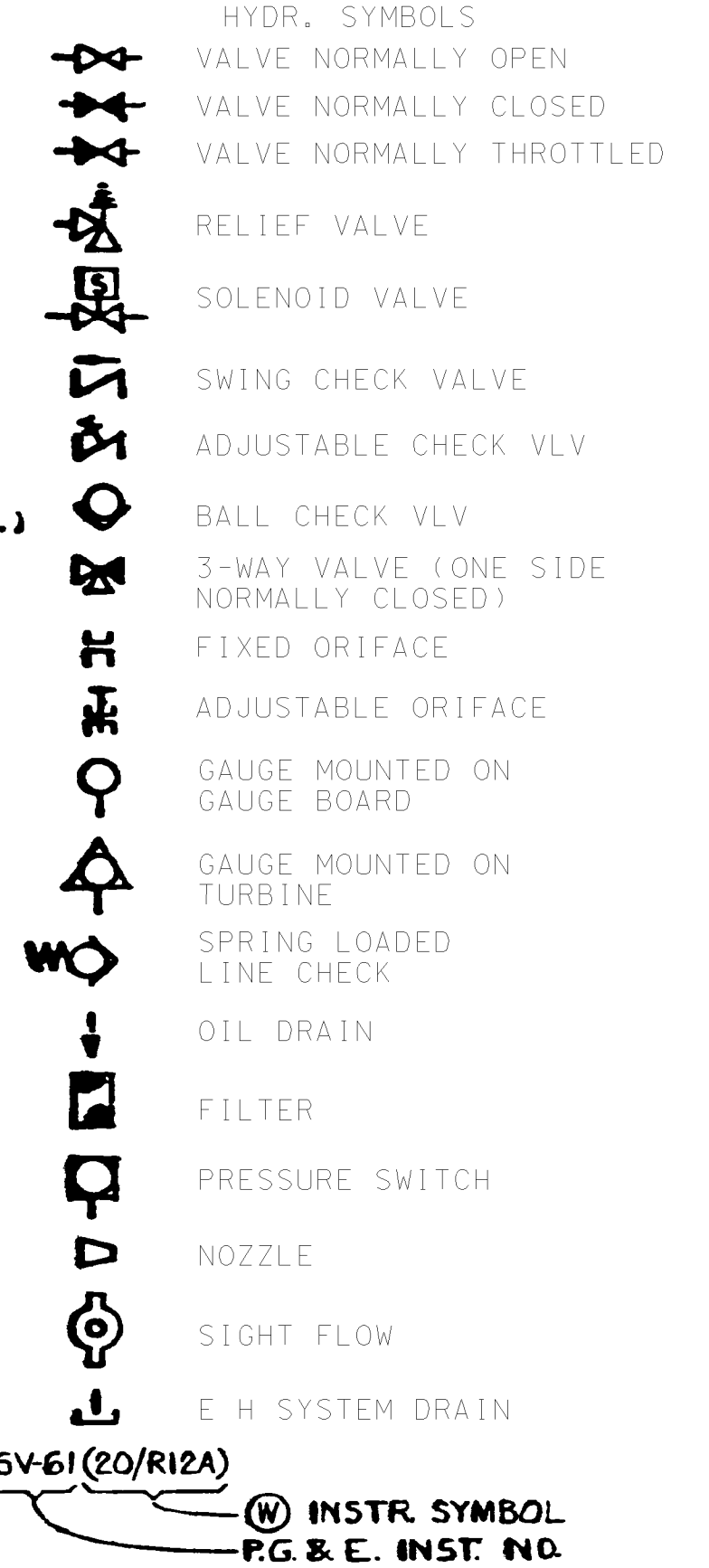


LEGEND



LIST OF PRESSURE GAUGES
 1-BEARING OIL
 2-PUMP SUCTION OIL
 3-PUMP DISCHARGE
 4-AUTO STOP VLV TEST
 5-LOW VACUUM TRIP TEST
 6-THRUST BRG TRIP TEST
 7-LOW BRG OIL TRIP TEST
 11-BEARING LIFT OIL
 12-AC BEARING OIL PUMP DISCHARGE
 13-DC BEARING OIL PUMP DISCHARGE

E H SYSTEM GAUGES
 8-MP-1 DISCHARGE
 9-MP-2 DISCHARGE
 10-EH SYSTEM (AFTER CHECK VLV.)

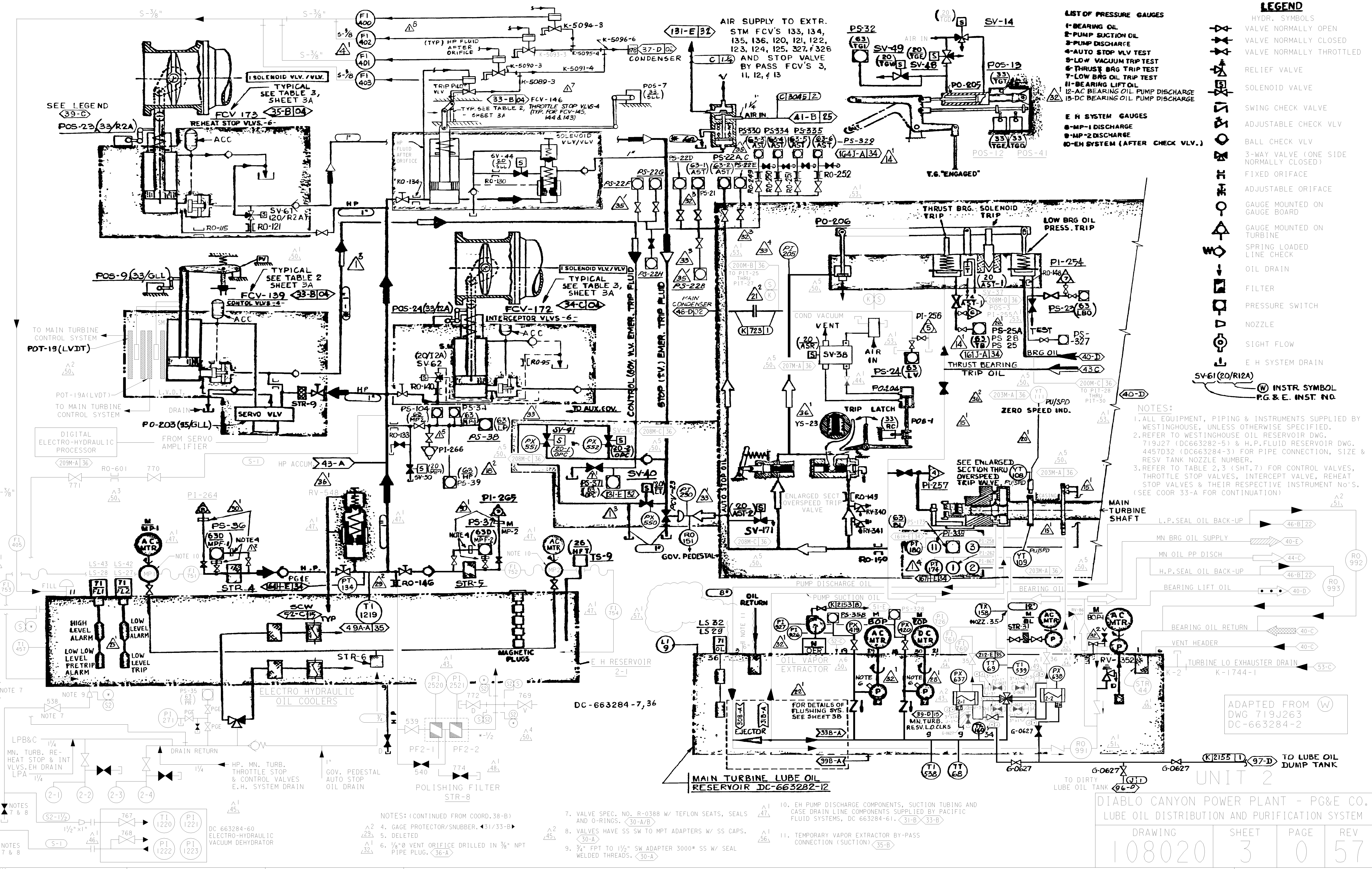
NOTES:
 1. ALL EQUIPMENT, PIPING & INSTRUMENTS SUPPLIED BY WESTINGHOUSE, UNLESS OTHERWISE SPECIFIED.
 2. REFER TO WESTINGHOUSE OIL RESERVOIR DWG. 719J27 (DC663282-5) & H.P. FLUID RESERVOIR DWG. 4457D32 (DC663284-3) FOR PIPE CONNECTION, SIZE & RESV TANK NOZZLE NUMBER.
 3. REFER TO TABLE 2, 3 (SHT. 7) FOR CONTROL VALVES, THROTTLE STOP VALVES, INTERCEPT VALVE, REHEAT STOP VALVES & THEIR RESPECTIVE INSTRUMENT NO'S. (SEE COOR 33-A FOR CONTINUATION)

ADAPTED FROM (W) DWG 719J263 DC-663284-2

UNIT 2

DIABLO CANYON POWER PLANT - PG&E CO.
 LUBE OIL DISTRIBUTION AND PURIFICATION SYSTEM

DRAWING	SHEET	PAGE	REV
108020	3	0	57



- NOTES: (CONTINUED FROM COOR. 38-B)
4. GAGE PROTECTOR/SNUBBER. (31/33-B)
 5. DELETED
 6. 1/8" Ø VENT ORIFICE DRILLED IN 3/8" NPT PIPE PLUG. (36-A)
 7. VALVE SPEC. NO. R-0388 W/ TEFLON SEATS, SEALS AND O-RINGS. (30-A/B)
 8. VALVES HAVE SS SW TO MPT ADAPTERS W/ SS CAPS. (30-A)
 9. 3/4" FPT TO 1/2" SW ADAPTER 3000* SS W/ SEAL WELDED THREADS. (30-A)
 10. EH PUMP DISCHARGE COMPONENTS, SUCTION TUBING AND CASE DRAIN LINE COMPONENTS SUPPLIED BY PACIFIC FLUID SYSTEMS, DC 663284-61. (31-B/33-B)
 11. TEMPORARY VAPOR EXTRACTOR BY-PASS CONNECTION (SUCTION) (35-B)