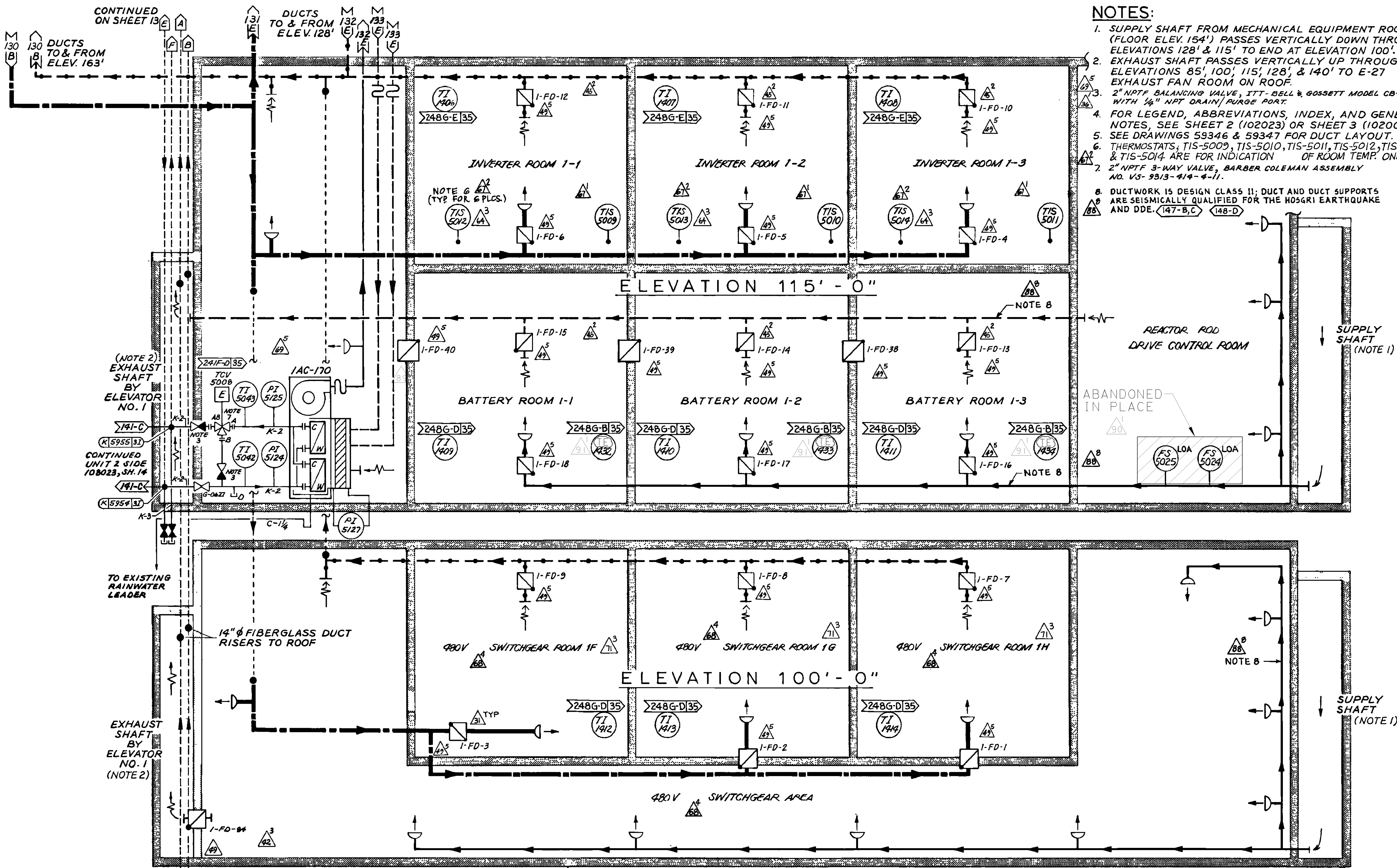


**NOTES:**

- SUPPLY SHAFT FROM MECHANICAL EQUIPMENT ROOM (FLOOR ELEV. 154') PASSES VERTICALLY DOWN THROUGH ELEVATIONS 128' & 115' TO END AT ELEVATION 100'.
- EXHAUST SHAFT PASSES VERTICALLY UP THROUGH ELEVATIONS 85', 100', 115', 128', & 140' TO E-27 EXHAUST FAN ROOM ON ROOF.
- 2" NPTF BALANCING VALVE, ITT-BELL & GOSSETT MODEL CB-2 WITH 1/4" NPT DRAIN/PURGE PORT.
- FOR LEGEND, ABBREVIATIONS, INDEX, AND GENERAL NOTES, SEE SHEET 2 (102023) OR SHEET 3 (102001).
- SEE DRAWINGS 59346 & 59347 FOR DUCT LAYOUT.
- THERMOSTATS, TIS-5009, TIS-5010, TIS-5011, TIS-5012, TIS-5013 & TIS-5014 ARE FOR INDICATION OF ROOM TEMP. ONLY.
- 2" NPTF 3-WAY VALVE, BARBER COLEMAN ASSEMBLY NO. V5-9313-414-4-11.
- DUCTWORK IS DESIGN CLASS II; DUCT AND DUCT SUPPORTS ARE SEISMICALLY QUALIFIED FOR THE HOSGRI EARTHQUAKE AND DDE. (147-B,C) (148-D)



**AUX. BLDG.: 480V SWITCHGEAR, BATTERY, INVERTER, AND REACTOR ROD DRIVE CONTROL ROOMS**

DIABLO CANYON POWER PLANT - PG&E CO.  
VENTILATION & AIR CONDITIONING SYSTEMS

DRAWING	SHEET	PAGE	REV
102023	14	0	91

08-16-2011	AJFJ	Fxc2	KERSI J. DALAL	MECHANICAL	M 16690	3/31/2012	REVISED PER DAS-6*428
DATE	DWN	RE	PROFESSIONAL ENGINEER	PE DISC.	PE#	PE EXP.	

RASTER=102023sl14.dgn  
 DGN=102023sl14.dgn  
 CAD User: AJFJ Date: 08-16-2011