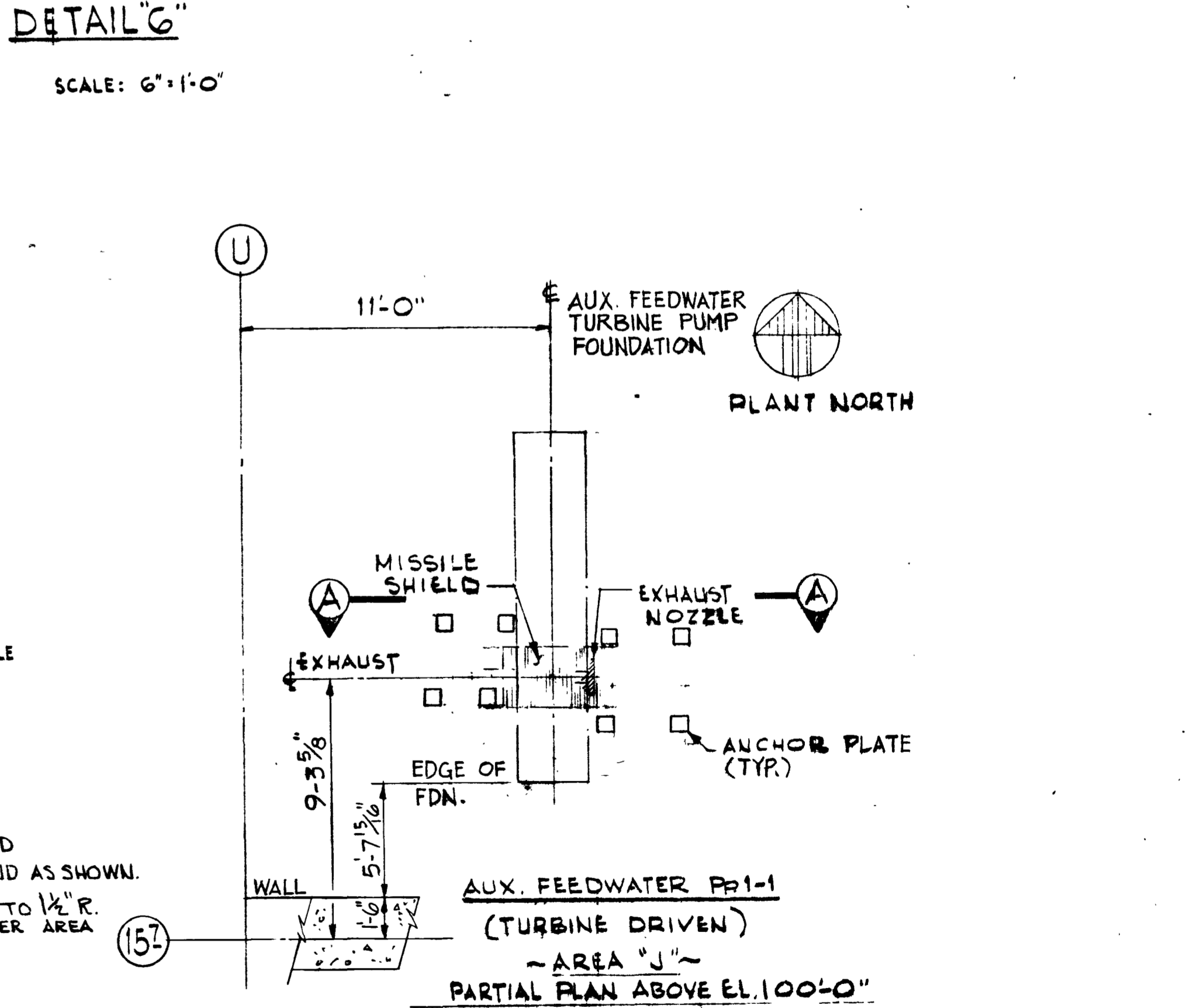
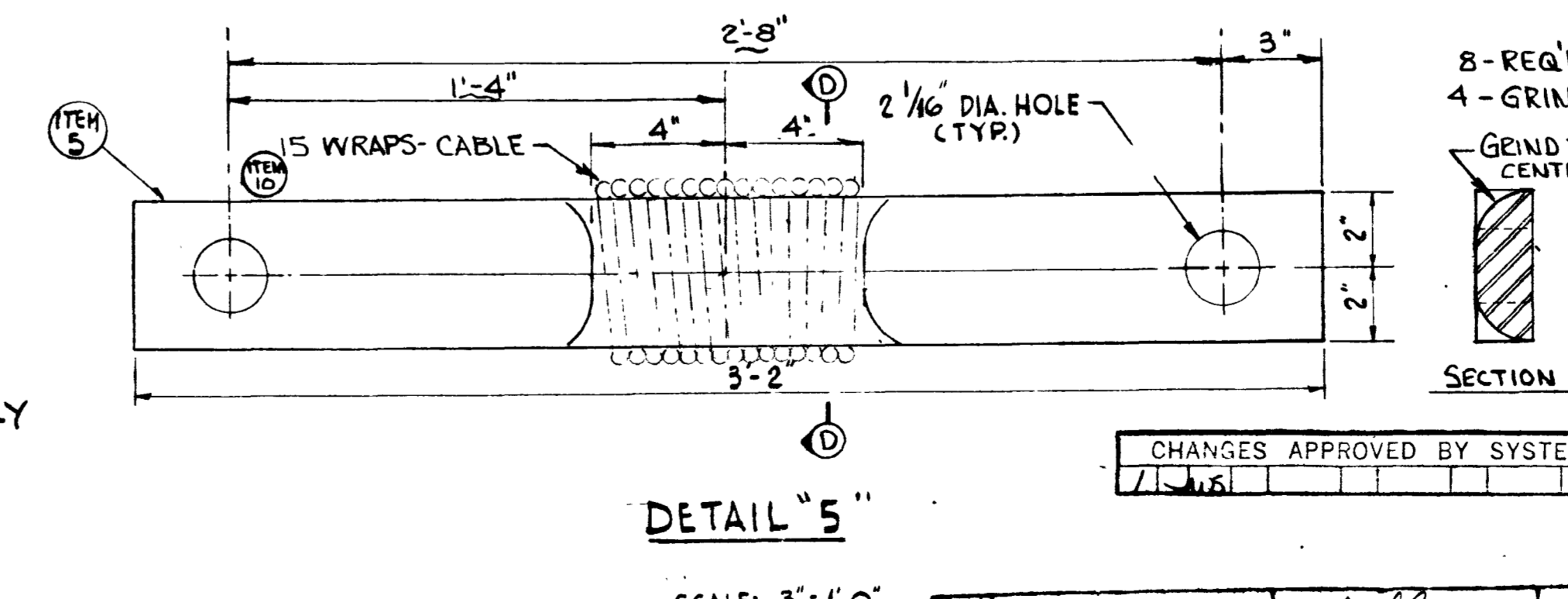
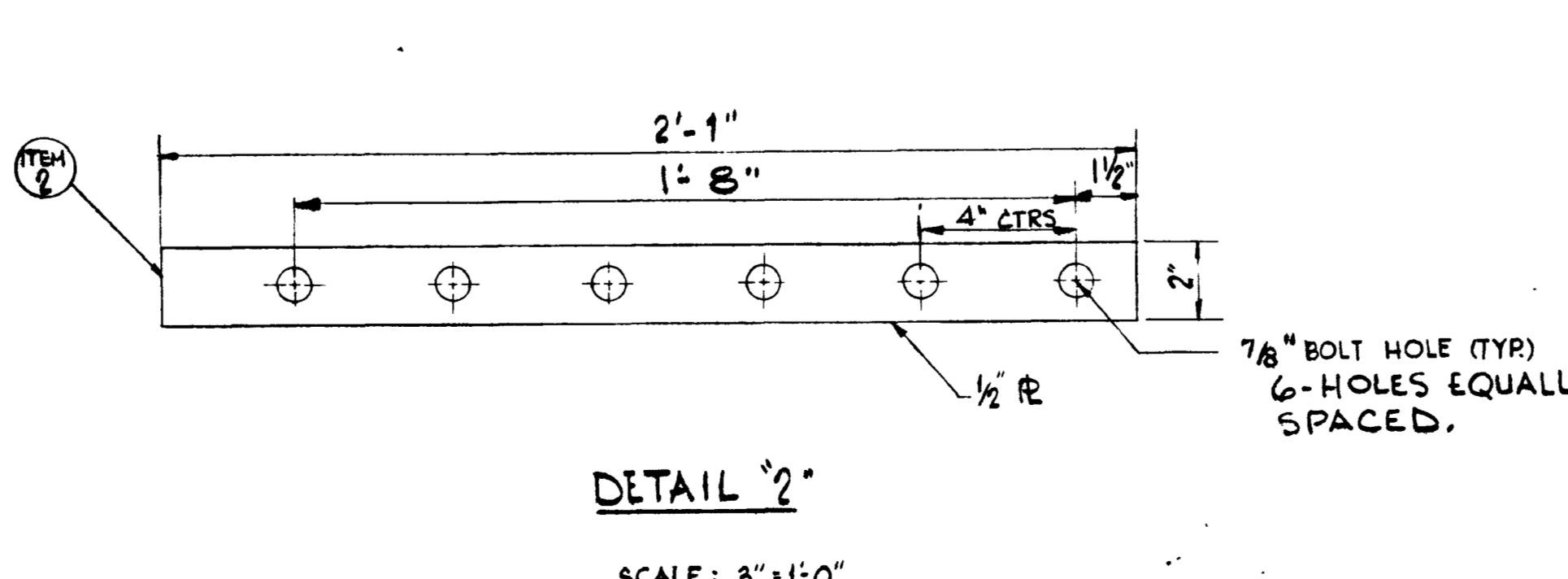
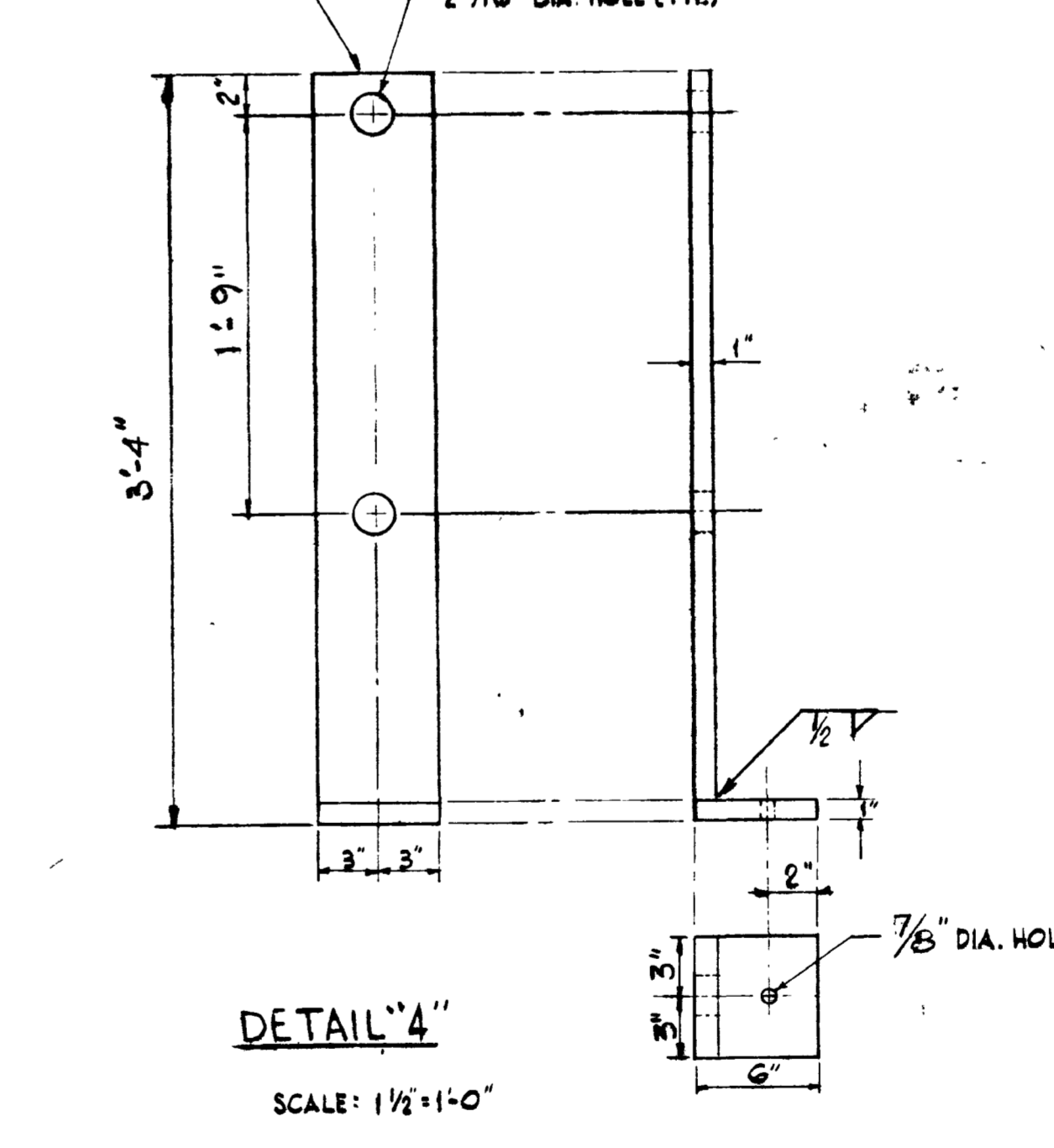
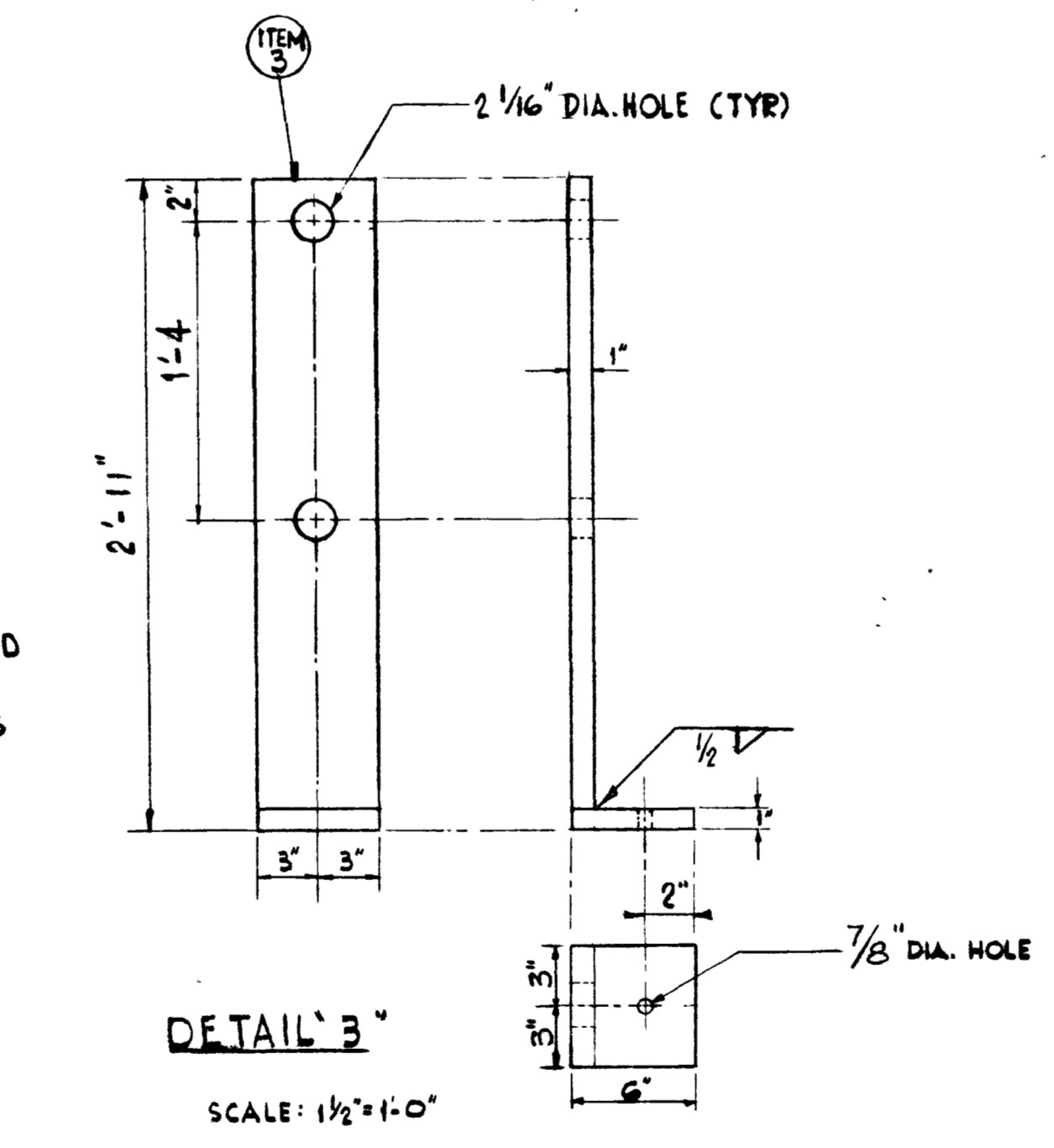
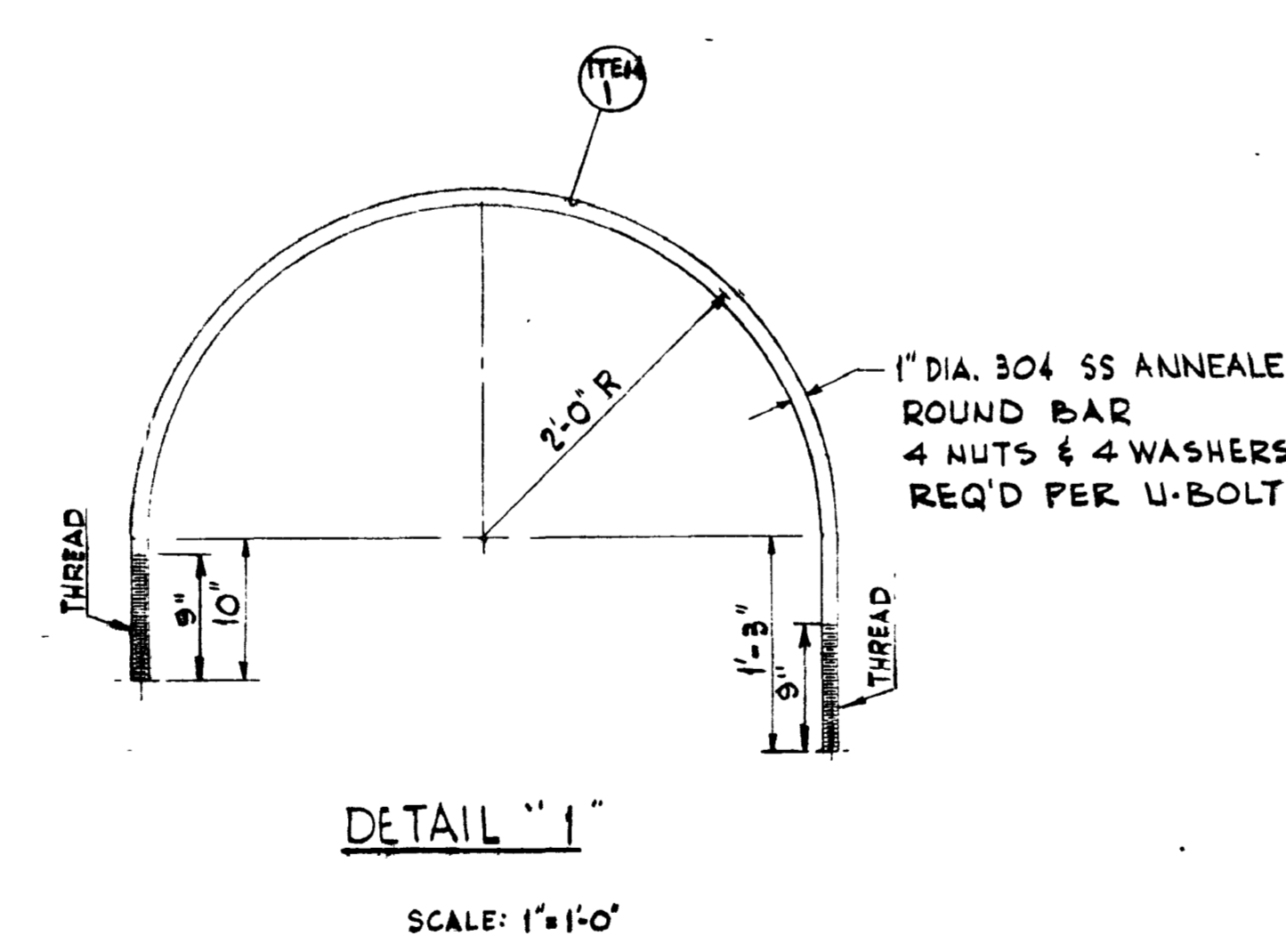
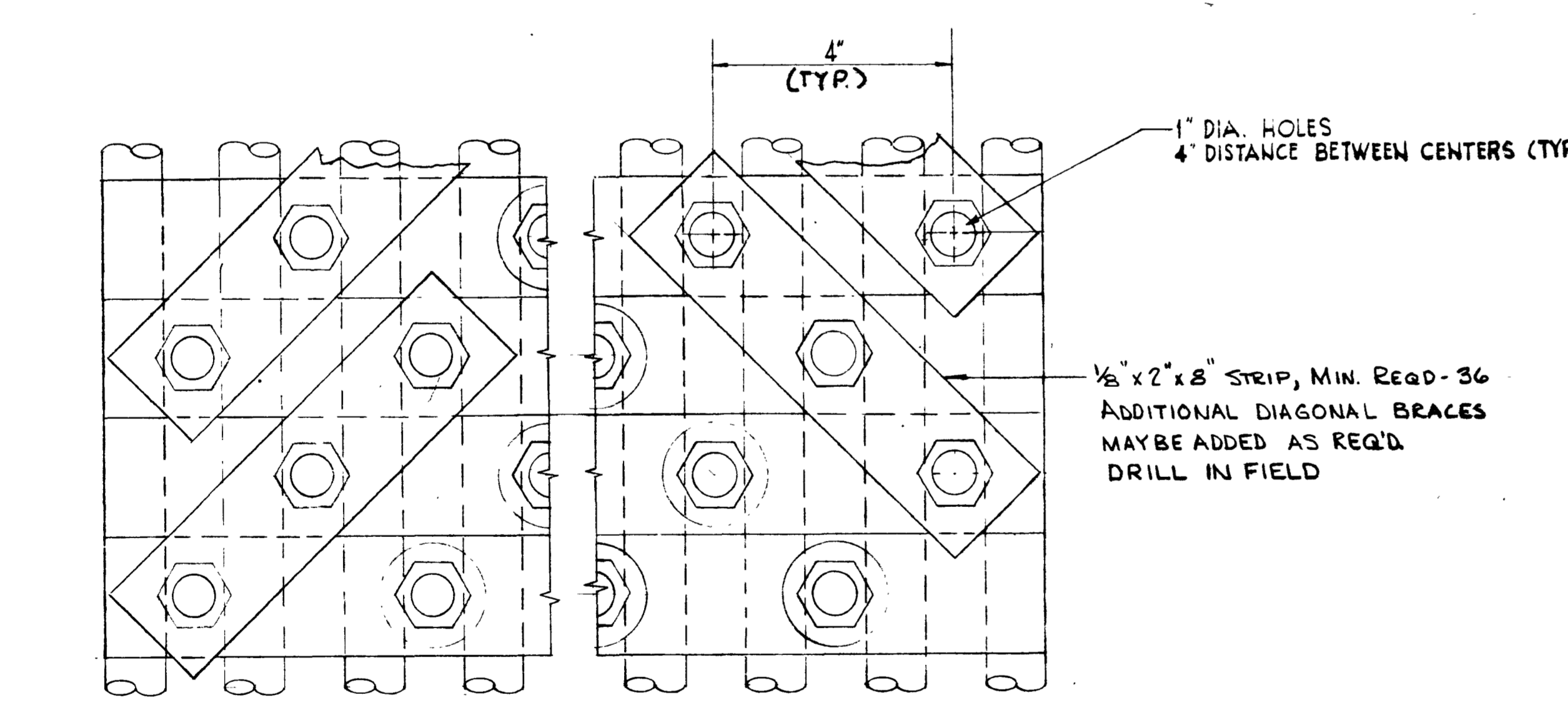
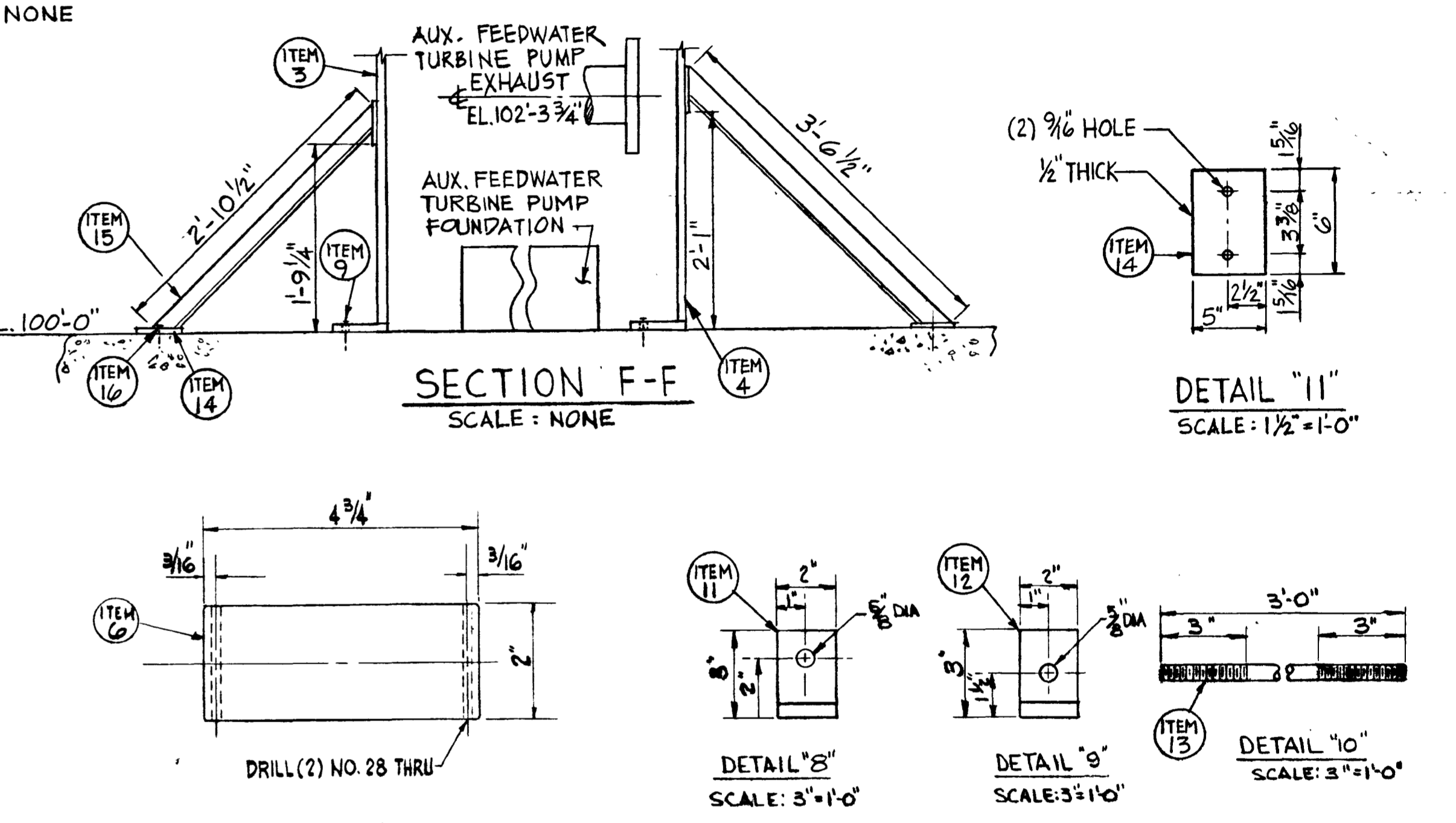
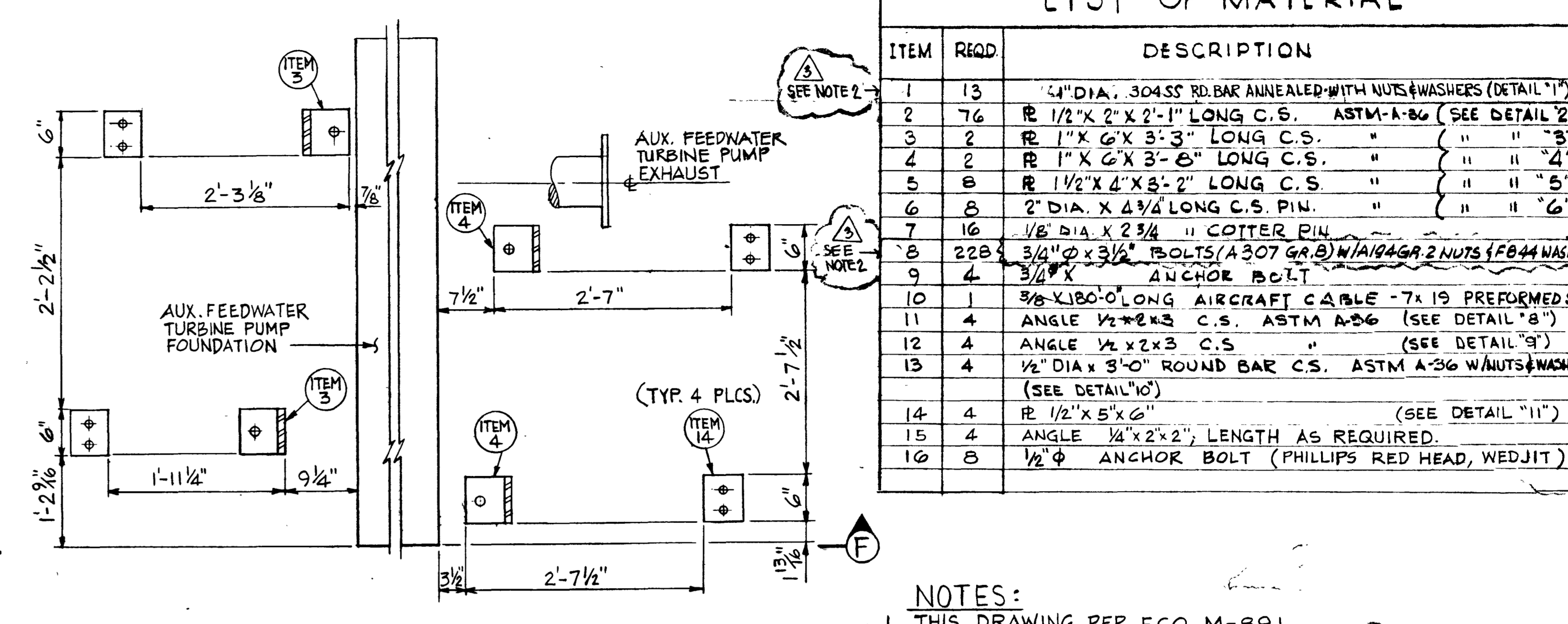
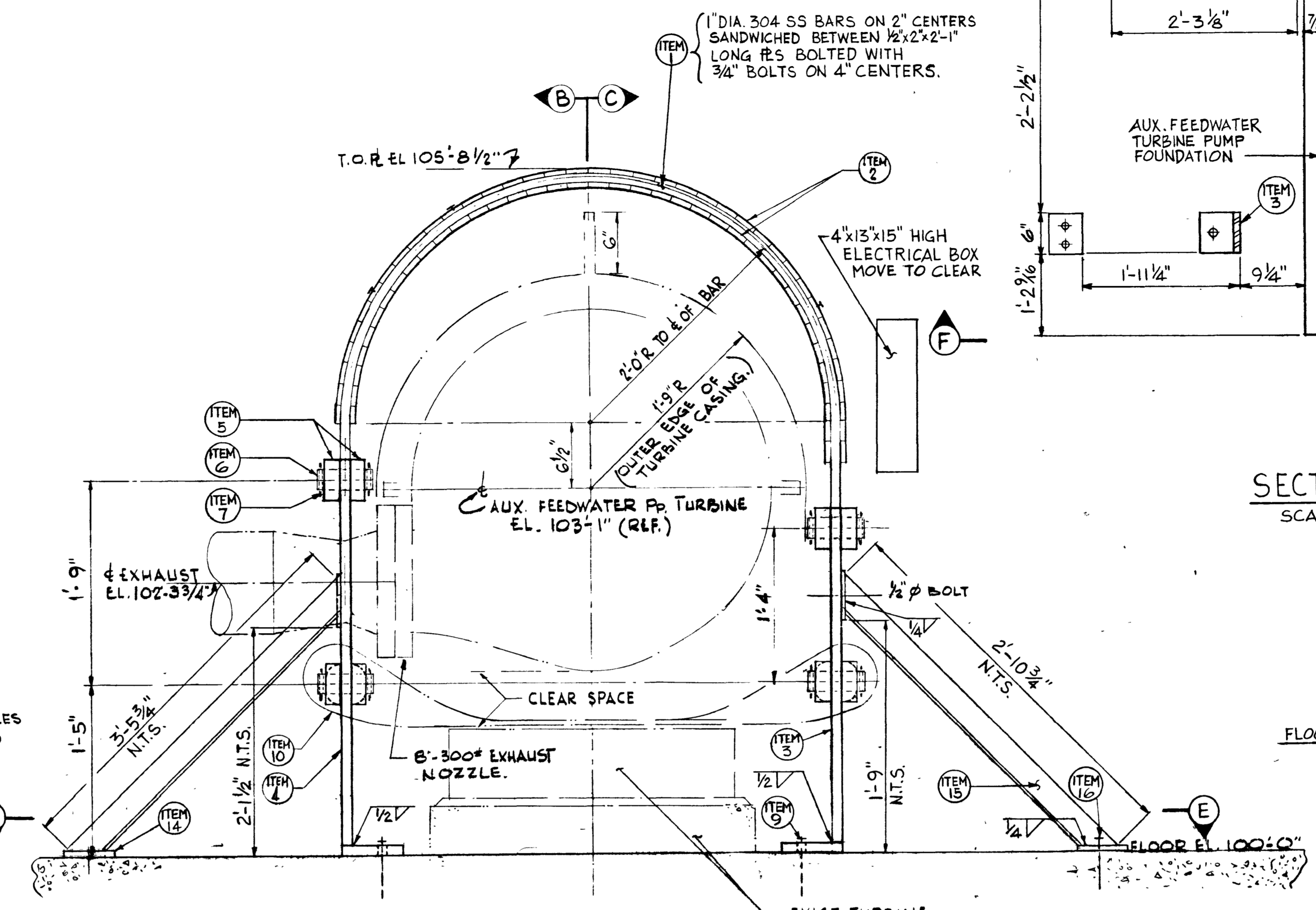
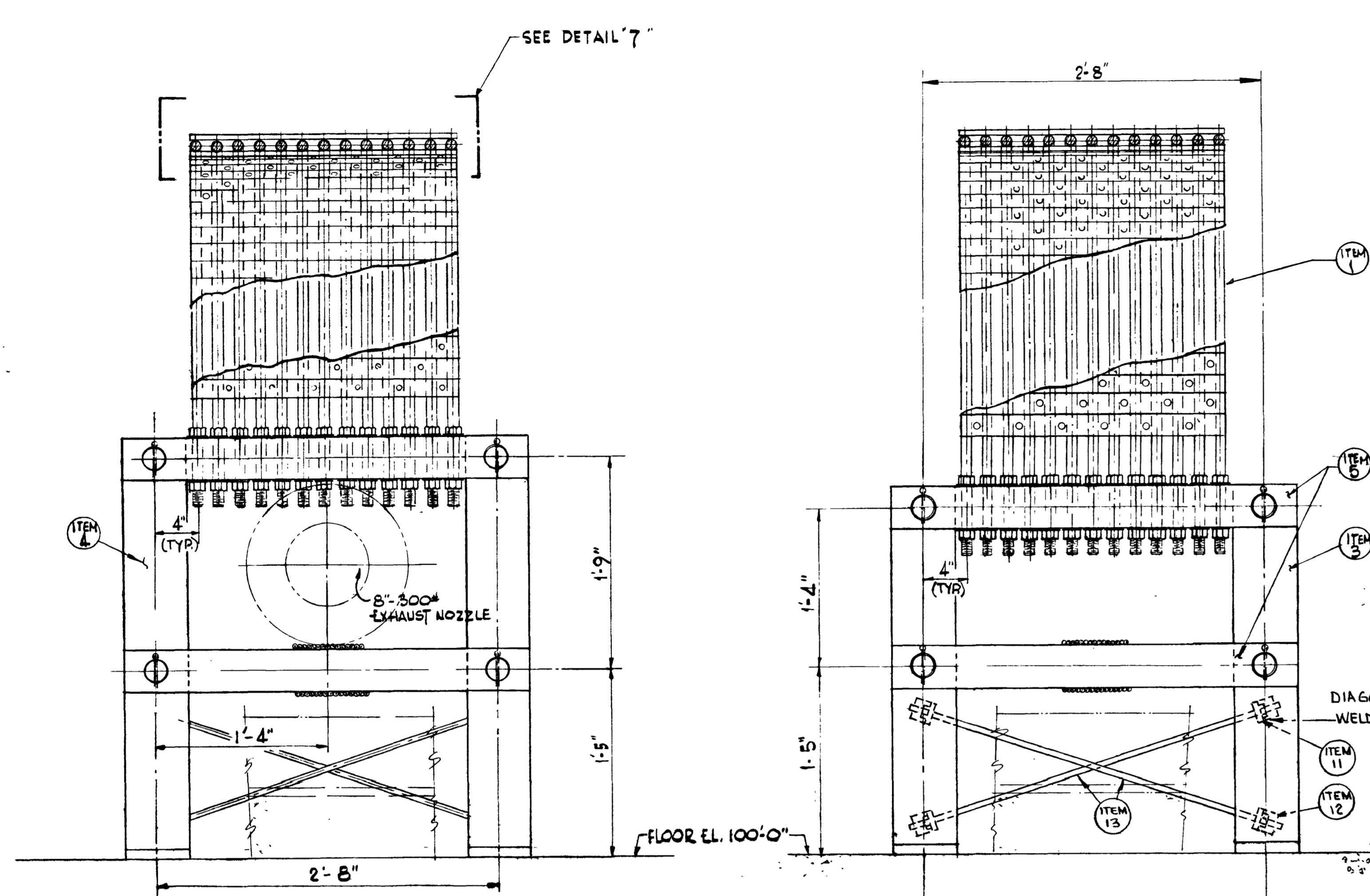


ITEM	REQD	DESCRIPTION
1	13	4" DIA. 304SS RD. BAR ANNEALED WITH NUTS & WASHERS (DETAIL 1)
2	76	R 1/2" X 2" X 2'-1" LONG C.S. ASTM A-86 (SEE DETAIL 2)
3	2	R 1" X 6" X 3'-3" LONG C.S. " " " " (3)
4	2	R 1" X 6" X 3'-6" LONG C.S. " " " " (4)
5	8	R 1 1/2" X 4" X 3'-2" LONG C.S. " " " " (5)
6	8	2" DIA. X 4 1/4" LONG C.S. PIN. " " " " (6)
7	16	1/8" DIA. X 2 3/4" COTTER PIN
8	228	3/4" X 3 1/2" BOLTS (A307 GR. B) N/A 469 2 NUTS (F844 WASHERS)
9	4	3/4" X ANCHOR BOLT
10	1	3/8" X 180'-0" LONG AIRCRAFT CABLE - 7 X 19 PREFORMED S.S.
11	4	ANGLE 1/2" X 2" X 3" C.S. ASTM A-86 (SEE DETAIL 8)
12	4	ANGLE 1/2" X 2" X 3" C.S. " " " " (SEE DETAIL 9)
13	4	1/2" DIA X 3'-0" ROUND BAR C.S. ASTM A-36 W/ NUTS & WASHERS (SEE DETAIL 10)
14	4	R 1/2" X 5" X 6" (SEE DETAIL 11)
15	4	ANGLE 1/2" X 2" X 2", LENGTH AS REQUIRED.
16	8	1/2" ANCHOR BOLT (PHILLIPS RED HEAD, WEDJIT)

NOTES:
 1. THIS DRAWING PER ECO M-891
 2. BOLTING TO BE TIGHTENED SNUG TIGHT.

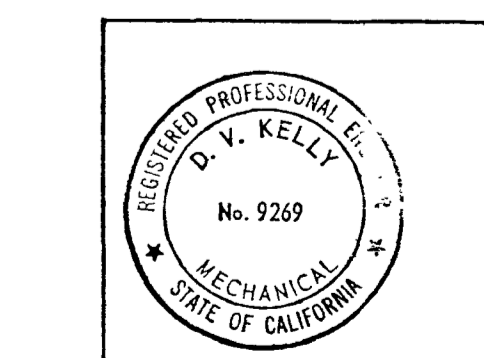


CHANGES APPROVED BY SYSTEMS ENGINEER

3 KELLY S. SMITH
REG. ENGINEER

CHANGES APPROVED BY SUPERVISING ENGINEER

RM INDEXED REV 2



NO.	DATE	DESCRIPTION	GM/SPEC	DWN.	CHKD.	SUPV.	APVD.	NO.	DATE	DESCRIPTION	GM/SPEC	DWN.	CHKD.	SUPV.	APVD.
1								1							
2	11-28-78	REVISED PER FCT NO 16928.						2	11-28-78	REVISED PER FCT 2877 & FCT 2879-D.					
3	1-4-79	ISSUE - APPROVED FOR CONSTRUCTION.						3	1-4-79	ISSUE - APPROVED FOR CONSTRUCTION.					

BILL OF MATERIAL
 DRAWING LIST
 SUPERSEDED BY
 SHEET NO. 505481
 SHEETS 3

PACIFIC GAS AND ELECTRIC COMPANY
 SAN FRANCISCO, CALIFORNIA