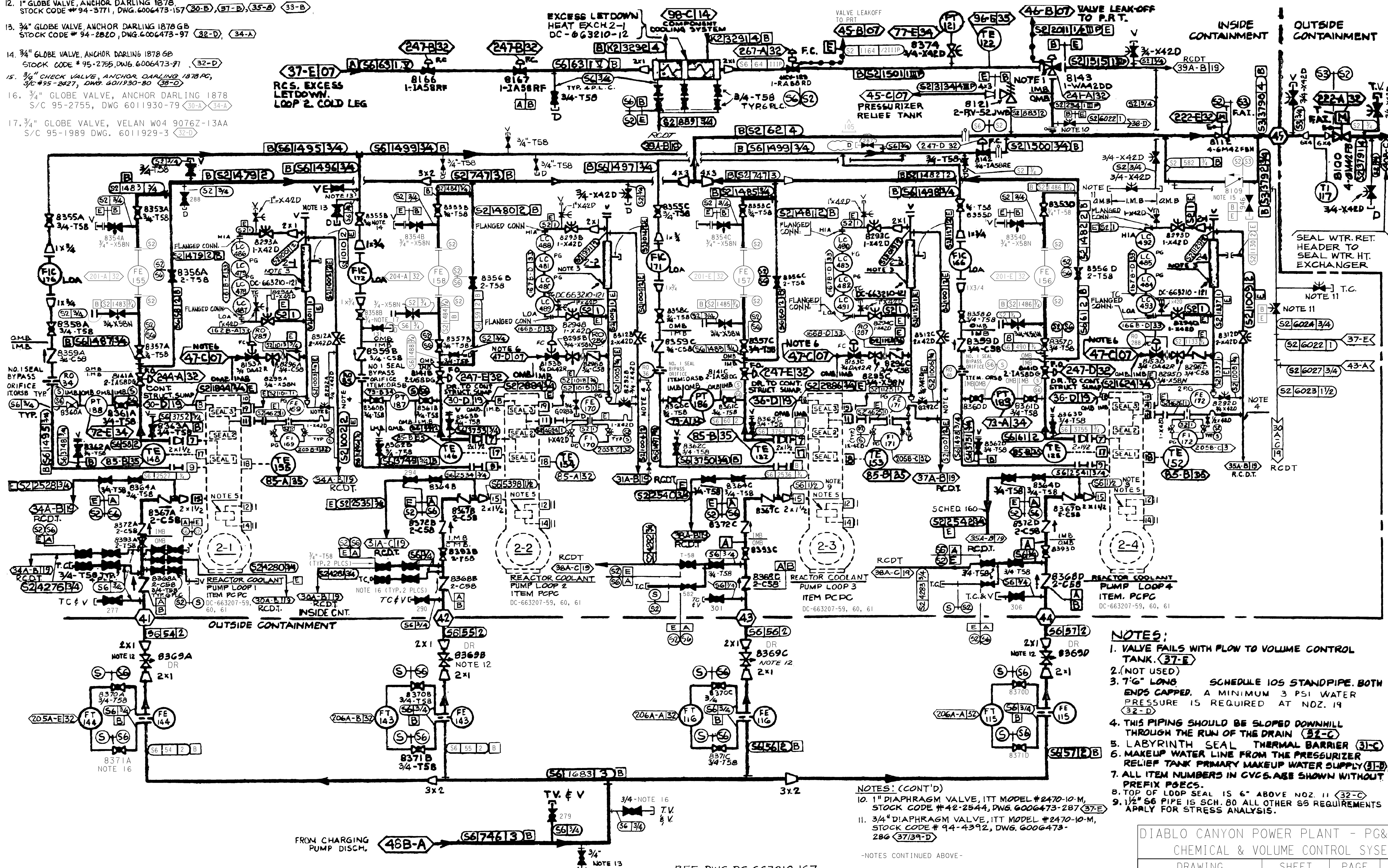


NOTES: (CONT'D)

- 12. 1" GLOBE VALVE, ANCHOR DARLING 1878, STOCK CODE # 94-3771, DWG. 6006473-157 (30-B), (37-B), (35-B) (33-B)
- 13. 3/4" GLOBE VALVE, ANCHOR DARLING 1878 GB, STOCK CODE # 94-2820, DWG. 6006473-97 (32-D), (34-A)
- 14. 3/4" GLOBE VALVE, ANCHOR DARLING 1878 6D, STOCK CODE # 95-2755, DWG. 6006473-91 (32-D)
- 15. 3/4" CHECK VALVE, ANCHOR DARLING 1878 PC, S/C # 95-2427, DWG. 6011930-80 (35-D)
- 16. 3/4" GLOBE VALVE, ANCHOR DARLING 1878, S/C 95-2755, DWG. 6011930-79 (30-A), (34-A)
- 17. 3/4" GLOBE VALVE, VELAN W04 9076Z-13AA, S/C 95-1989, DWG. 6011929-3 (32-D)



- NOTES:**
1. VALVE FAILS WITH FLOW TO VOLUME CONTROL TANK. (37-E)
 2. (NOT USED)
 3. 7'-6" LONG SCHEDULE 10S STANDPIPE. BOTH ENDS CAPPED. A MINIMUM 3 PSI WATER PRESSURE IS REQUIRED AT NOZ. 19 (32-D)
 4. THIS PIPING SHOULD BE SLOPED DOWNHILL THROUGH THE RUN OF THE DRAIN (32-C)
 5. LABYRINTH SEAL THERMAL BARRIER (31-C)
 6. MAKEUP WATER LINE FROM THE PRESSURIZER RELIEF TANK PRIMARY MAKEUP WATER SUPPLY (31-B)
 7. ALL ITEM NUMBERS IN CYCS ARE SHOWN WITHOUT PREFIX P0ECS.
 8. TOP OF LOOP SEAL IS 6" ABOVE NOZ. 11 (32-C)
 9. 1 1/2" S6 PIPE IS SCH. 80 ALL OTHER S6 REQUIREMENTS APPLY FOR STRESS ANALYSIS.

NOTES: (CONT'D)

10. 1" DIAPHRAGM VALVE, ITT MODEL #2470-10-M, STOCK CODE # 42-2544, DWG. 6006473-287 (37-E)
11. 3/4" DIAPHRAGM VALVE, ITT MODEL #2470-10-M, STOCK CODE # 94-4392, DWG. 6006473-286 (37/39-D)

-NOTES CONTINUED ABOVE-

REF. DWG. DC-663210-167

DIABLO CANYON POWER PLANT - PG&E CO.			
CHEMICAL & VOLUME CONTROL SYSTEM			
DRAWING	SHEET	PAGE	REV
108008	3	0	105

RASTER=001.FI143.dgn
 DGN=001.FI143.dgn
 CAD User: ZNS4 D07e: 02-24-2015