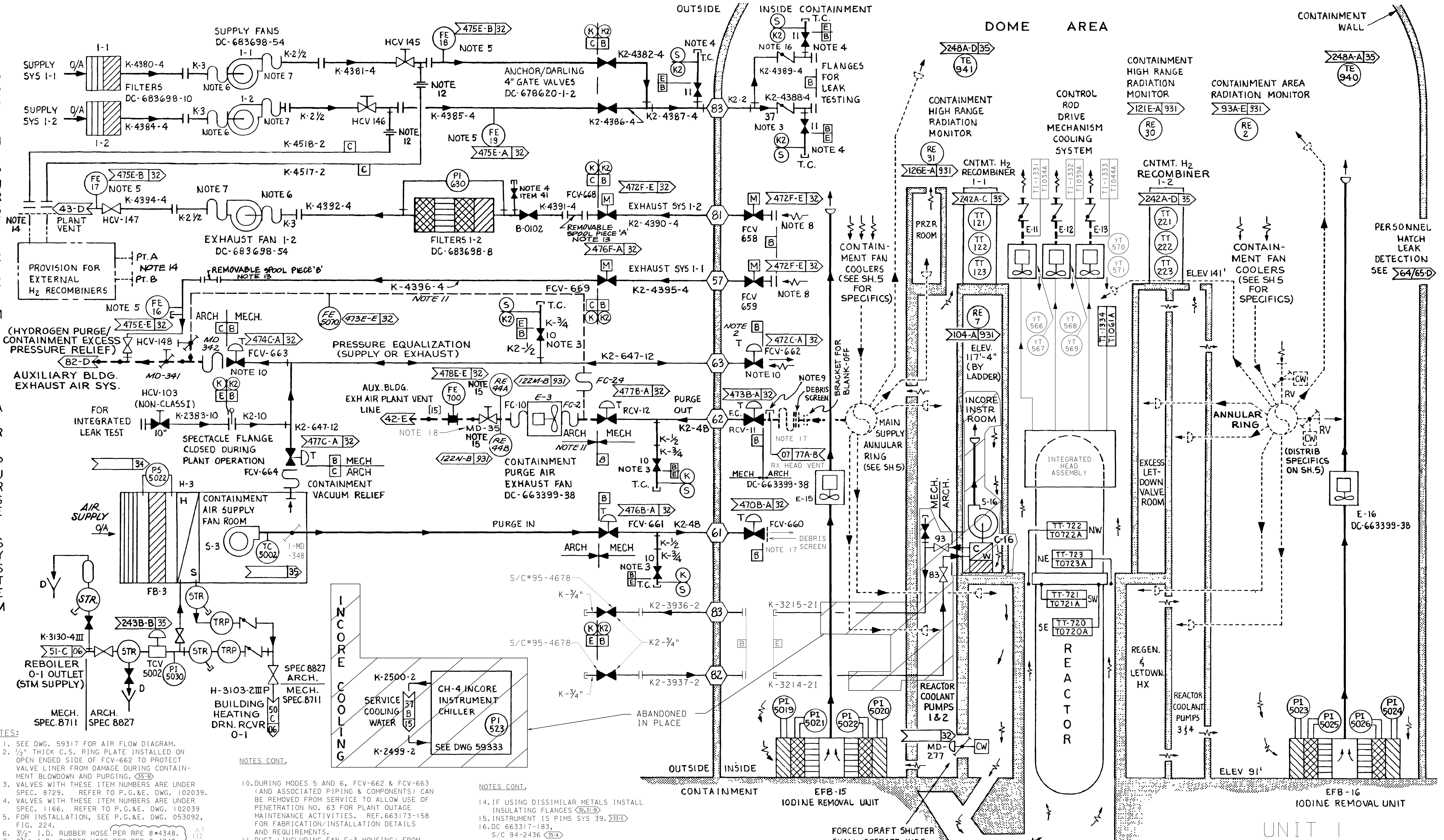


A  
B  
C  
D

A  
B  
C  
D



- NOTES:
- SEE DWG. 59317 FOR AIR FLOW DIAGRAM.
  - 1/2" THICK C.S. RING PLATE INSTALLED ON OPEN ENDED SIDE OF FCV-662 TO PROTECT VALVE LINER FROM DAMAGE DURING CONTAINMENT BLOWDOWN AND PURGING. (35-B)
  - VALVES WITH THESE ITEM NUMBERS ARE UNDER SPEC. 8729. REFER TO P.G.&E. DWG. 102039.
  - VALVES WITH THESE ITEM NUMBERS ARE UNDER SPEC. 1166. REFER TO P.G.&E. DWG. 102039.
  - FOR INSTALLATION, SEE P.G.&E. DWG. 053092, FIG. 224.
  - 3/2" I.D. RUBBER HOSE PER RPE 8\*4348.
  - 2 3/4" I.D. RUBBER HOSE PER RPE 8\*4348.
  - FLANGE WITH PROVISION FOR LEAK RATE TEST OF ISOLATION VALVE SHALL BE REMOVABLE & READILY AVAILABLE FOR PERIODIC TESTS. FLANGES UPSTREAM OF FCV-658/659 TO BE 150" RATING PER "K" SPEC.
  - (6)-5" PORTS WITH COVERPLATES USED FOR VENTING GASES DURING OUTAGES POSITIONED RADIALLY ON 48" Ø DUCT; FOR DETAIL SEE DWG. 59453.

- NOTES CONT.
- DURING MODES 5 AND 6, FCV-662 & FCV-663 (AND ASSOCIATED PIPING & COMPONENTS) CAN BE REMOVED FROM SERVICE TO ALLOW USE OF PENETRATION NO. 63 FOR PLANT OUTAGE MAINTENANCE ACTIVITIES. REF. 663173-158 FOR FABRICATION/INSTALLATION DETAILS AND REQUIREMENTS.
  - DUCT (INCLUDING FAN E-3 HOUSING) FROM RCV-12 TO MD-35 AND TO MD-342 IS DESIGN CLASS II, SEISMIC CATEGORY I.
  - SYMBOL INDICATES BLANKED FLANGE, REMOVE OBSTRUCTION WHEN RECOMBINER IS CONNECTED TO OUTLET LINES (23-33).
  - REMOVABLE SPOOL PIECES 'A' AND 'B' ALLOW FOR CONNECTION OF CONTAINMENT EXHAUST PIPING TO POINTS 'A' AND 'B' OF PORTABLE EXTERNAL HYDROGEN RECOMBINERS. (31-B)

- NOTES CONT.
- IF USING DISSIMILAR METALS INSTALL INSULATING FLANGES (30,31-B)
  - INSTRUMENT IS PIMS SYS 39. (33-C)
  - DC 663317-183, S/C 94-2436 (35-A)
  - DEBRIS SCREENS FOR VALVES FCV-660 AND RCV-11 ARE DESIGN CLASS I. DUCTING AND FLEXIBLE CONNECTION BETWEEN DEBRIS SCREEN AND VALVE RCV-11 ARE DESIGN CLASS I.
  - DAMPER MD-35 IS DESIGN CLASS I AND IS THE BOUNDARY BETWEEN THE PLANT VENT AND THE PURGE DUCTWORK.

FORCED DRAFT SHUTTER SHALL OPERATE INDEPENDENTLY AS A BAROMETRIC DAMPER

CONTAINMENT ATMOSPHERE VENTILATION AND A/C PENETRATIONS

DIABLO CANYON POWER PLANT - PG&E CO.  
VENTILATION & AIR CONDITIONING SYSTEMS

DRAWING	SHEET	PAGE	REV
102023	3	0	112