

60A

61A

62A

63A

64A

65A

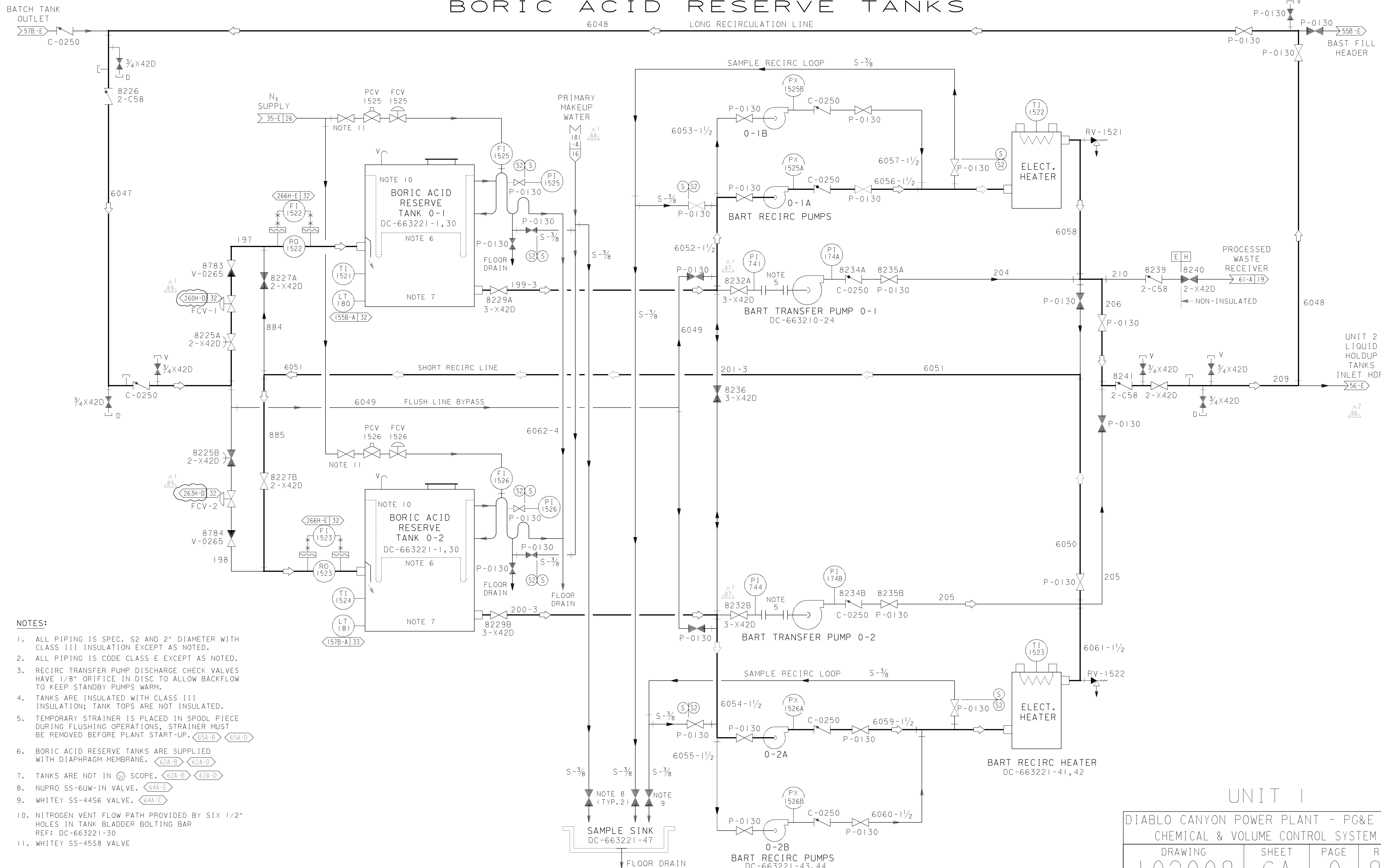
66A

67A

68A

69A

BORIC ACID RESERVE TANKS



NOTES:

1. ALL PIPING IS SPEC. S2 AND 2" DIAMETER WITH CLASS III INSULATION EXCEPT AS NOTED.
2. ALL PIPING IS CODE CLASS E EXCEPT AS NOTED.
3. RECIRC TRANSFER PUMP DISCHARGE CHECK VALVES HAVE 1/8" ORIFICE IN DISC TO ALLOW BACKFLOW TO KEEP STANDBY PUMPS WARM.
4. TANKS ARE INSULATED WITH CLASS III INSULATION; TANK TOPS ARE NOT INSULATED.
5. TEMPORARY STRAINER IS PLACED IN SPOOL PIECE DURING FLUSHING OPERATIONS, STRAINER MUST BE REMOVED BEFORE PLANT START-UP.
6. BORIC ACID RESERVE TANKS ARE SUPPLIED WITH DIAPHRAGM MEMBRANE.
7. TANKS ARE NOT IN SCOPE.
8. NUPRO SS-6UW-IN VALVE.
9. WHITEY SS-44S6 VALVE.
10. NITROGEN VENT FLOW PATH PROVIDED BY SIX 1/2" HOLES IN TANK BLADDER BOLTING BAR REF: DC-663221-30
11. WHITEY SS-45S8 VALVE

UNIT I

DIABLO CANYON POWER PLANT - PG&E CO.
CHEMICAL & VOLUME CONTROL SYSTEM

DRAWING	SHEET	PAGE	REV
102008	6A	0	89

08-10-2011	AJFJ	FAZI	KERSI J. DALAL	MECHANICAL	M 16690	3/31/2012	REVISED PER DAS-6*423
DATE	DWN	RE	IV	PROFESSIONAL ENGINEER	PE DISC.	PE#	PE EXP.

RASTER=200836A.DGN
 DGN=200836A.DGN
 CAD User: AJFJ Date: 08-10-2011