

A

B

C

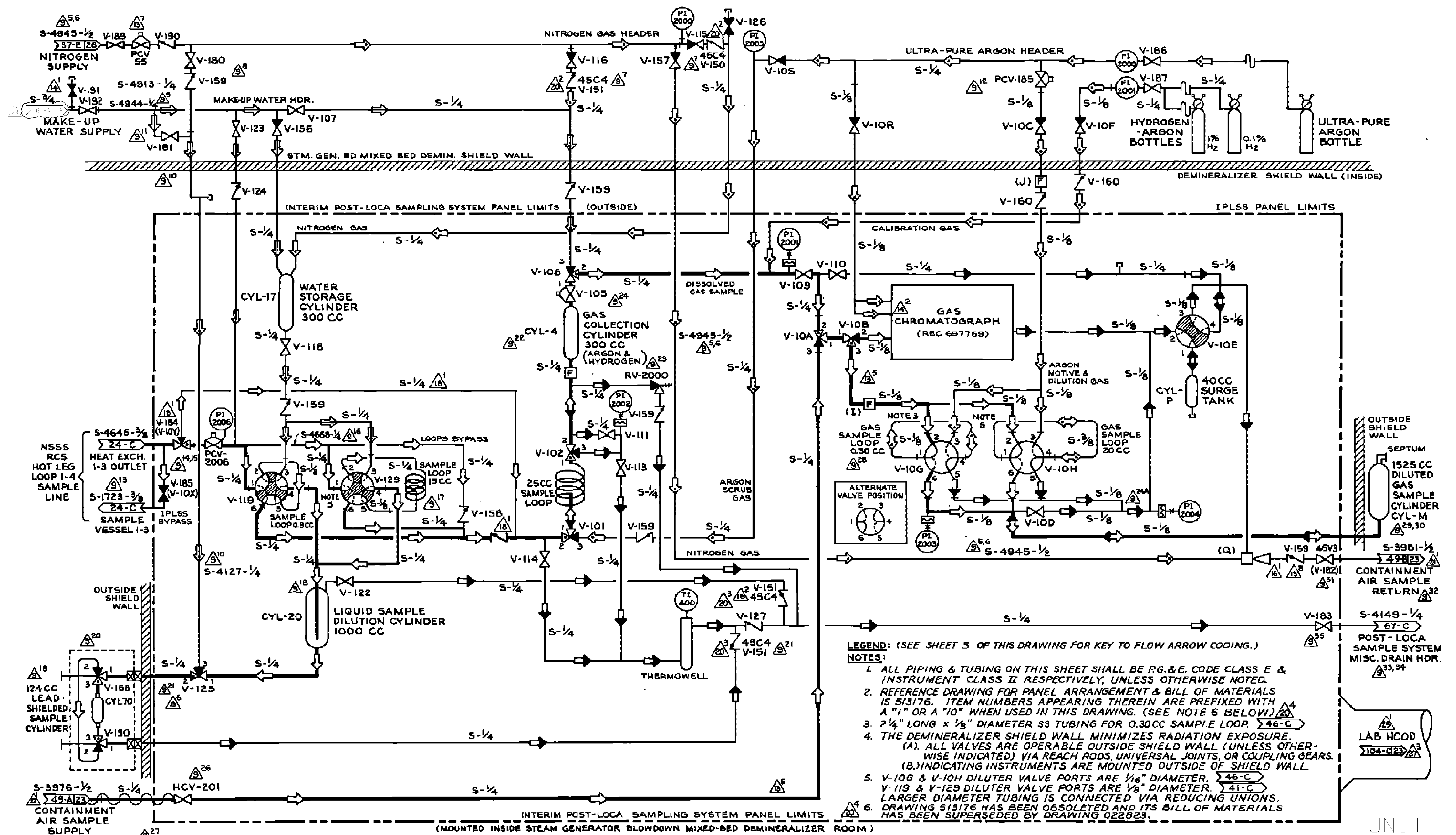
D

A

B

C

D



**LEGEND:** (SEE SHEET 5 OF THIS DRAWING FOR KEY TO FLOW ARROW CODING.)

- NOTES:**
1. ALL PIPING & TUBING ON THIS SHEET SHALL BE P.G.&E. CODE CLASS E & INSTRUMENT CLASS II RESPECTIVELY, UNLESS OTHERWISE NOTED.
  2. REFERENCE DRAWING FOR PANEL ARRANGEMENT & BILL OF MATERIALS IS 513176. ITEM NUMBERS APPEARING THEREIN ARE PREFIXED WITH A "1" OR A "10" WHEN USED IN THIS DRAWING. (SEE NOTE 6 BELOW)
  3. 2 1/4" LONG x 1/8" DIAMETER SS TUBING FOR 0.30CC SAMPLE LOOP.  $\Delta 46-C$
  4. THE DEMINERALIZER SHIELD WALL MINIMIZES RADIATION EXPOSURE. (A.) ALL VALVES ARE OPERABLE OUTSIDE SHIELD WALL (UNLESS OTHERWISE INDICATED) VIA REACH RODS, UNIVERSAL JOINTS, OR COUPLING GEARS. (B.) INDICATING INSTRUMENTS ARE MOUNTED OUTSIDE OF SHIELD WALL.
  5. V-106 & V-108 DILUTER VALVE PORTS ARE 1/16" DIAMETER.  $\Delta 46-C$   
V-119 & V-129 DILUTER VALVE PORTS ARE 1/8" DIAMETER.  $\Delta 41-C$   
LARGER DIAMETER TUBING IS CONNECTED VIA REDUCING UNIONS.
  6. DRAWING 513176 HAS BEEN OBSOLETE AND ITS BILL OF MATERIALS HAS BEEN SUPERSEDED BY DRAWING 022923.

INTERIM POST-LOCA SAMPLING SYSTEM PANEL LIMITS (MOUNTED INSIDE STEAM GENERATOR BLOWDOWN MIXED-BED DEMINERALIZER ROOM)

UNIT 1

DIABLO CANYON POWER PLANT - PG&E CO.			
DRAWING	SHEET	PAGE	REV
102011	4	0	28

01-24-2006	MIBF	RHSI	FRANCIS C. LING	MECHANICAL	M 16098	12/31/2007	REVISED PER FCT-030760
DATE	DWN	RE	PROFESSIONAL ENGINEER	PE DISC.	PE*	PE EXP.	

RASTER=2011s4.dgn  
 DGN=2011s4.dgn  
 CAD User: MIBF Date: 01-24-2006