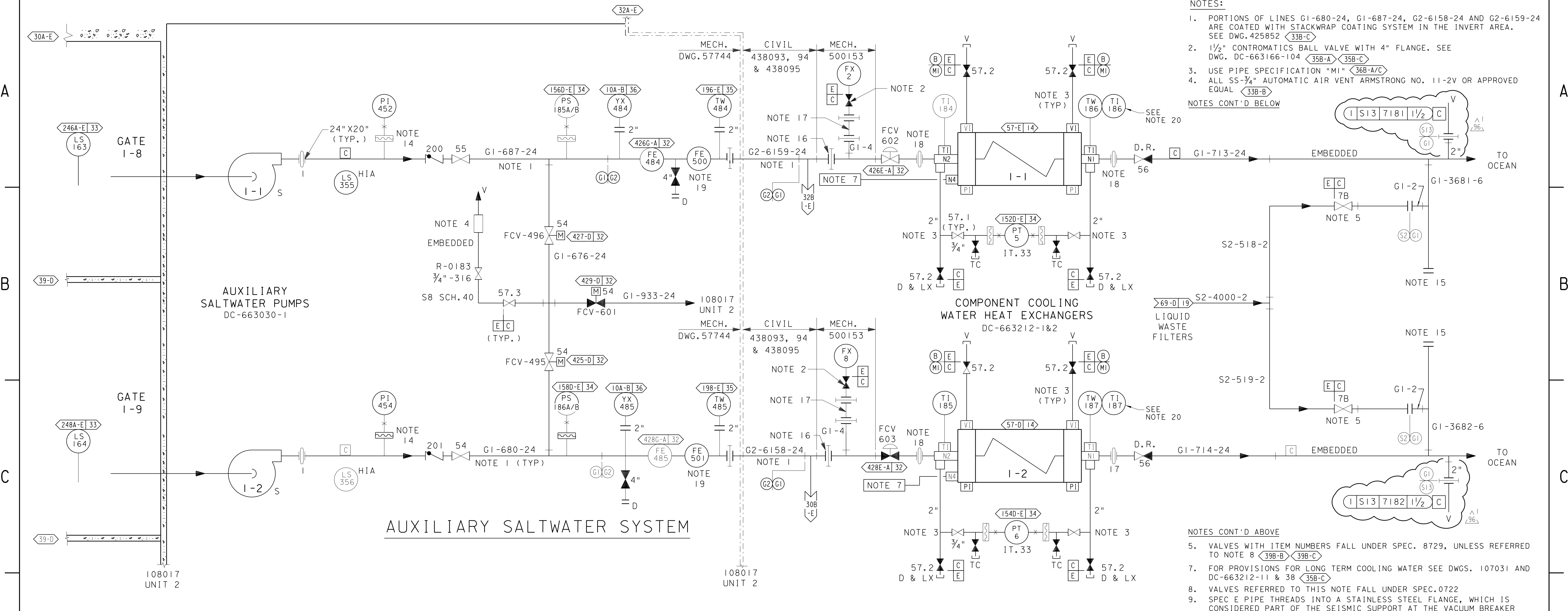
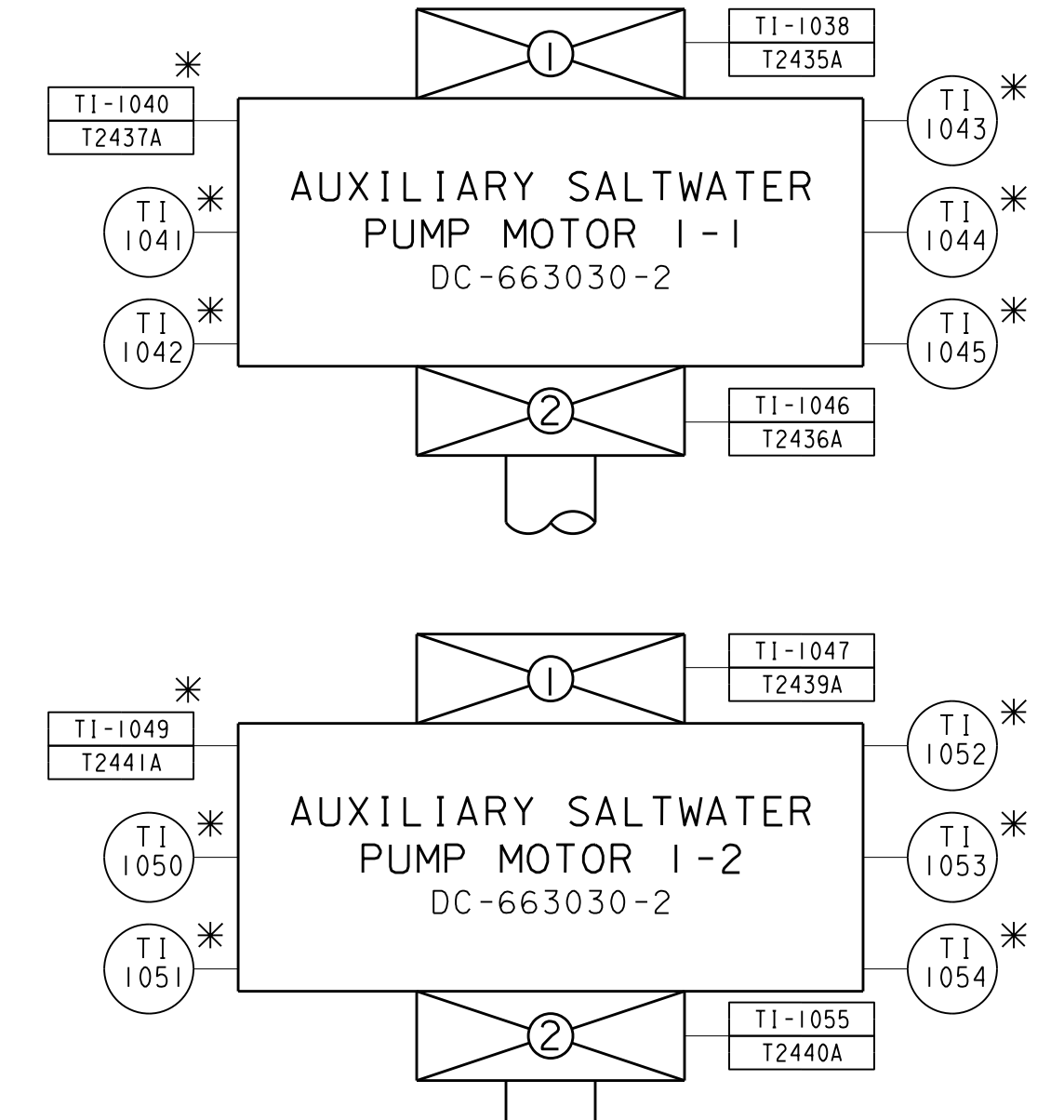
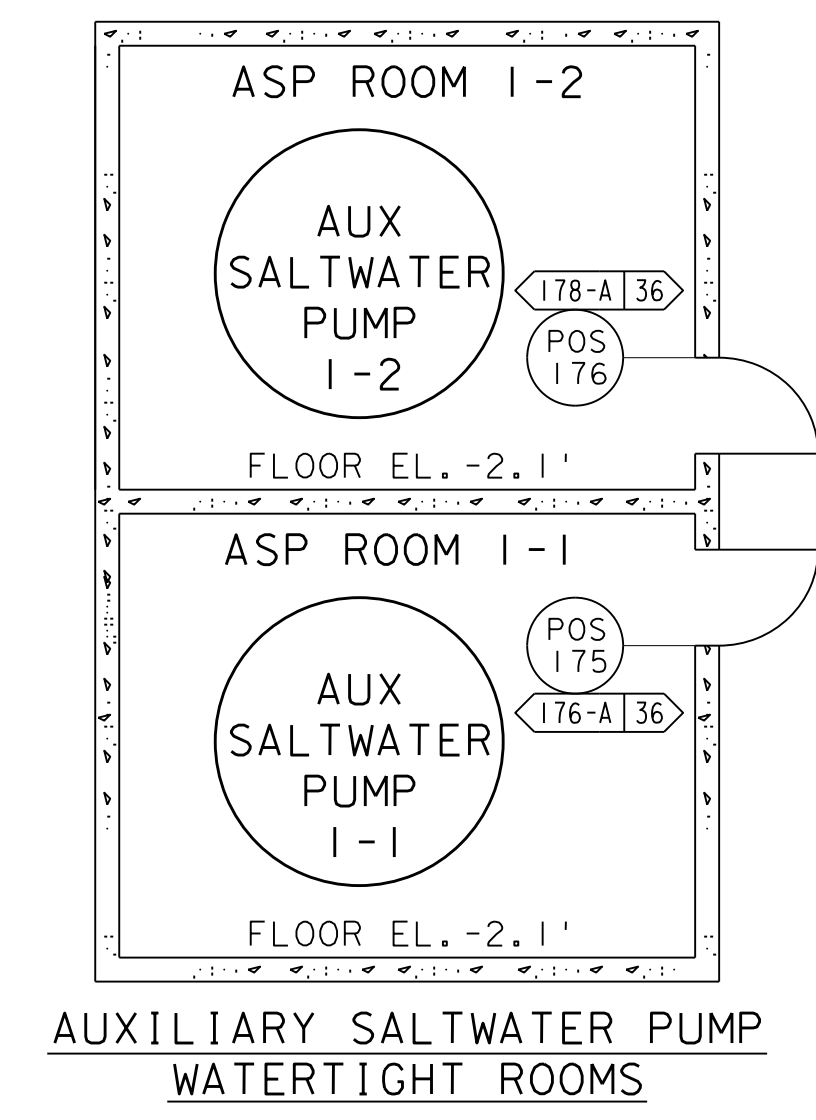
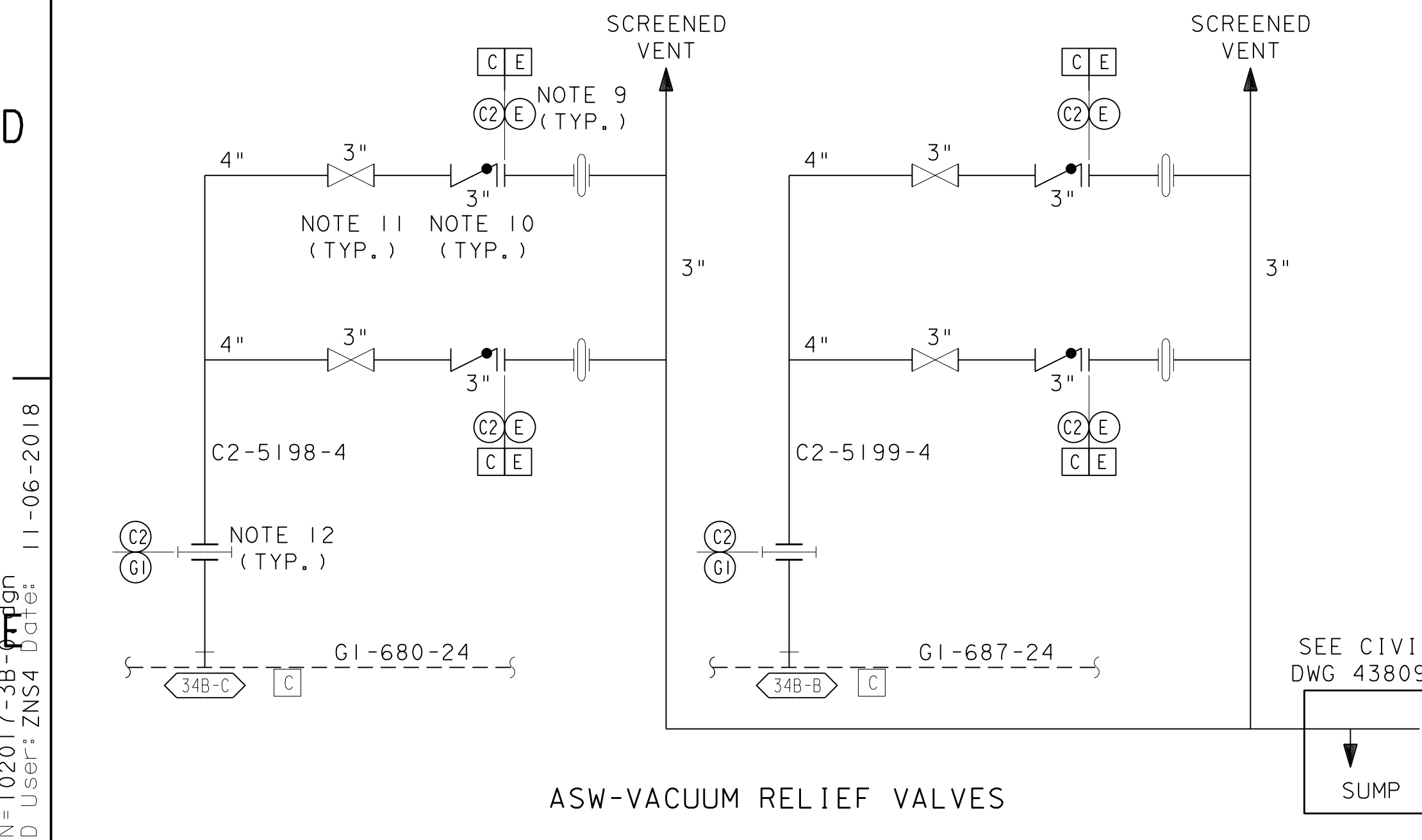


- NOTES:
- PORTIONS OF LINES GI-680-24, GI-687-24, G2-6158-24 AND G2-6159-24 ARE COATED WITH STACKWRAP COATING SYSTEM IN THE INVERT AREA. SEE DWG. 425852 (33B-C)
 - 1 1/2" CONTROMATICS BALL VALVE WITH 4" FLANGE. SEE DWG. DC-663166-104 (35B-A) (35B-C)
 - USE PIPE SPECIFICATION "MI" (36B-A/C)
 - ALL SS-3/4" AUTOMATIC AIR VENT ARMSTRONG NO. 11-2V OR APPROVED EQUAL (33B-B)
- NOTES CONT'D BELOW



- NOTES CONT'D ABOVE
- VALVES WITH ITEM NUMBERS FALL UNDER SPEC. 8729, UNLESS REFERRED TO NOTE 8 (39B-B) (39B-C)
 - FOR PROVISIONS FOR LONG TERM COOLING WATER SEE DWGS. 107031 AND DC-663212-11 & 38 (35B-C)
 - VALVES REFERRED TO THIS NOTE FALL UNDER SPEC. 0722
 - SPEC E PIPE THREADS INTO A STAINLESS STEEL FLANGE, WHICH IS CONSIDERED PART OF THE SEISMIC SUPPORT AT THE VACUUM BREAKER INLET (31B-D)
 - FOR 3"-150# FLANGED ENDS ALUMINUM BRONZE SWING CHECK VALVE WITH VACUUM BREAKER SEE DC-663313-47 AND DC-663313-57. (31B-D)
 - FOR 3"-150# FLANGED ENDS ALUMINUM BRONZE FLEX WEDGE GATE VALVE WITH 10" DIA. HANDWHEEL SEE DC-663313-48 (30B-D)
 - FLAT FACE FLANGES ON LINES 5198 & 5199 TO HAVE RUBBER GASKETS ONLY (ALL PLACES) (30B-E)
 - ALL PIPES ON THIS SHEET ARE PG&E CLASS "C" UNLESS OTHERWISE NOTED
 - REFER TO PG&E DRAWING 053094 SH.6 FOR DETAILS ON INSULATING (DIELECTRIC) FLANGE ASSEMBLY INSTALLATION AT THESE LOCATIONS (32B-A) (32B-C)
 - BLIND FLANGE WITH FITTINGS SUITABLE FOR RTD TEST PROBE INSERTION (39B-B)
 - 24" DIELECTRIC 150# INSULATION KIT (STOCK CODE #95-0523) EXCEPT EXISTING FLANGE GASKET RETAINED (35B-A) (35B-C)
 - PIPE SB/B-675 STOCK CODE #95-0171, FLANGE SB/B-462 STOCK CODE #95-0170 (35B-A) (35B-C)
 - GARLOCK STYLE 204 HP, S/C 94-5753, SEE DC 663323-14 (35B-A) (37B-A)
 - FE-500 AND FE-501 ARE ULTRASONIC FLOWMETERS THAT HAVE BEEN STRAPPED ONTO THE OUTSIDE OF THE ASW PIPES. (34B-A) (34B-C)



UNIT I

DIABLO CANYON POWER PLANT - PG&E CO.

SALTWATER SYSTEM

DRAWING	SHEET	PAGE	REV
102017	3B	0	96

20. TI-186 & TI-187 CAN BE REMOVED TEMPORARILY & RTD'S CAN BE INSTALLED FOR TESTING.

RASTER=102017-3B-0.dgn
 DGN=102017-3B-0.dgn
 CAD User: ZNS4 Date: 11-06-2018

11-06-2018	ZNS4	FXC2	N/A	NOT REQUIRED PER CF3.1D5	-	-	-	Revised Per DDN-2*1675
DATE	DWN	RE	IV	PROFESSIONAL ENGINEER	PE DISC.	PE#	PE EXP.	