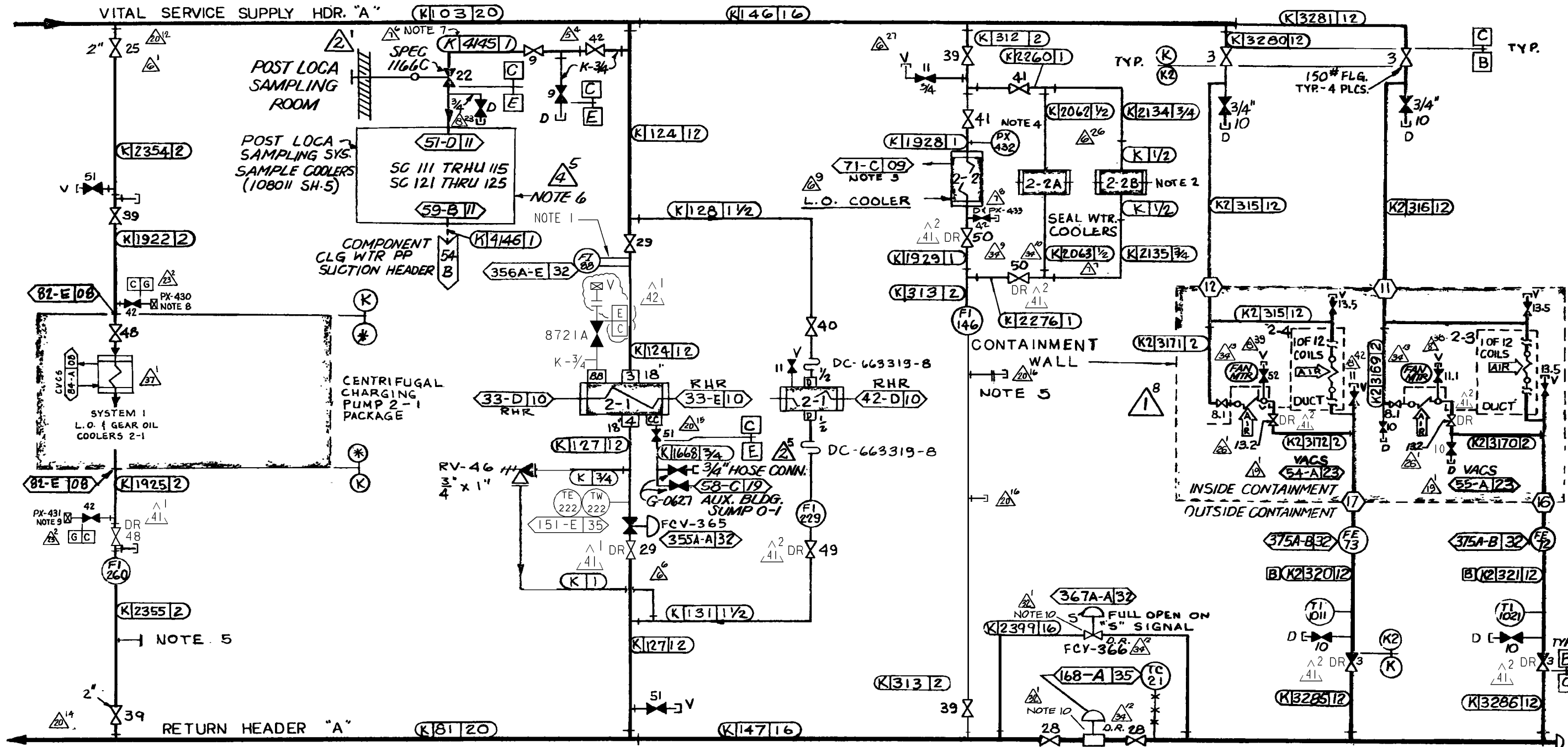


NOTES CONT: 8. DRAIN W/ QUICK-DISCONNECT COUPLING W/ INTEGRAL CHECK VALVE FOR EMERGENCY TIE-IN TO FIRE PROTECTION SYSTEM (108018-5A). COUPLING TO BE REMOVED WHEN DRAINING IS REQUIRED.
 9. DRAIN W/ QUICK-DISCONNECT COUPLING W/ INTEGRAL CHECK VALVE. DRAIN HOSE TO BE ATTACHED FOR ROUTING FLOW TO FLOOR DRAINS WHEN FPS TIE-IN (NOTE 8) IS OPERATIONAL. COUPLING TO BE REMOVED WHEN DRAINING IS REQUIRED.
 10. THE INSTRUMENT AIR TO FCV-366 AND TCV-28 HAS BEEN ISOLATED. BOTH VALVES ARE FULLY OPEN. (106-B)



CENTRIFUGAL CHARGING PR 2-1 DC-663210-40, 47, 48, 49, 50
 RESIDUAL HEAT EXCHANGER 2-1 DC-663217-4
 RHR. PP 2-1 SEAL WTR. CLR. DC-663217-9, 16
 SAFETY INJECTION PUMP 2-2 DC-663216-26, 32
 REACTOR CONTAINMENT FAN COOLERS DC-663079-1, 8, 9
 FAN COILS
 FAN MOTORS H. X.

HEADER "A" COMPONENTS

- NOTES:
- ELBOW TAPS FOR FLOW INDICATION (104-D)
 - REFER TO SIS PP SEAL FLUSH SYSTEM DIAGRAM, PG & E RECORD NO. DC-663216-27 (107-D)
 - REFER TO SIS PP LUBE OIL COOLER SYSTEM MFR. DWG., PG & E RECORD NO. DC-663216-26 (105-D)
 - PX'S TO BE LOCATED WITHIN 1' OF H.X. (106-E)
 - 2" BLIND FLANGE SEE NOTES 2 & 3 SH. 5A (100-B)
 - POST-LOCA SAMPLE COOLERS ARE DESIGN CLASS II & SEISMICALLY ANALYZED PER DGM M-45 (103-D)
 - CODE CLASS "E" PORTION OF LINE 4145 SHALL BE SEISMICALLY ANALYZED TO DESIGN CLASS I CRITERIA (102-E)

UNIT 2

DIABLO CANYON POWER PLANT - PG&E CO.			
COMPONENT COOLING WATER SYSTEM			
DRAWING	SHEET	PAGE	REV
108014	10	0	42

RASTER=erui7622.DGN
 DGN=erui7622.DGN
 CAD User: JARO Date: 01-29-2008

INPGIC I Size	01-29-2008	JARO	Fxc2	KERSI J. DALAL	MECHANICAL	M 16690	3/31/2008	REVISED PER FCT-30442
	DATE	DWN	RE	PROFESSIONAL ENGINEER	PE DISC.	PE#	PE EXP.	