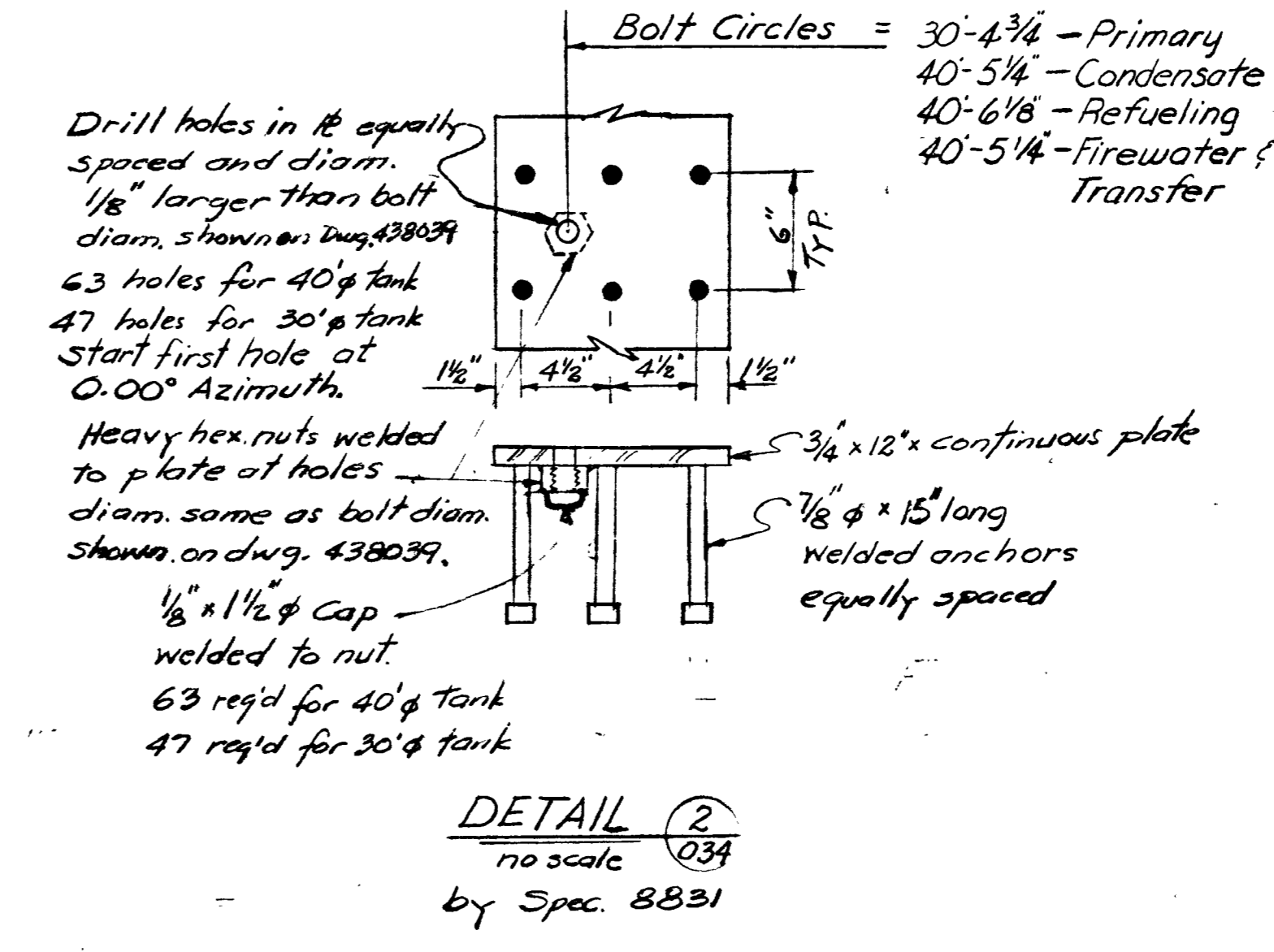
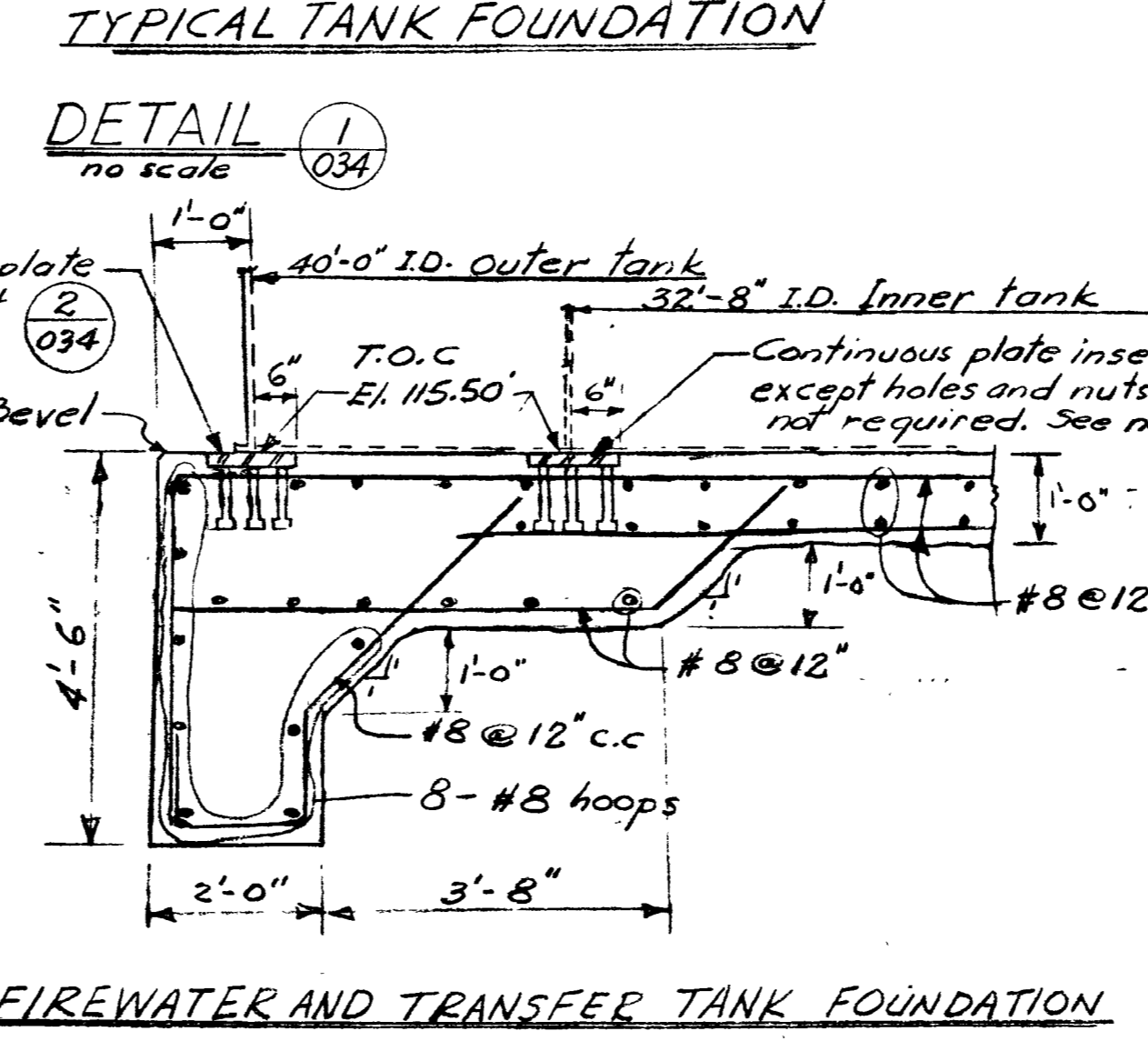
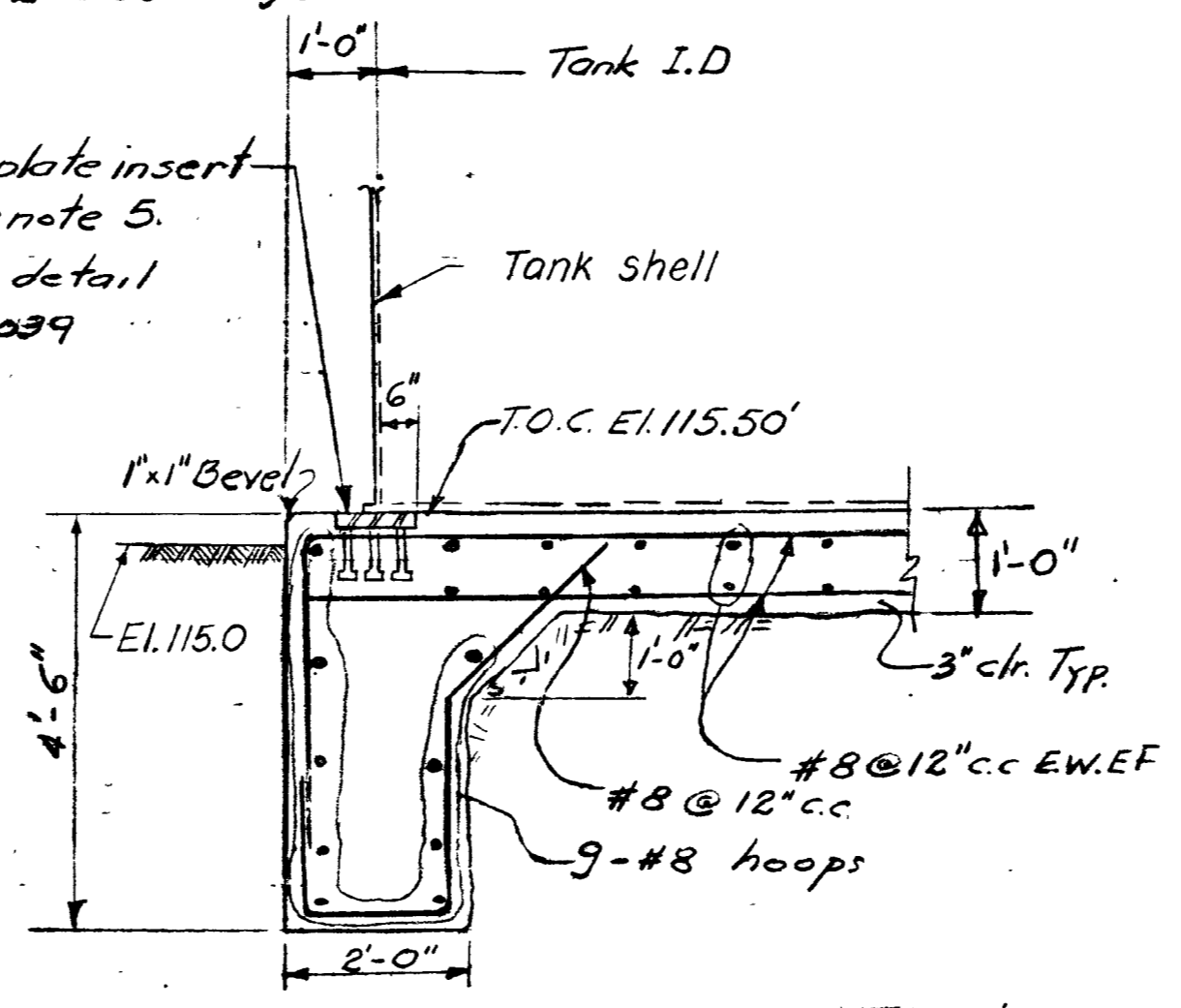


- NOTES:**
- Excavation:
 - Remove all the natural clays, & expose the sandstone or siltstone bedrock in the area shown in plan.
 - After the entire area has been excavated & before any backfill is placed it shall be inspected by the engineer.
 - Backfill:
 - Excavation shall be backfilled as soon as possible with gravelly, sandy silt from the plant site borrow area.
 - The backfill shall be placed in 8 inch (max.) horiz. layers and compacted to 95% of the max. density obtainable by the ASTM D1557-66 T (c) method of compaction.
 - Numbers shown as 115.8 on plan, are existing ground elevations.
 - Material for plate inserts, bolts, nuts etc. (except anchor bolts and nuts) shall be stainless steel for Primary water and Refueling Water Tanks, Carbon Steel for Condensate and Transfer Tanks. Stainless Steel shall be ASTM A330 Type 304. Anchor bolts and nuts per Note 7.
 - Provide a 6" x 6" blockout in tank fdn. for tank bottom drains. For location see Tank Requirement dwgs. Fill block out with grout after tank installation.
 - Anchor bolts and nuts shall meet requirements of ASTM A-193 Gr. B7.
 - For Exterior Conc. Tank Protection See Ref. on Dwg. 438033



PLAN (Unit 1 shown, Unit 2 See dwg. later)
Scale 1" = 10'

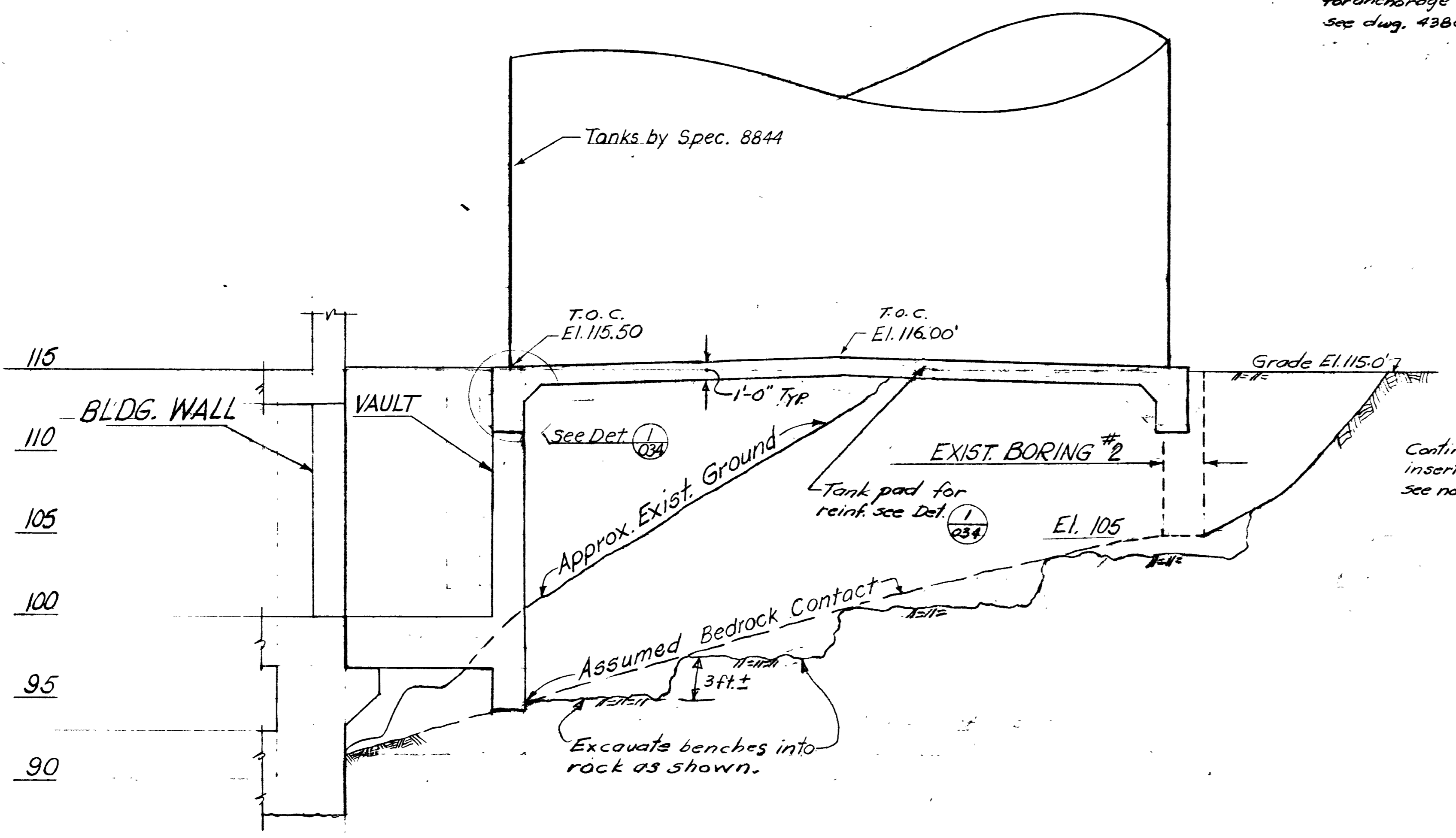
Continuous plate insert Det. 2 (034) See note 5 for anchorage detail see dwg. 438039



REFERENCES:

- Grading Plan 438140
- Tank Locations 438032
- Tank Requirements 438038 and 438039
- Fuel Hdg. Bldg. 438440
- Conc. Outline & Reinf. - Water Storage Tank Fdn. & Vault 438033
- Typical Concrete Details 438464
- Supplier Dwgs. Conc. Lift - 683861 - 45 & 62
- Rebar - 663371 - 536, 537
- Embedded Metal - 663243 251 Thru 253

ALL TANKS, EXCEPT THE PRIMARY WATER, HAVE BEEN MODIFIED SEE DWG 463987.



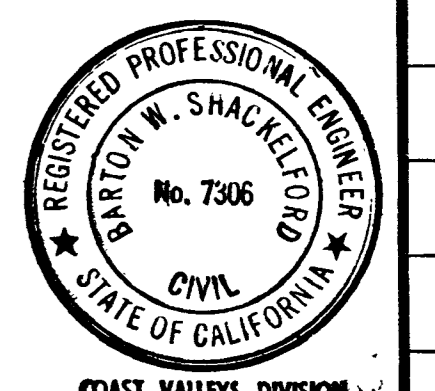
Previous changes not documented

GROUP	CHG. NO.	CHG. DATE	CHG. DESCRIPTION	BY	CHK.	APPD.	DATE
5	1-22-71	12/17/71	Revised Det. 2 and notes	JUN	ARS	CHS	12/17/71
4	6-14-70	6/17/70	Renew Tank Foundations	JUN	ARS	CHS	6/17/70
3	5-29-70	5/29/70	Revised Tank Foundations	JUN	ARS	CHS	5/29/70
2	4-1-70	4/1/70	Revised Tank Foundations	JUN	ARS	CHS	4/1/70
1	3-17-70	3/17/70	Issued for Info Spec. 8844	JUN	ARS	CHS	3/17/70
6	4-20-71	4/20/71	Added Notes and Supplier Dwgs.	JUN	ARS	CHS	4/20/71
7	1-21-70	1/21/70	Added Bolt Circles	JUN	ARS	CHS	1/21/70

NO.	DATE	DESCRIPTION	GM	BY	CH	APPD.	DATE
1	1-21-70	Approved for Const Spec. 8831	JUN	ARS	CHS	CHS	1/21/70

REV INDEXED REV 7 UNITS 15'

FOUNDATIONS FOR WATER TANKS
DIABLO CANYON
DEPARTMENT OF ENGINEERING
PACIFIC GAS AND ELECTRIC COMPANY
SAN FRANCISCO, CALIFORNIA



BILL OF MATERIAL	DRAWING LIST 050052
SUPERSEDES	
SUPERSEDED BY	
SHEET NO.	SHEETS
DRAWING NUMBER	CHANGE
438034	7