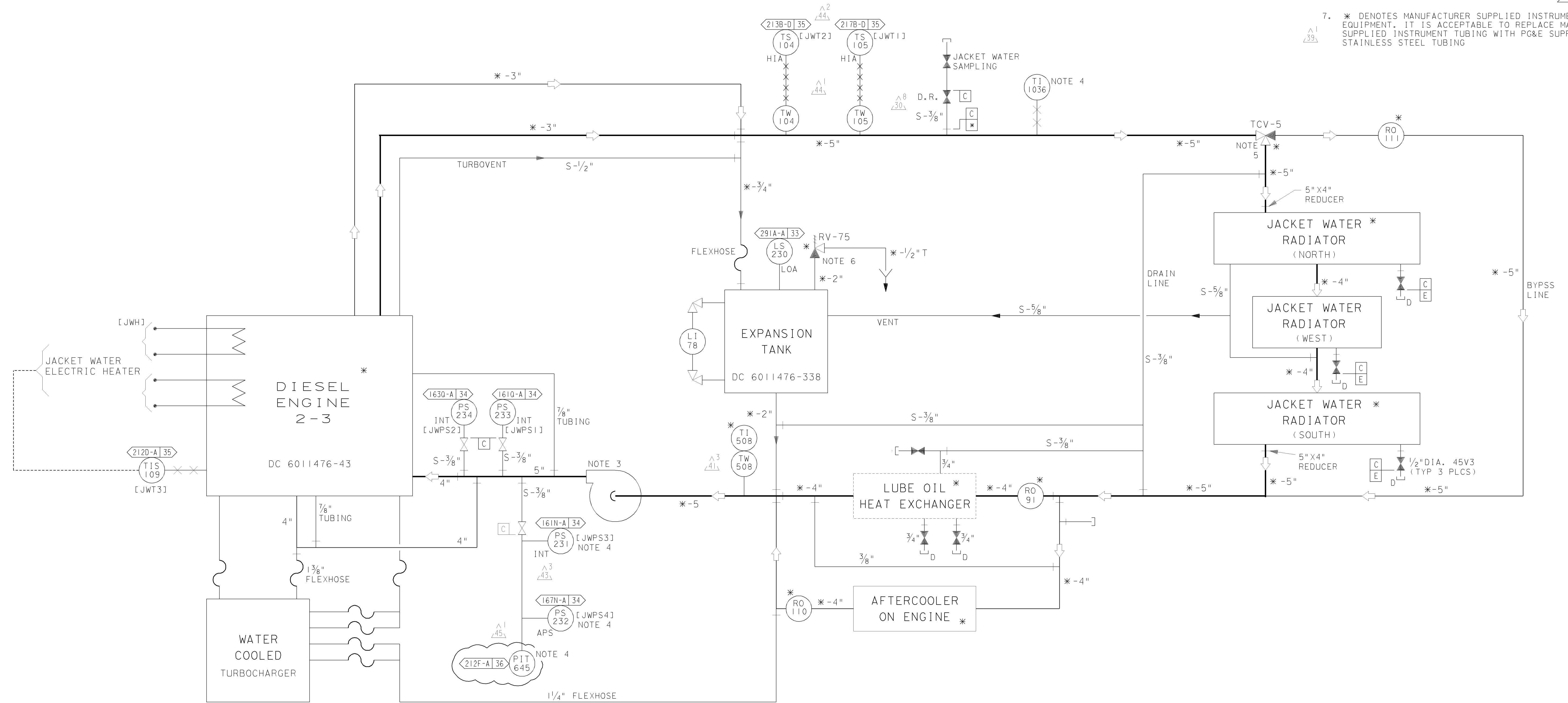


- NOTES:
- THIS SYTEM PROVIDED COMPLETELY INSTALLED WITH ENGINE-GENERATOR UNITS [DC 6011476-73]
  - [ ] MANUFACTURER NUMBER
  - ENGINE DRIVEN JACKET WATER PUMP >83B-C<
  - MOUNTED ON ENGINE CONTROL PANEL >83B-D,86B-D<
  - SELF-CONTAINED CONTROL VALVE, FOR OPERATION SEE MANUFACTURER TECHNICAL MANUAL DC-6011476-322 >87B-B< (VALVE SHOWN IN HOT POSITION)
  - CAP WITH SPRING RELIEF FOR VENT/VACUUM >85B-B<
  - \* DENOTES MANUFACTURER SUPPLIED INSTRUMENTS AND EQUIPMENT. IT IS ACCEPTABLE TO REPLACE MANUFACTURER SUPPLIED INSTRUMENT TUBING WITH PG&E SUPPLIED S-SPEC STAINLESS STEEL TUBING



ENGINE JACKET WATER COOLING SYSTEM 2-3

REFERENCE MFR. DWG. DC-6011476-468

UNIT 2

DIABLO CANYON POWER PLANT - PG&E CO.  
DIESEL ENGINE-GENERATOR ASSOCIATED SYSTEMS

DRAWING	SHEET	PAGE	REV
108021	8B	0	45

11-03-2008	RxG2	FxC2		ALAN GLEN BARTA	ELECTRICAL	E 9271	9/30/2009	REVISED PER DDN-2*79-0
DATE	DWN	RE	1V	PROFESSIONAL ENGINEER	PE DISC.	PE#	PE EXP.	

RASTER=108021s8B.DGN  
 DGN=108021s8B.DGN  
 CAD User:RxG2 Date: 11-03-2008