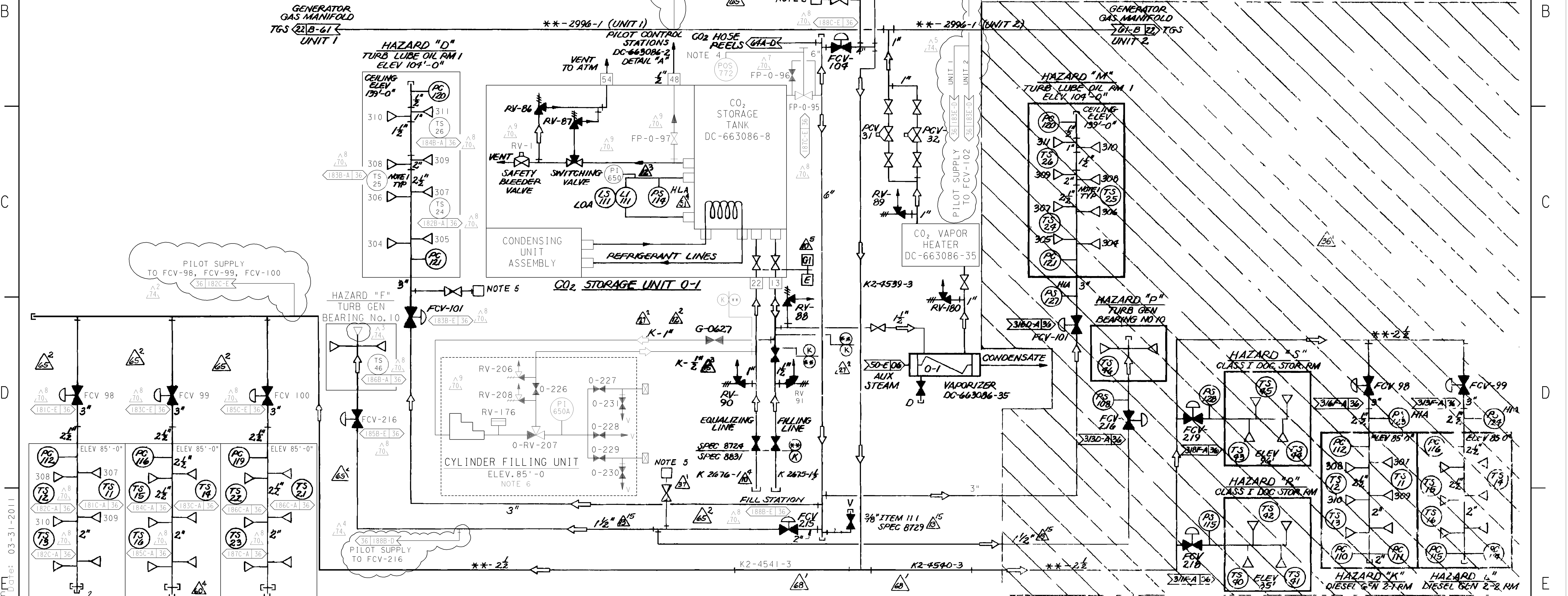


- NOTES:
- 1 FOR INSTRUMENT SCHEMATIC REFERENCE, SEE SHEETS 18B, 18C & 18E OF DWG 102036 AND SHEET 18E OF DWG 108036.
 - 2 ** INDICATES PIPING UNDER SPEC 8724 OR SATISFIES NFPA-12 PIPING REQUIREMENTS.
 - 3 ALL PIPING IS CLASS "G1" EXCEPT AS NOTED.
 - 4 ALARMS WHEN MAIN SHUTOFF VALVE IS CLOSED.
 - 5 CARDOX ODORIZER ASSEMBLY MODEL NO 24824 AND 1/2" BALL VALVE CHEMETRON NO 1 061-0711 WITH LOCKING DEVICE NO 5 061-0773.
 - 6 FOR ADDITIONAL INFORMATION ON CYLINDER FILLING UNIT, REF DC 663088-6.
 - 7 DELETED



CARBON DIOXIDE FIRE PROTECTION SYSTEM
HAZARD SPRAY HEADS
REF DC-663086-1&2

DIABLO CANYON POWER PLANT - PG&E CO.
FIRE PROTECTION SYSTEMS

DRAWING	SHEET	PAGE	REV
102018	6	0	74

RASTER=2018s6.dgn
 DGN=2018s6.dgn
 CAD User: JBMX Date: 03-31-2011

03-31-2011	JBMX	Fxc2	KERSI J. DALAL	MECHANICAL	M 16690	3/31/2012	REVISED PER DFT-7*1100
DATE	DWN	RE	PROFESSIONAL ENGINEER	PE DISC.	PE#	PE EXP.	