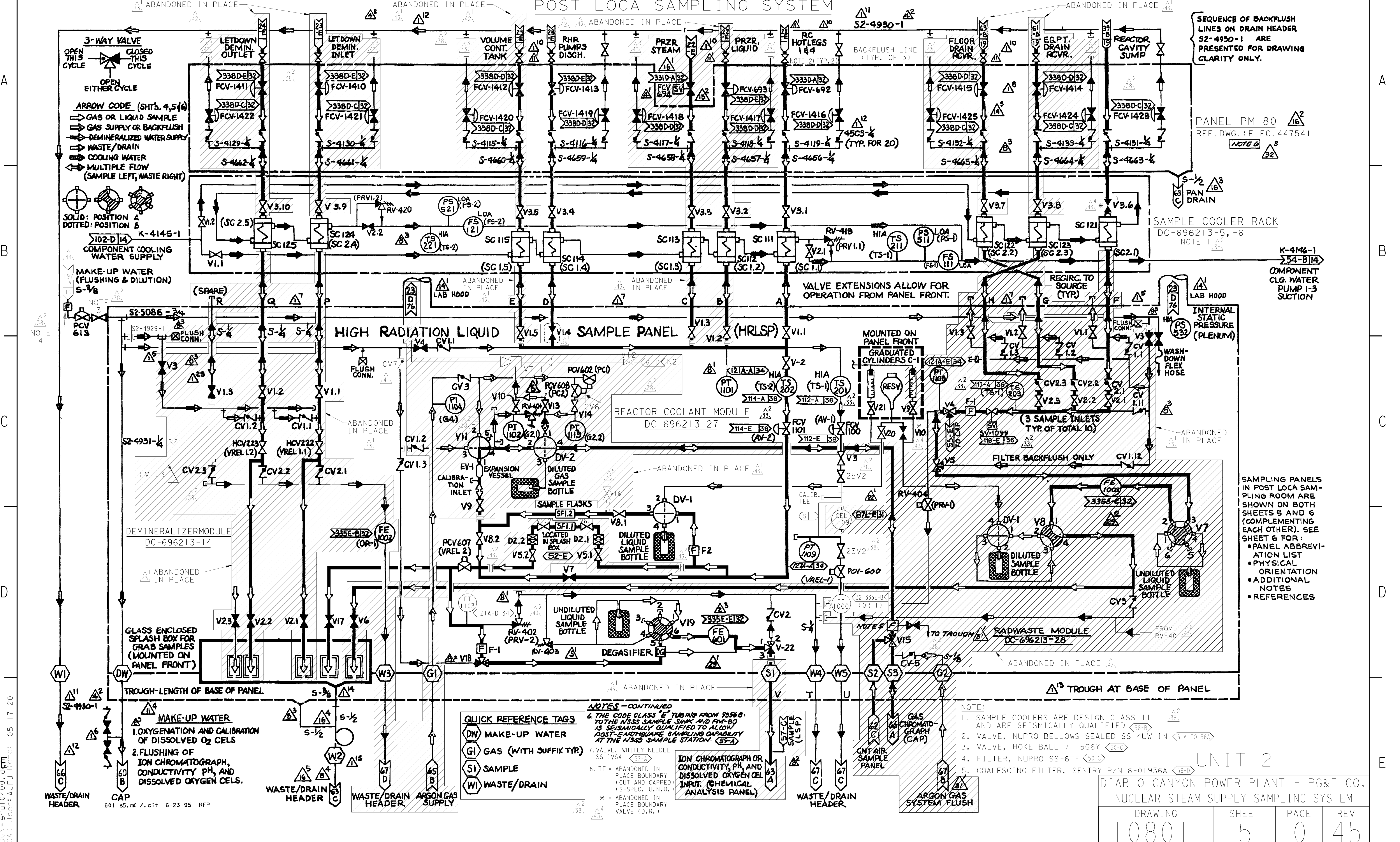


# POST LOCA SAMPLING SYSTEM



SEQUENCE OF BACKFLUSH LINES ON DRAIN HEADER S2-4930-1 ARE PRESENTED FOR DRAWING CLARITY ONLY.

PANEL PM 80  
REF. DWG.: ELEC. 447541  
NOTE 6

SAMPLE COOLER RACK  
DC-696213-5, -6  
NOTE 1

SAMPLING PANELS IN POST LOCA SAMPLING ROOM ARE SHOWN ON BOTH SHEETS 5 AND 6 (COMPLEMENTING EACH OTHER). SEE SHEET 6 FOR:  
 • PANEL ABBREVIATION LIST  
 • PHYSICAL ORIENTATION  
 • ADDITIONAL NOTES  
 • REFERENCES

**QUICK REFERENCE TAGS**  
 DW MAKE-UP WATER  
 G1 GAS (WITH SUFFIX TYP)  
 S1 SAMPLE  
 W1 WASTE/DRAIN

**NOTES - CONTINUED**  
 6. THE CODE CLASS "E" TUBING FROM 9556-B TO THE NSSS SAMPLE SINK AND FM-80 IS SEISMICALLY QUALIFIED TO ALLOW POST-EARTHQUAKE SAMPLING CAPABILITY AT THE NSSS SAMPLE STATION. (6FA)  
 7. VALVE, WHITEY NEEDLE SS-1VS4 (52-A)  
 8. JC = ABANDONED IN PLACE BOUNDARY (CUT AND CAPPED) (S-SPEC. U.N.O.)  
 \* = ABANDONED IN PLACE BOUNDARY VALVE (D.R.)

**NOTE:**  
 1. SAMPLE COOLERS ARE DESIGN CLASS II AND ARE SEISMICALLY QUALIFIED (58-B)  
 2. VALVE, NUPRO BELLOWS SEALED SS-4UW-IN (51A TO 58)  
 3. VALVE, HOKE BALL 7115G6Y (50-T)  
 4. FILTER, NUPRO SS-6TF (50-T)  
 5. COALESCING FILTER, SENTRY P/N 6-01936A (56-T)

UNIT 2  
 DIABLO CANYON POWER PLANT - PG&E CO.  
 NUCLEAR STEAM SUPPLY SAMPLING SYSTEM

DRAWING	SHEET	PAGE	REV
1080111	5	0	45