

A

B

C

D

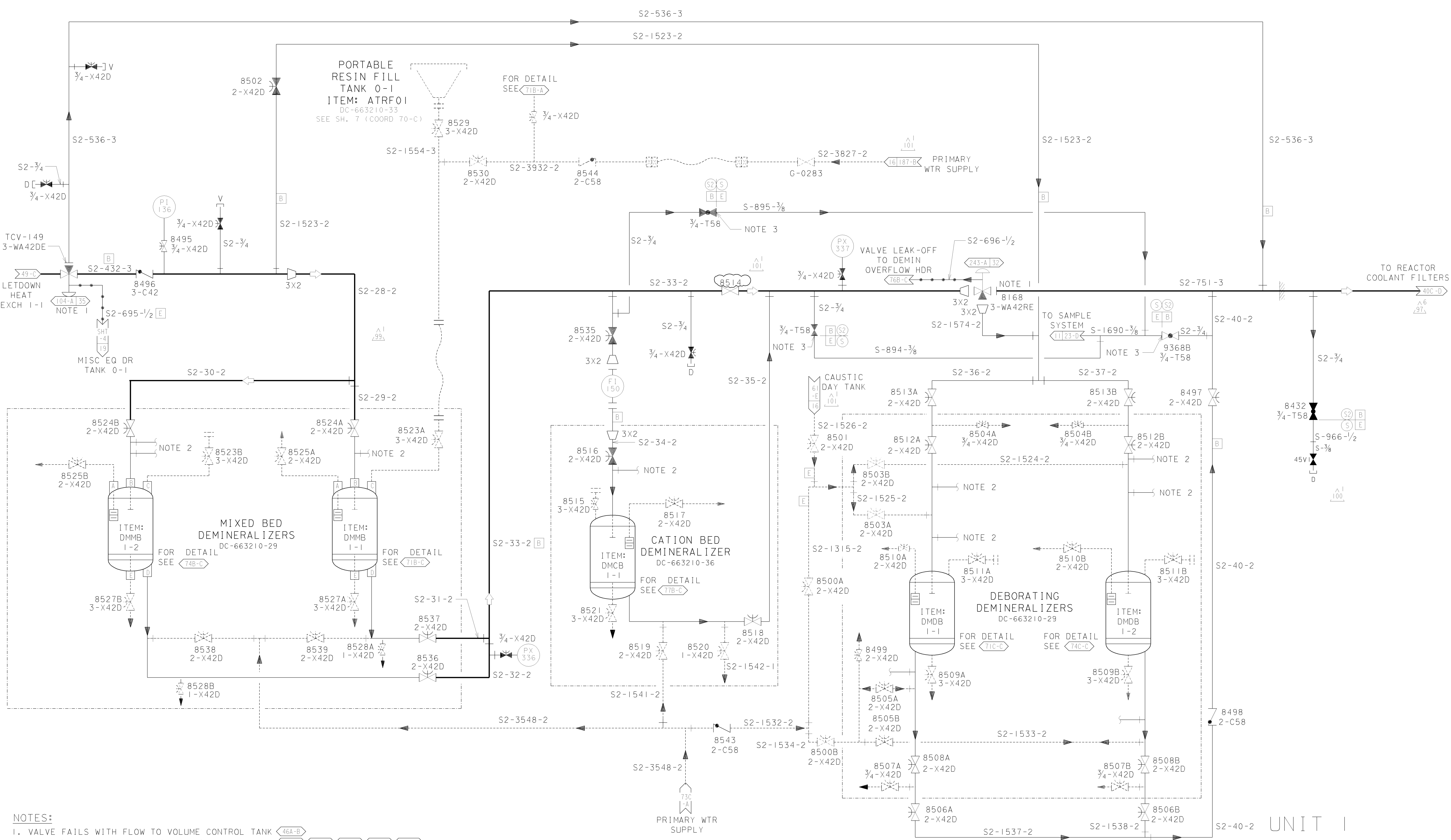
A

B

C

D

E



**NOTES:**  
 1. VALVE FAILS WITH FLOW TO VOLUME CONTROL TANK (46A-B)  
 2. FOR VENTS & DRAINS OFF INLET LINES SEE SH. 7 (41A-C, 42A-C, 44A-C, 46A-C, 47A-C)  
 3. 3/8" TUBING IS INSERTED IN 3/4" NOMINAL PIPE AT VALVE (45A-B)  
 REF DWG 663210-15

**UNIT 1**

**DIABLO CANYON POWER PLANT - PG&E CO.**  
**CHEMICAL & VOLUME CONTROL SYSTEM**

DRAWING	SHEET	PAGE	REV
102008	4A	0	102

RASTER=2008s4a.dgn  
 DGN=2008s4a.dgn  
 CAD User: JBMX Date: 06-24-2010

06-24-2010	JBMX	AGB2	KERSI J. DALAL	MECHANICAL	M 16690	3/31/2012	REVISED PER DFT-7*829
DATE	DWN	RE	IV	PROFESSIONAL ENGINEER	PE DISC.	PE#	PE EXP.