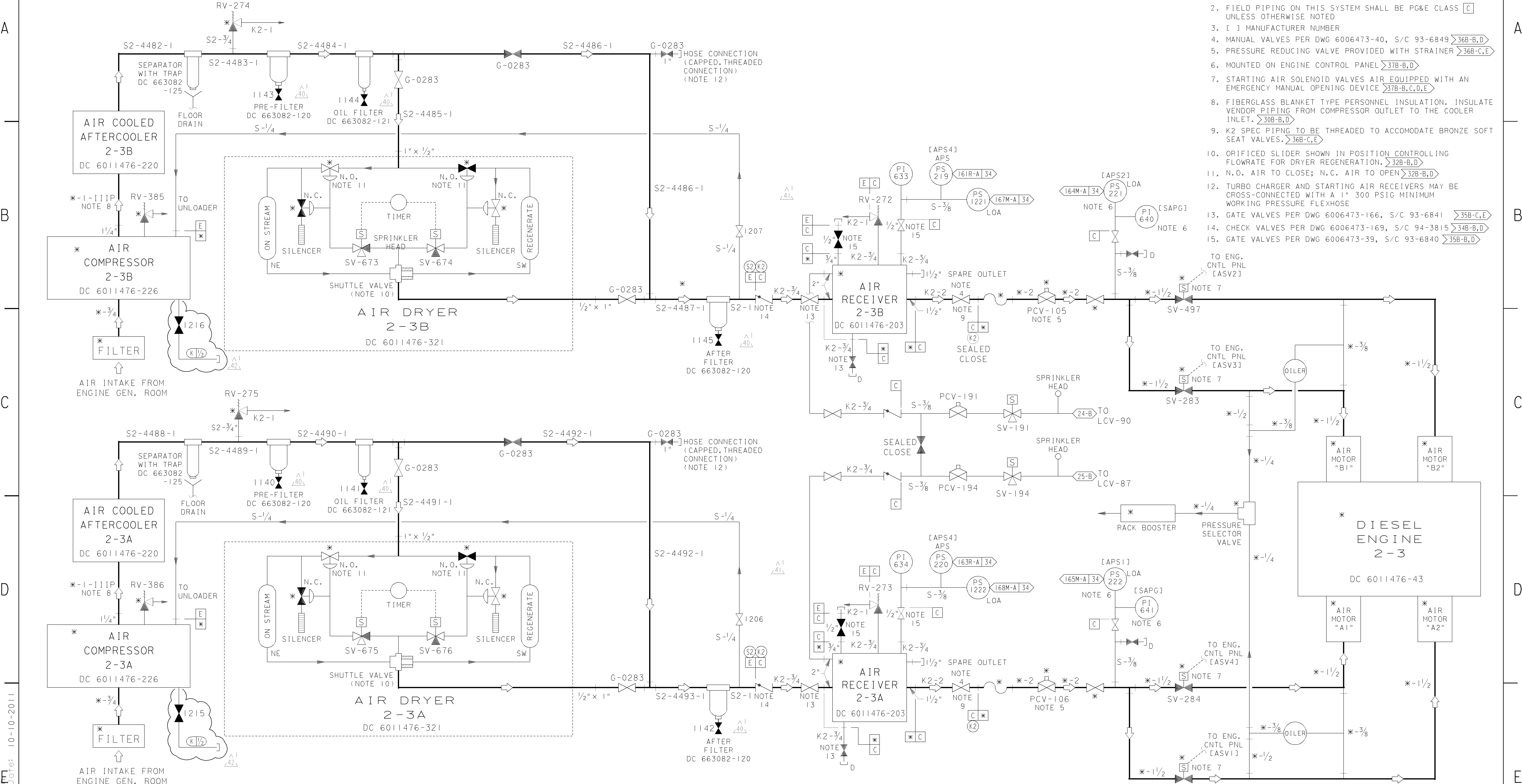


- NOTES:
- * DENOTES MANUFACTURER SUPPLIED INSTRUMENTS & EQUIPMENT. IT IS ACCEPTABLE TO REPLACE MANUFACTURER SUPPLIED INSTRUMENT TUBING WITH PG&E SUPPLIED S-SPEC STAINLESS STEEL TUBING
 - FIELD PIPING ON THIS SYSTEM SHALL BE PG&E CLASS [C] UNLESS OTHERWISE NOTED
 - [] MANUFACTURER NUMBER
 - MANUAL VALVES PER DWG 6006473-40, S/C 93-6849 >36B-B,D
 - PRESSURE REDUCING VALVE PROVIDED WITH STRAINER >36B-C,E
 - MOUNTED ON ENGINE CONTROL PANEL >37B-B,D
 - STARTING AIR SOLENOID VALVES AIR EQUIPPED WITH AN EMERGENCY MANUAL OPENING DEVICE >37B-B,C,D,E
 - FIBERGLASS BLANKET TYPE PERSONNEL INSULATION. INSULATE VENDOR PIPING FROM COMPRESSOR OUTLET TO THE COOLER INLET. >30B-B,D
 - K2 SPEC PIPING TO BE THREADED TO ACCOMMODATE BRONZE SOFT SEAT VALVES. >36B-C,E
 - ORIFICED SLIDER SHOWN IN POSITION CONTROLLING FLOWRATE FOR DRYER REGENERATION. >32B-B,D
 - N.O. AIR TO CLOSE; N.C. AIR TO OPEN >32B-B,D
 - TURBO CHARGER AND STARTING AIR RECEIVERS MAY BE CROSS-CONNECTED WITH A 1" 300 PSIG MINIMUM WORKING PRESSURE FLEXHOSE
 - GATE VALVES PER DWG 6006473-166, S/C 93-6841 >35B-C,E
 - CHECK VALVES PER DWG 6006473-169, S/C 94-3815 >34B-B,D
 - GATE VALVES PER DWG 6006473-39, S/C 93-6840 >35B-B,D



STARTING AIR SYSTEM 2-3
 REFERENCE MFR. DWG. DC-6011476-469

DIABLO CANYON POWER PLANT - PG&E CO.			
DIESEL ENGINE-GENERATOR ASSOCIATED SYSTEMS			
DRAWING	SHEET	PAGE	REV
108021	3B	0	42

UNIT 2

RASTER=8021.s3b.dgn
 DCN=8021.s3b.dgn
 CAD User:AJFJ Date: 10-10-2011

10-10-2011	AJFJ	RxG2		KERSI J. DALAL	MECHANICAL	M 16690	3/31/2012	REVISED PER DFT-7*1303
DATE	DWN	RE	1V	PROFESSIONAL ENGINEER	PE DISC.	PE#	PE EXP.	