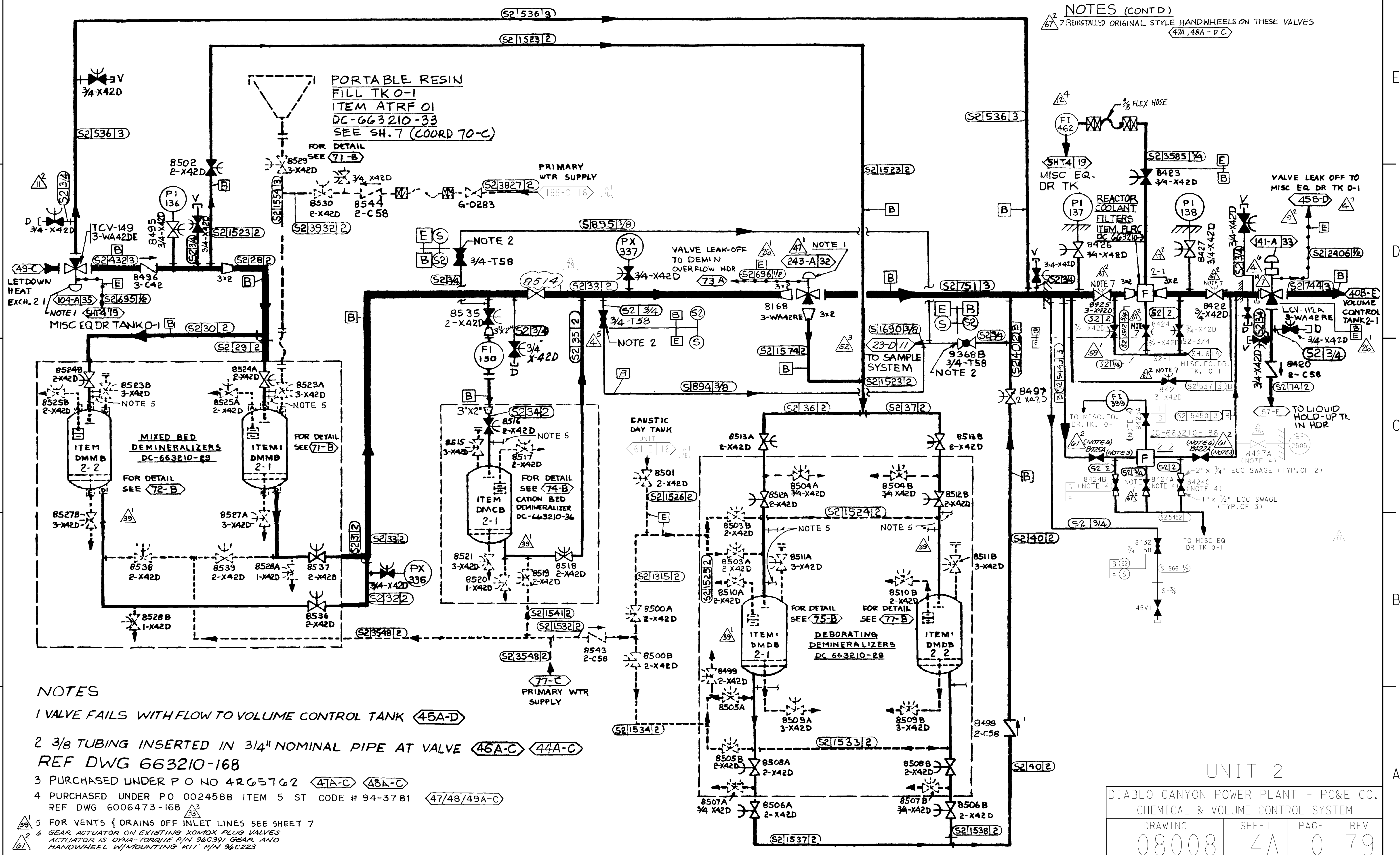


NOTES (CONT'D)  
 67 REINSTALLED ORIGINAL STYLE HANDWHEELS ON THESE VALVES  
 (47A, 48A-D-C)



- NOTES**
- 1 VALVE FAILS WITH FLOW TO VOLUME CONTROL TANK (45A-D)
  - 2 3/8 TUBING INSERTED IN 3/4" NOMINAL PIPE AT VALVE (46A-C) (44A-C)  
REF DWG 663210-168
  - 3 PURCHASED UNDER P O NO 4RG5762 (47A-C) (48A-C)
  - 4 PURCHASED UNDER P O 0024588 ITEM 5 ST CODE # 94-3781 (47/48/49A-C)  
REF DWG 6006473-168
  - 5 FOR VENTS & DRAINS OFF INLET LINES SEE SHEET 7
  - 6 GEAR ACTUATOR ON EXISTING XOMOX PLUG VALVES  
ACTUATOR IS DYNA-TORQUE P/N 96C391 GEAR AND  
HANDWHEEL W/MOUNTING KIT P/N 96C223

UNIT 2

DIABLO CANYON POWER PLANT - PG&E CO.  
 CHEMICAL & VOLUME CONTROL SYSTEM

| DRAWING | SHEET | PAGE | REV |
|---------|-------|------|-----|
| 108008  | 4A    | 0    | 79  |

RASTER=001.FT1141.dgn  
 DGN=001.FT1141.dgn  
 CAD User: JBMX Date: 06-24-2010