

A

B

C

D

E

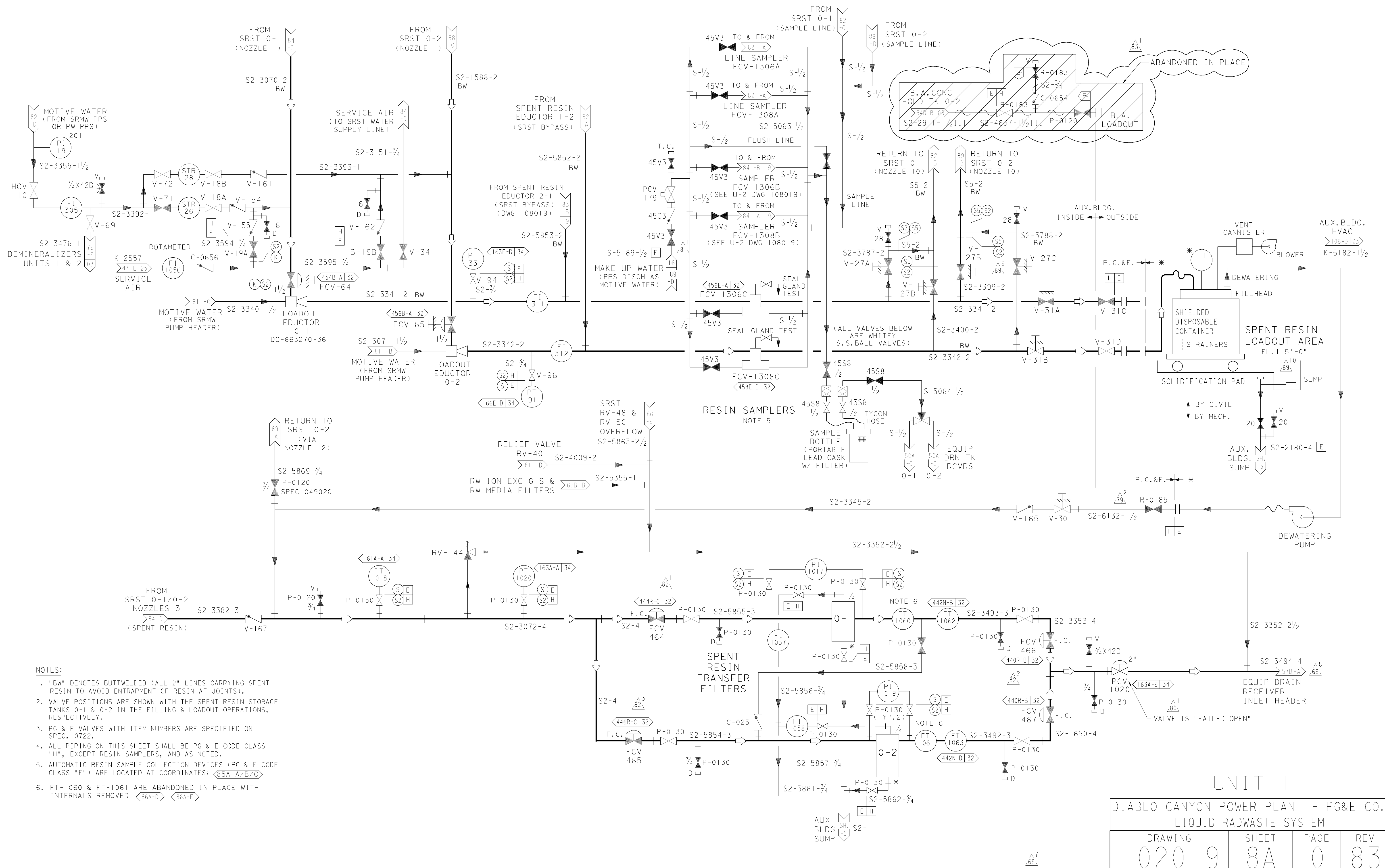
A

B

C

D

E



- NOTES:
- "BW" DENOTES BUTTWELDED (ALL 2" LINES CARRYING SPENT RESIN TO AVOID ENTRAPMENT OF RESIN AT JOINTS).
 - VALVE POSITIONS ARE SHOWN WITH THE SPENT RESIN STORAGE TANKS 0-1 & 0-2 IN THE FILLING & LOADOUT OPERATIONS, RESPECTIVELY.
 - PG & E VALVES WITH ITEM NUMBERS ARE SPECIFIED ON SPEC. 0722.
 - ALL PIPING ON THIS SHEET SHALL BE PG & E CODE CLASS "H", EXCEPT RESIN SAMPLERS, AND AS NOTED.
 - AUTOMATIC RESIN SAMPLE COLLECTION DEVICES (PG & E CODE CLASS "E") ARE LOCATED AT COORDINATES: $\langle 85A-A/B/C \rangle$
 - FT-1060 & FT-1061 ARE ABANDONED IN PLACE WITH INTERNALS REMOVED. $\langle 86A-D \rangle$ $\langle 86A-E \rangle$

UNIT I

DIABLO CANYON POWER PLANT - PG&E CO.
LIQUID RADWASTE SYSTEM

DRAWING	SHEET	PAGE	REV
102019	8A	0	83

RASTER=201958A.DGN
 DGN=201958A.DGN
 CAD User: AJFJ Date: 04-13-2011