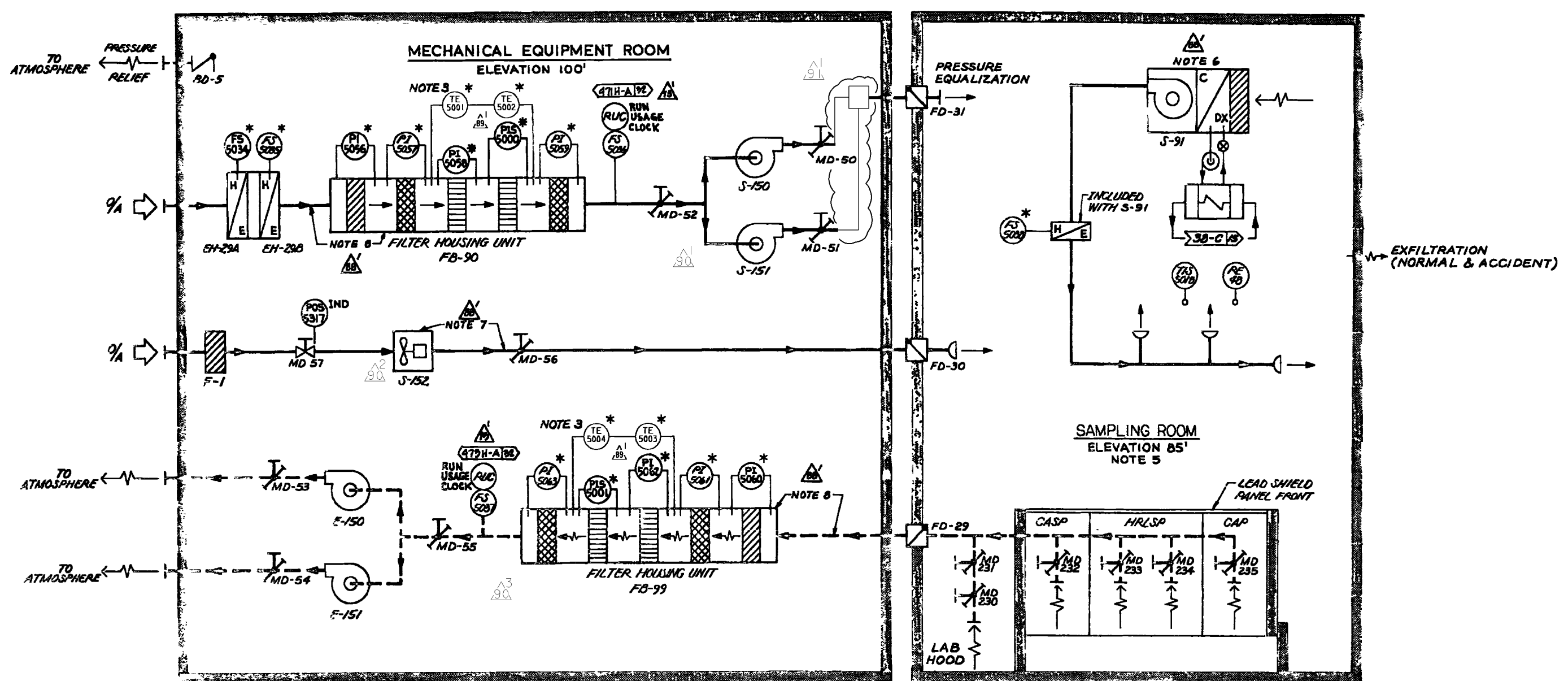


A
B
C
D
E



NOTES

- 1 FOR LEGEND, ABBREVIATIONS, INDEX, AND GENERAL NOTES, SEE 102023 SHEET 2 AND 102001 SHEET 3
- 2 SEE DRAWING 512904 FOR AIR FLOW DIAGRAM
- 3 CONAX RTD ASSEMBLY (RTD-43Y2-SS25TD) IS PROVIDED WITH MOORE RBA/2W ALARM SWITCH FOR FIRE PROTECTION. LOCAL ALARM IS INITIATED WITH A TEMPERATURE RISE TO 150-F. *RTD* = RESISTANCE TEMPERATURE DETECTOR. SEE DC-663278-622 FOR REFERENCE 72/73-A 73/74-C
- 4 A1
- 5 SEE DRAWING 102011 SHEET 6 568-B(1) FOR SAMPLING ROOM PHYSICAL LAYOUT
- 6 FOR NORMAL A/C SYSTEM, EQUIPMENT ARE DESIGNATED DESIGN CLASS II, BUT SUPPORTED SO THAT THEY WILL REMAIN IN PLACE AFTER A HOSGRI EVENT NOT NECESSARY TO FUNCTION AFTER THE EARTHQUAKE 77-A A1
- 7 FOR NORMAL SUPPLY AIR SYSTEM DUCT AND DUCT SUPPORTS ARE QUALIFIED TO SEISMIC CLASS I CRITERIA, EQUIPMENT ARE DESIGNATED DESIGN CLASS II, BUT SUPPORTED SO THAT THEY WILL REMAIN IN PLACE AFTER A HOSGRI EVENT NOT NECESSARY TO FUNCTION AFTER THE EARTHQUAKE 78-C A1
- 8 FOR EMERGENCY VENTILATION SYSTEM, EQUIPMENT ARE EVALUATED TO REMAIN INTACT AFTER BEING SUBJECTED TO A POSTULATED HOSGRI EVENT CALCULATED STRESSES ARE TO BE WITHIN THE ALLOWABLES FOR DESIGN CLASS I EQUIPMENT FOR EMERGENCY DUCTWORK, DUCT AND DUCT SUPPORTS ARE QUALIFIED TO SEISMIC CLASS I CRITERIA 72-B 75-C A1

A5 SHEET 7 CHANGE
26 DAMPER/EQUIP
NUMBERS

UNIT 1

POST LOCA SAMPLING SYSTEM HVAC

DIABLO CANYON POWER PLANT - PG&E CO.			
VENTILATION & AIR CONDITIONING SYSTEMS			
DRAWING	SHEET	PAGE	REV
102023	7	0	91

RASTER=erj04915.DGN
 DGN=erj04915.DGN
 CAD User: JARO Date:01-15-2008

INPG2ND
1 Size

01-15-2008	JARO	Fxc2		STEPHEN PERRY BAKER	MECHANICAL	M 27135	6/30/2009	REVISED PER FCT-33147
DATE	DWN	RE	IV	PROFESSIONAL ENGINEER	PE DISC.	PE#	PE EXP.	