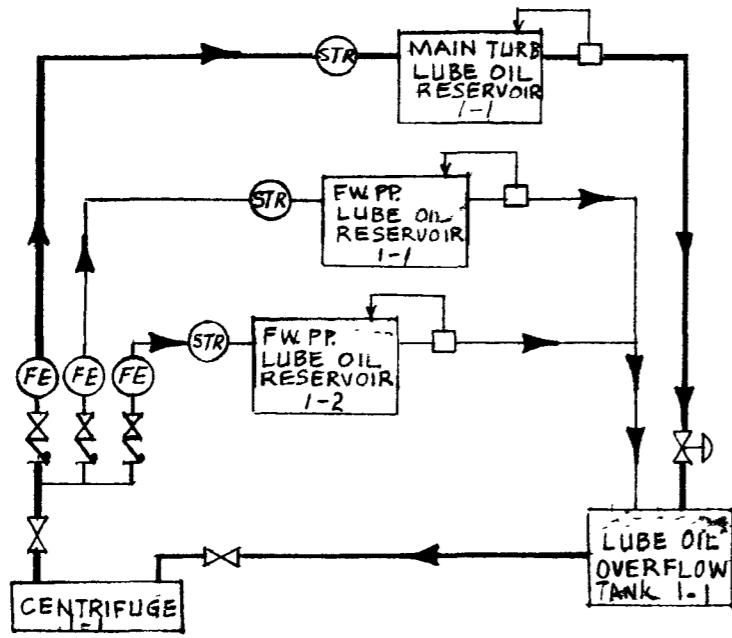


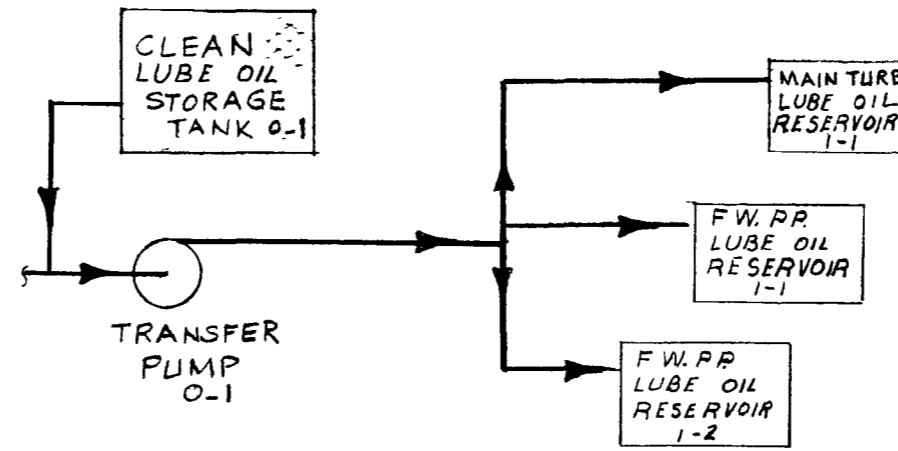
1 NORMAL OPERATION

CENTRIFUGE SYSTEM CONTINUOUSLY RECIRCULATES AND CLEANS LUBE OIL THRU THE 3 RESERVOIRS.



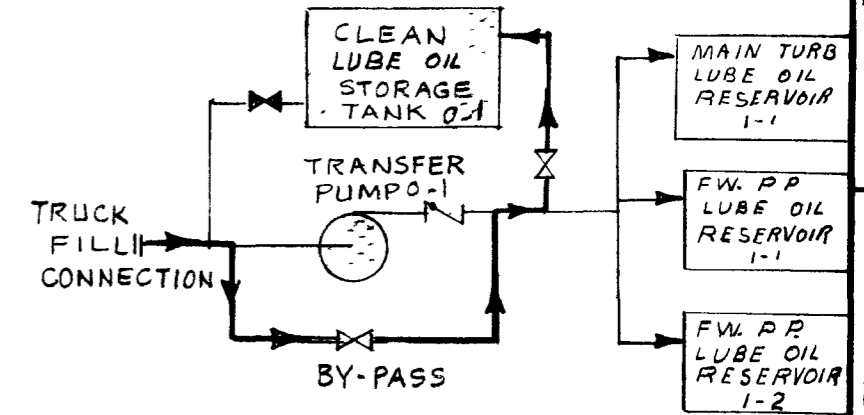
3 START UP

FILL MAIN TURBINE & FWPP 1/2 LUBE OIL RESERVOIRS FROM CLEAN OIL TANK, USING TRANSFER PUMP.



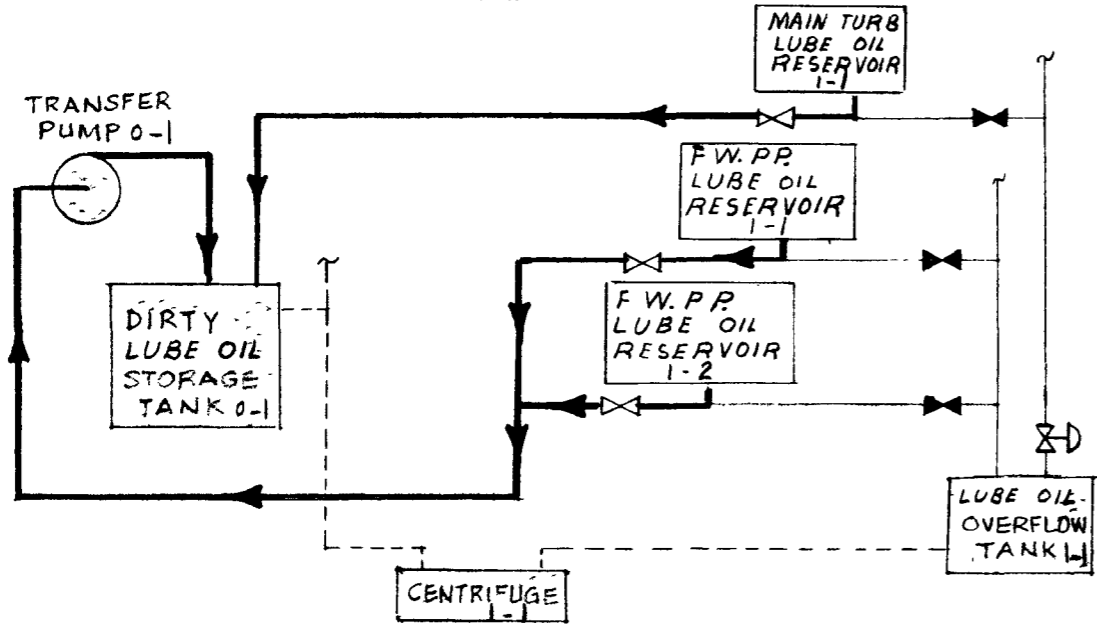
5 TRUCK FILL

USE BY-PASS AROUND TRANSFER PUMP WHEN TRUCK PUMP IS USED. TRANSFER PUMP MAYBE USED AS AN ALTERNATE TO TRUCK PUMP.



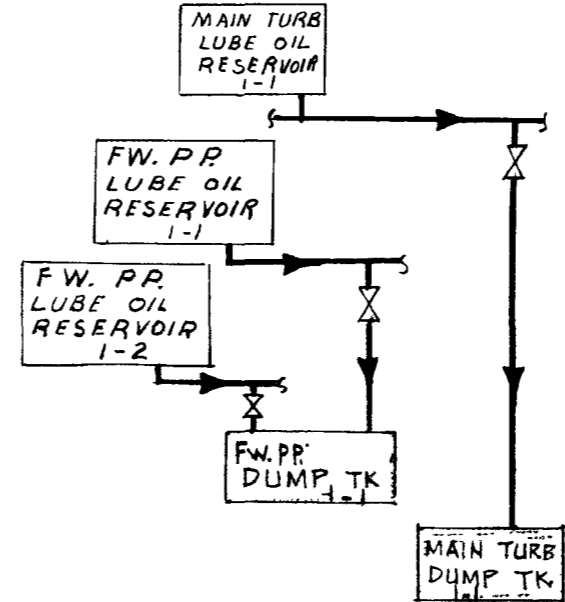
2 DRAIN RESERVOIRS

DRAIN MAIN TURBINE LUBE OIL RESERVOIR TO DIRTY LUBE OIL TANK BY GRAVITY
DRAIN FWPP RESERVOIRS TO DIRTY LUBE OIL STORAGE TANK BY USING TRANSFER PUMP.



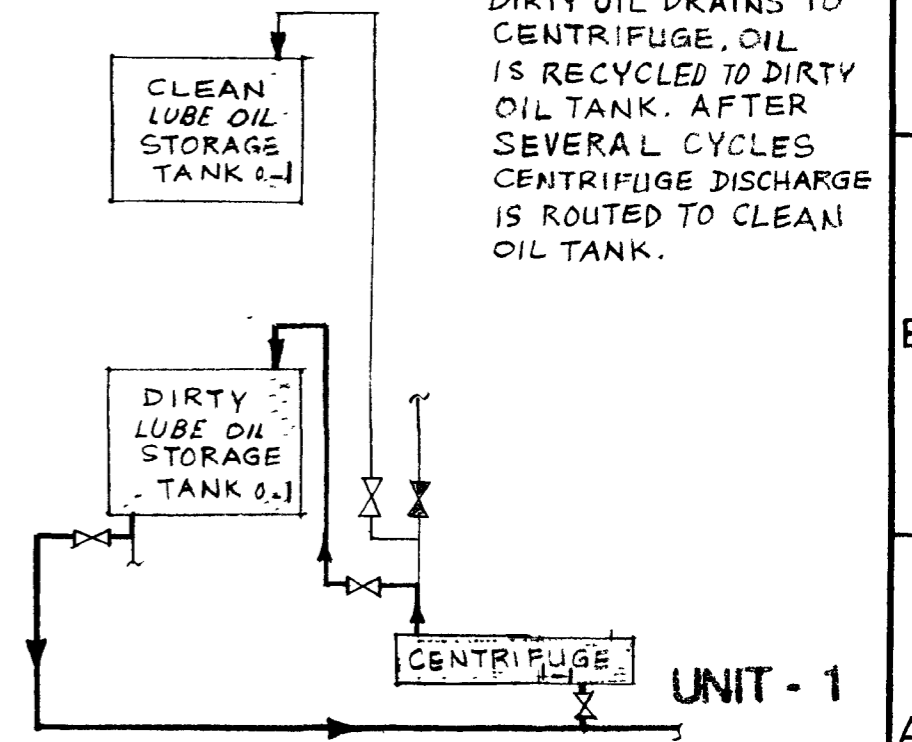
4 EMERGENCY DUMP

MANUALLY OPEN DRAIN VALVES TO DUMP TANKS



6 CLEANING DIRTY OIL

DIRTY OIL DRAINS TO CENTRIFUGE, OIL IS RECYCLED TO DIRTY OIL TANK. AFTER SEVERAL CYCLES CENTRIFUGE DISCHARGE IS ROUTED TO CLEAN OIL TANK.



35 M/M Neg. /

SCAN IC

INDEXED REV. 1

P.G.&E.CO.	SHEET NO 11 OF	SHEETS
	DRAWING NUMBER	CHANGE
102020		/