

A

B

C

D

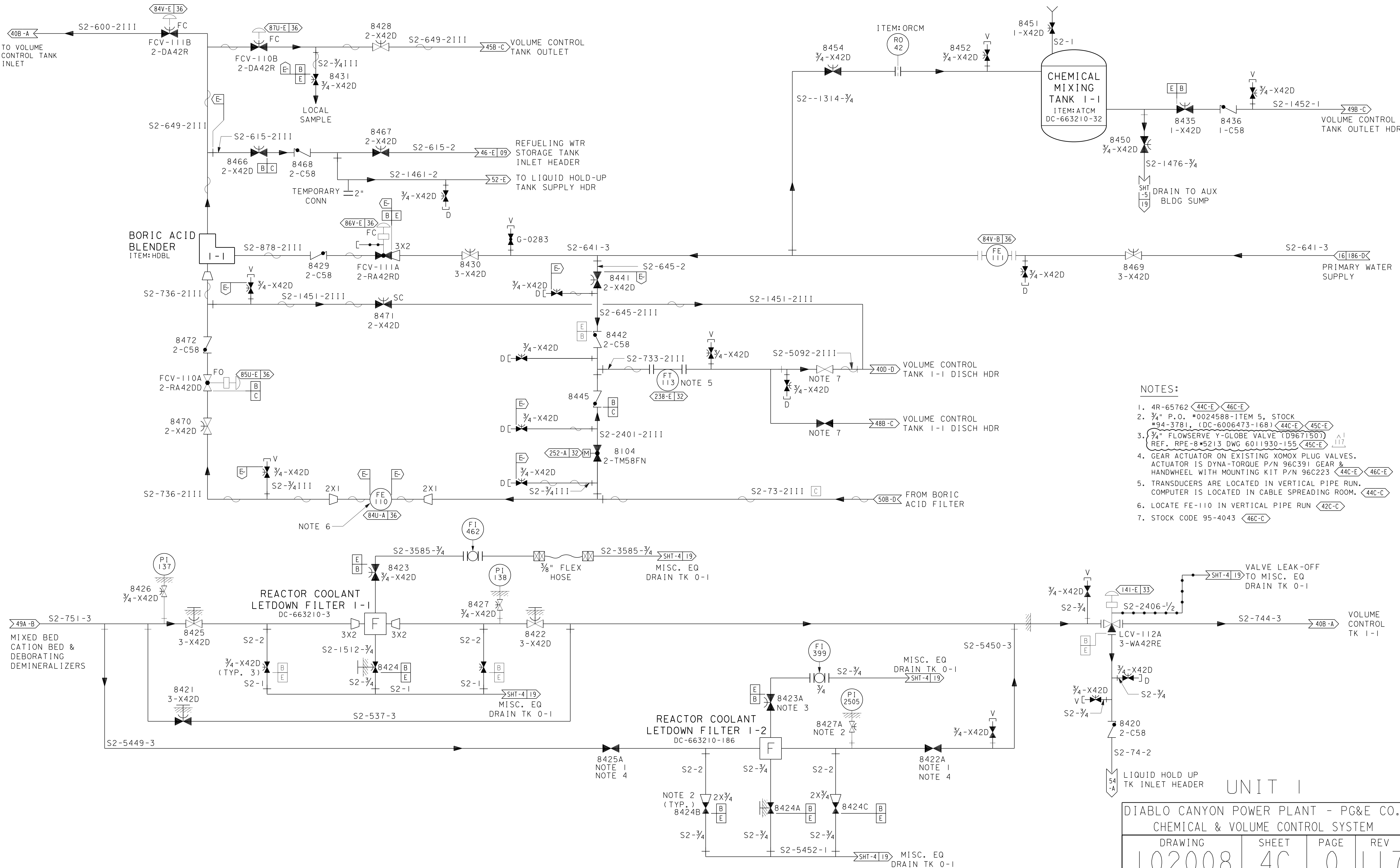
A

B

C

D

E



- NOTES:
- 4R-65762 <44C-E> <46C-E>
 - 3/4" P.O. #0024588-ITEM 5, STOCK #94-3781, (DC-6006473-168) <44C-E> <45C-E>
 - 3/4" FLOWERVE Y-GLOBE VALVE (D967150) REF. RPE-8*5213 DWG 6011930-155 <45C-E>
 - GEAR ACTUATOR ON EXISTING XOMOX PLUG VALVES. ACTUATOR IS DYNA-TORQUE P/N 96C391 GEAR & HANDWHEEL WITH MOUNTING KIT P/N 96C223 <44C-E> <46C-E>
 - TRANSDUCERS ARE LOCATED IN VERTICAL PIPE RUN. COMPUTER IS LOCATED IN CABLE SPREADING ROOM. <44C-C>
 - LOCATE FE-110 IN VERTICAL PIPE RUN <42C-C>
 - STOCK CODE 95-4043 <46C-C>

UNIT I

DIABLO CANYON POWER PLANT - PG&E CO.
CHEMICAL & VOLUME CONTROL SYSTEM

DRAWING	SHEET	PAGE	REV
102008	4C	0	117

RASTER=102008-4C-0-.dgn
 DGN=102008-4C-0
 CAD User: ZNS4 Date: 08-15-2019

08-15-2019	ZNS4	FXC2	N/A	NOT REQUIRED PER CF3.1D5	-	-	-	Revised Per DFT-7*4933
DATE	DWN	RE	IV	PROFESSIONAL ENGINEER	PE DISC.	PE#	PE EXP.	