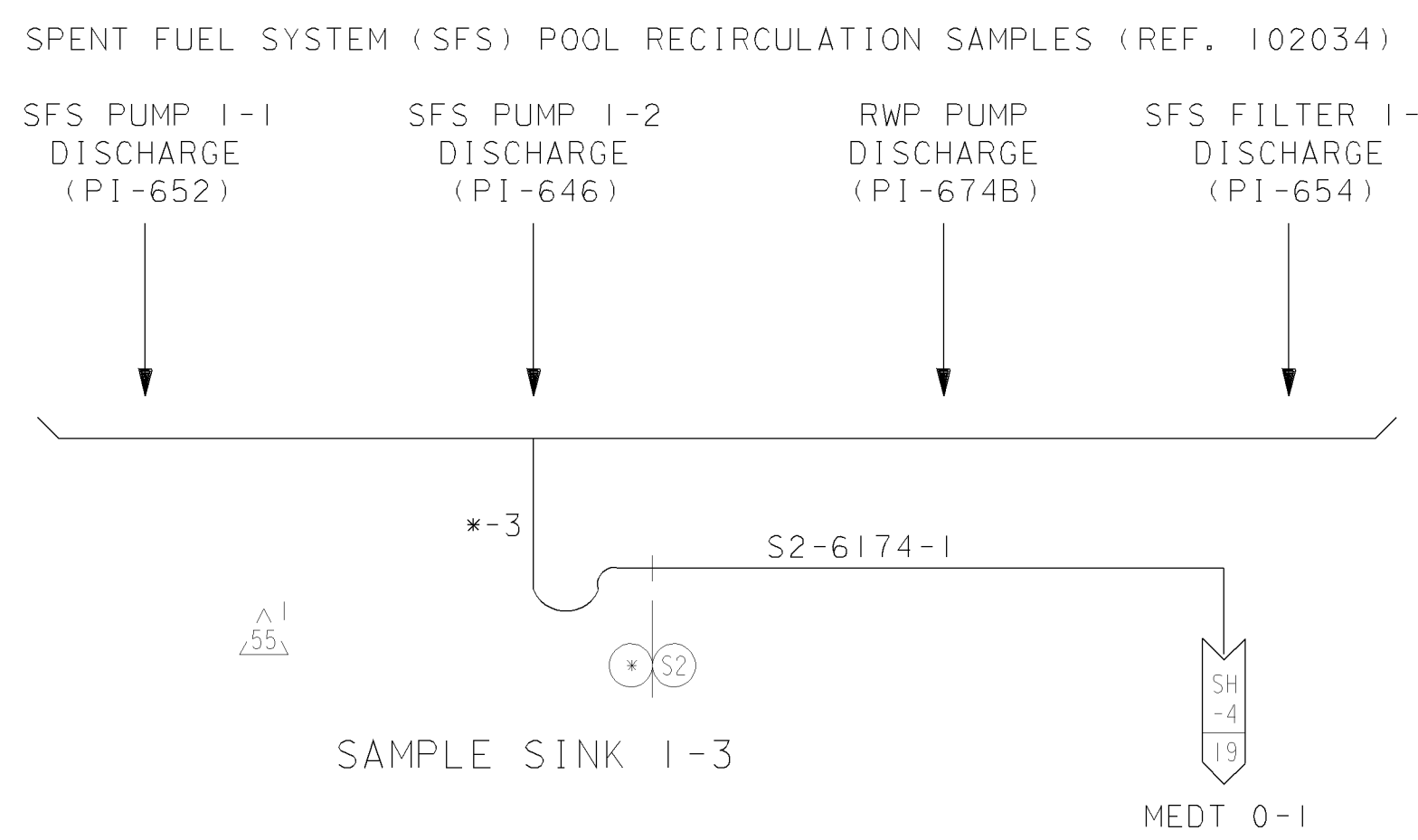
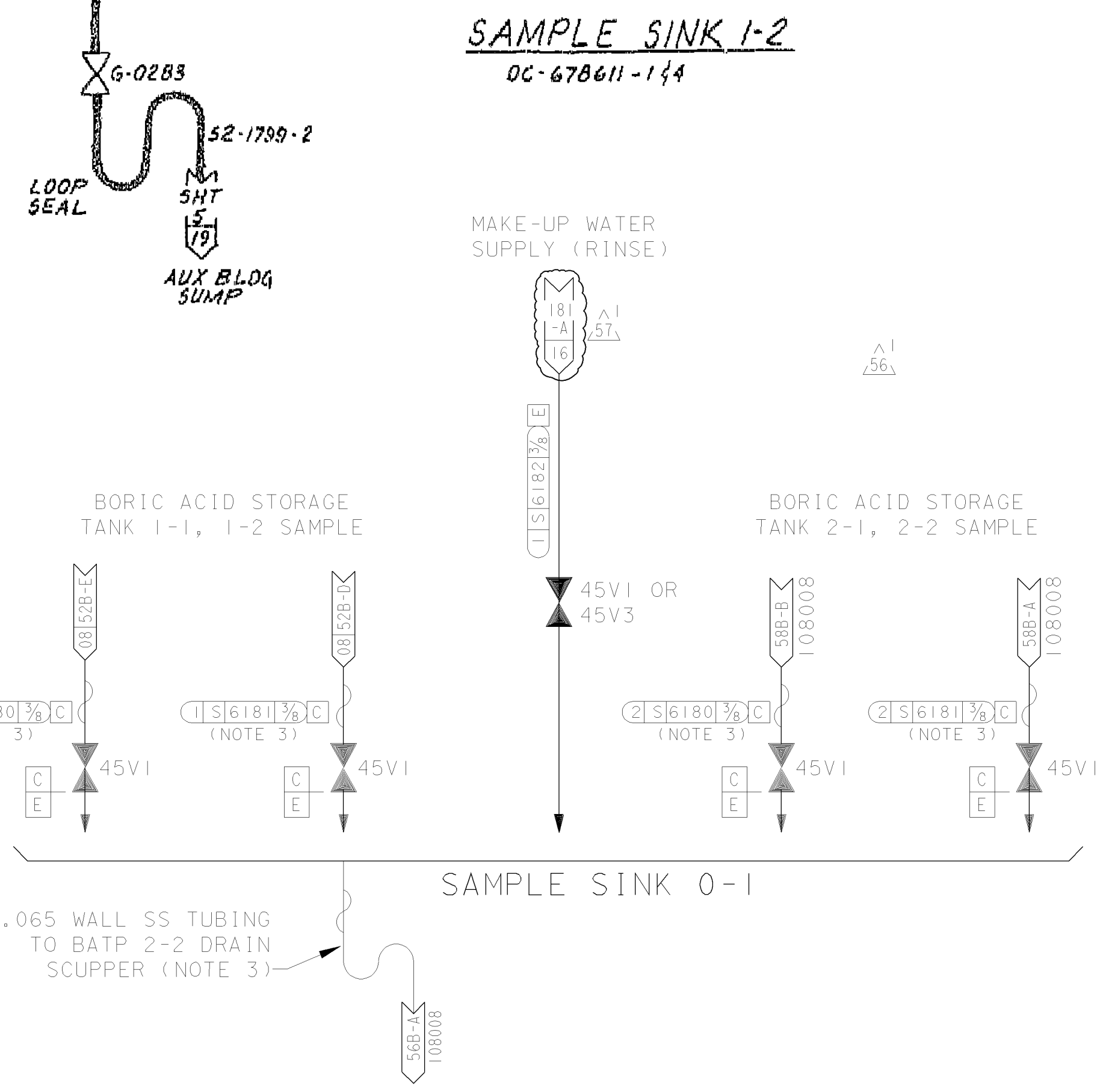


- NOTES:**
1. ALL PIPE & TUBING ON THIS SHEET SHALL BE PIPE CLASS "E" & INSTRUMENT CLASS II RESPECTIVELY.
 2. ALL VALVES EXCEPT AS NOTED SHALL BE "WHITEY" 6LR36 SPEC B8M2
 3. INSULATE WITH 2 LAYERS OF LEWCO FT60 OR EQUIV. INSULATION.



UNIT 1
DIABLO CANYON POWER PLANT - PG&E CO.

DRAWING	SHEET	PAGE	REV
102011	3	0	57

01-26-2006	MIBF	KJD3	FRANCIS C. LING	MECHANICAL	M 16098	12/31/2007	REVISED PER FCT-030760
DATE	DWN	RE	PROFESSIONAL ENGINEER	PE DISC.	PE#	PE EXP.	

RASTER=001h1127.dgn
 DCN=001h1127.dgn
 CAD User: MIBF Date: 01-26-2006