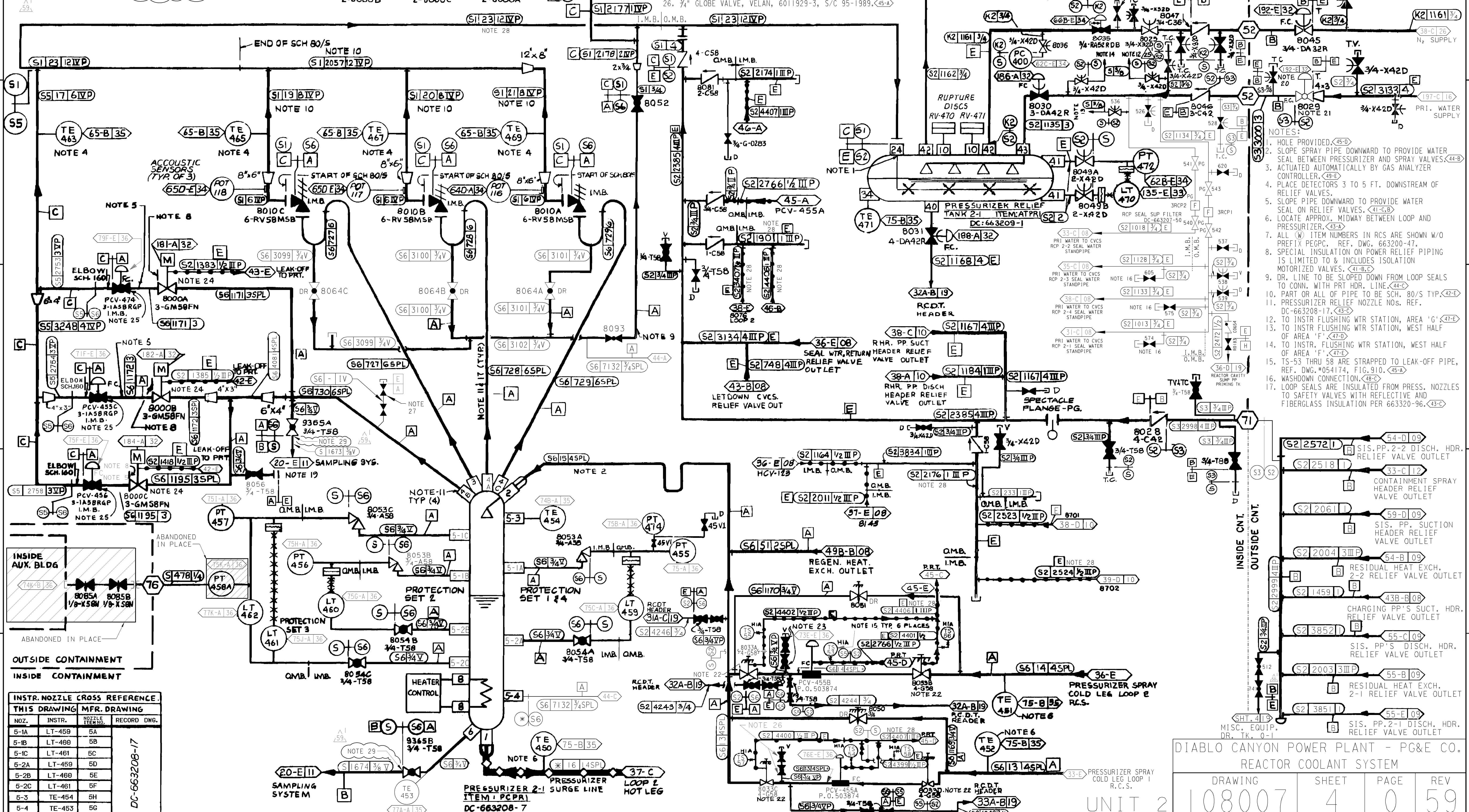


LEGEND: VALVE LEAK-OFF
 PIPING DESIGNED TO THE 1955 EDITION OF ANSI B31.1 AND APPLICABLE NUCLEAR CODE CASES.

NOTES CONT'D:
 27. ANCHOR DARLING #1878 1" DOUBLE DISC SW SS GATE VALVE. (42-E)
 28. INSULATION ON PORTIONS OF THESE LINES HAVE ADDITIONAL BANDS INSTALLED ON 3" CENTER-TO-CENTER (MAX.) SPACING. SEE DWG 226254, 226258, 226259, 226267, 226269 & 449343 FOR SPECIFIC LOCATIONS.
 29. THE CODE CLASS A BOUNDARY INCLUDES THE 3/4" TO 3/8" REDUCER FITTING DOWNSTREAM OF VALVES 9365A/B. (42-A, 42-E)

NOTES CONT'D:
 18. DELETED
 19. SEE NEW SHT 7A FOR RVR/LIS ALIGNMENT FOR OPERATION.
 20. USE 3/4"-X420, TTT VALVE #2471-10-M-3/4", DWG No. 663219-267, S/C 42-2543 FOR THE TEST CONN. 3"-150". TTT BALL VALVE DWG No. 6006473-236.
 21. REMOVE OPERATORS DISCONNECTED AND ABANDONED IN PLACE. (45/46-A)
 23. GLOBE VALVE, VELAN, 6011929-3.
 24. VALVES 8000A, B & C HAVE 1/8" HOLE DRILLED IN THE UPSTREAM SIDE OF THE DISK; 663219-388. (41-C/B)
 25. VALVES PCV-455C, 456 & 474 ARE 2" SIZE WITH ENDS PREPARED TO MATCH 3" PIPE. (40-C/B)
 26. 3/4" GLOBE VALVE, VELAN, 6011929-3, S/C 95-1989. (45-A)



- NOTES:**
- HOLE PROVIDED. (45-D)
 - SLOPE SPRAY PIPE DOWNWARD TO PROVIDE WATER SEAL BETWEEN PRESSURIZER AND SPRAY VALVES. (44-B)
 - ACTUATED AUTOMATICALLY BY GAS ANALYZER CONTROLLER. (49-E)
 - PLACE DETECTORS 3 TO 5 FT. DOWNSTREAM OF RELIEF VALVES.
 - SLOPE PIPE DOWNWARD TO PROVIDE WATER SEAL ON RELIEF VALVES. (41-C/B)
 - LOCATE APPROX. MIDWAY BETWEEN LOOP AND PRESSURIZER. (43-A)
 - ALL (W) ITEM NUMBERS IN RCS ARE SHOWN W/O PREFIX PEGPC. REF. DWG. 663200-47.
 - SPECIAL INSULATION ON POWER RELIEF PIPING IS LIMITED TO & INCLUDES ISOLATION MOTORIZED VALVES. (41-B/C)
 - DR. LINE TO BE SLOPED DOWN FROM LOOP SEALS TO CONN. WITH PRT HDR. LINE. (44-C)
 - PART OR ALL OF PIPE TO BE SCH. 80/S TYP. (42-E)
 - PRESSURIZER RELIEF NOZZLE NOS. REF. DC-663208-17. (43-C)
 - TO INSTR. FLUSHING WTR STATION, AREA 'G'. (47-E)
 - TO INSTR. FLUSHING WTR STATION, WEST HALF OF AREA 'F'. (47-D)
 - TO INSTR. FLUSHING WTR STATION, WEST HALF OF AREA 'F'. (47-D)
 - TS-53 THRU 58 ARE STRAPPED TO LEAK-OFF PIPE, REF. DWG. #054174, FIG. 910. (45-A)
 - WASHDOWN CONNECTION. (48-E)
 - LOOP SEALS ARE INSULATED FROM PRESS. NOZZLES TO SAFETY VALVES WITH REFLECTIVE AND FIBERGLASS INSULATION PER 663320-96. (43-C)

INSTR. NOZZLE CROSS REFERENCE:

THIS DRAWING	INSTR.	NOZZLE ITEM NO.	RECORD DWG.
5-1A	LT-459	5A	
5-1B	LT-460	5B	
5-1C	LT-461	5C	
5-2A	LT-459	5D	
5-2B	LT-460	5E	
5-2C	LT-461	5F	
6-3	TE-454	5H	
6-4	TE-453	5G	

DC-663208-17

DIABLO CANYON POWER PLANT - PG&E CO.
 REACTOR COOLANT SYSTEM
 DRAWING 108007 SHEET 4 PAGE 0 REV 59
 UNIT 2