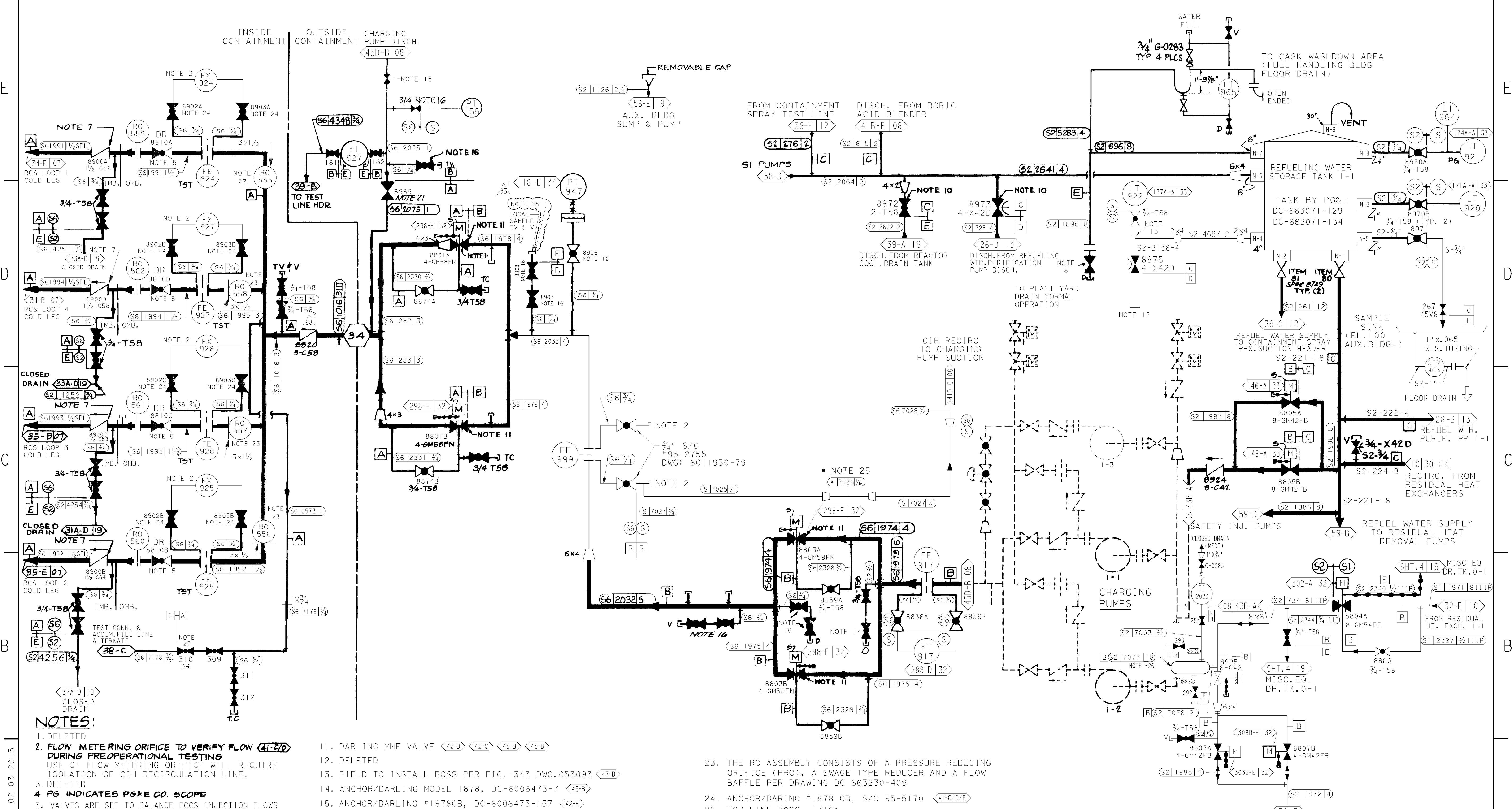


RASTER=10200954.dgn  
 DGN=10200954.dgn  
 CAD User: MNRU Date: 02-03-2015



- NOTES:**
1. DELETED
  2. FLOW METERING ORIFICE TO VERIFY FLOW (41-C-D) DURING PREOPERATIONAL TESTING  
USE OF FLOW METERING ORIFICE WILL REQUIRE ISOLATION OF CIH RECIRCULATION LINE.
  3. DELETED
  4. PG. INDICATES PG&E CO. SCOPE
  5. VALVES ARE SET TO BALANCE ECCS INJECTION FLOWS AND TO PREVENT PUMP RUNOUT, THEN CONTROLLED IN THE THROTTLED POSITION. (40-C) (40-D)
  6. ALL WESTINGHOUSE ITEM NUMBERS IN SIS ARE SHOWN WITHOUT PREFIX PG&E-SI
  7. SPECIAL LINE INSULATION INCLUDING CHECK (40-9D)
  8. WHEN WATER IS CONTAMINATED, BLIND FLANGE (47-D) WITH HOSE BIBB MUST BE INSTALLED TO ALLOW DRAINING TO MISC. EQUIP. DRAIN TANK 0-1. VLV: CRANE-ALDYCO (RA 031713)
  9. DELETED
  10. CHAIN OPERATED. (46-D) (47-D)

11. DARLING MNF VALVE (42-D) (42-C) (45-B) (45-B)
12. DELETED
13. FIELD TO INSTALL BOSS PER FIG.-343 DWG.053093 (47-D)
14. ANCHOR/DARLING MODEL 1878, DC-6006473-7 (45-B)
15. ANCHOR/DARLING #1878GB, DC-6006473-157 (42-E)
16. ANCHOR/DARLING 3/4"-1878GB, DC-6006473-97, S/C 94-2820 (42-E) (43-D) (44-B) (45-B)
17. BLANK FLANGE IS PG&E CODE CLASS "C" (47-D)
18. DELETED.
19. DELETED.
20. DELETED
21. VALVE, DWG.6006473-157, S/C 94-3771
22. DELETED

23. THE RO ASSEMBLY CONSISTS OF A PRESSURE REDUCING ORIFICE (PRO), A SWAGE TYPE REDUCER AND A FLOW BAFFLE PER DRAWING DC 663230-409
24. ANCHOR/DARING #1878 GB, S/C 95-5170 (41-C/D/E)
25. FOR LINE-7026- 1/16:  
PG&E S-SPECIFICATION WITH THE FOLLOWING SPECIAL REQUIREMENTS:  
- TUBING SIZE SHALL BE 1/16 INCH OD WITH WALL THICKNESS OF 0.020".  
- SEAMLESS STAINLESS STEEL TUBING MATERIAL GRADE TP304 MAY BE SUBSTITUTED FOR GRADE TP316. ALL OTHER REQUIREMENTS OF S-SPECIFICATION SHALL APPLY.  
- LENGTH OF LINE-7026- 1/16; 24 FEET ± 2 FEET (REF. DCP N-49631).
26. S2-7077-18 INDICATES SUCTION VOID HEADER (47-B)
27. MECHANICAL TRAVEL STOP INSTALLED ON VALVE 310 (41-B) TO LIMIT OPEN STEM TRAVEL (REF: DWG# 6011930-140, PAGE 3)
28. CONNECTION POINT FOR FLEX EQUIPMENT (43-D)

UNIT 1

SAFETY INJECTION SYSTEM

REF. DWG. DC-663216-1

DRAWING	SHEET	PAGE	REV
102009	4	0	83

02-03-2015	MNRU	Fxc2	KJD3	NOT REQUIRED PER CF3.1D5	-	-	-	REVISED PER DDN-2*1322
DATE	DWN	RE	IV	PROFESSIONAL ENGINEER	PE DISC.	PE#	PE EXP.	