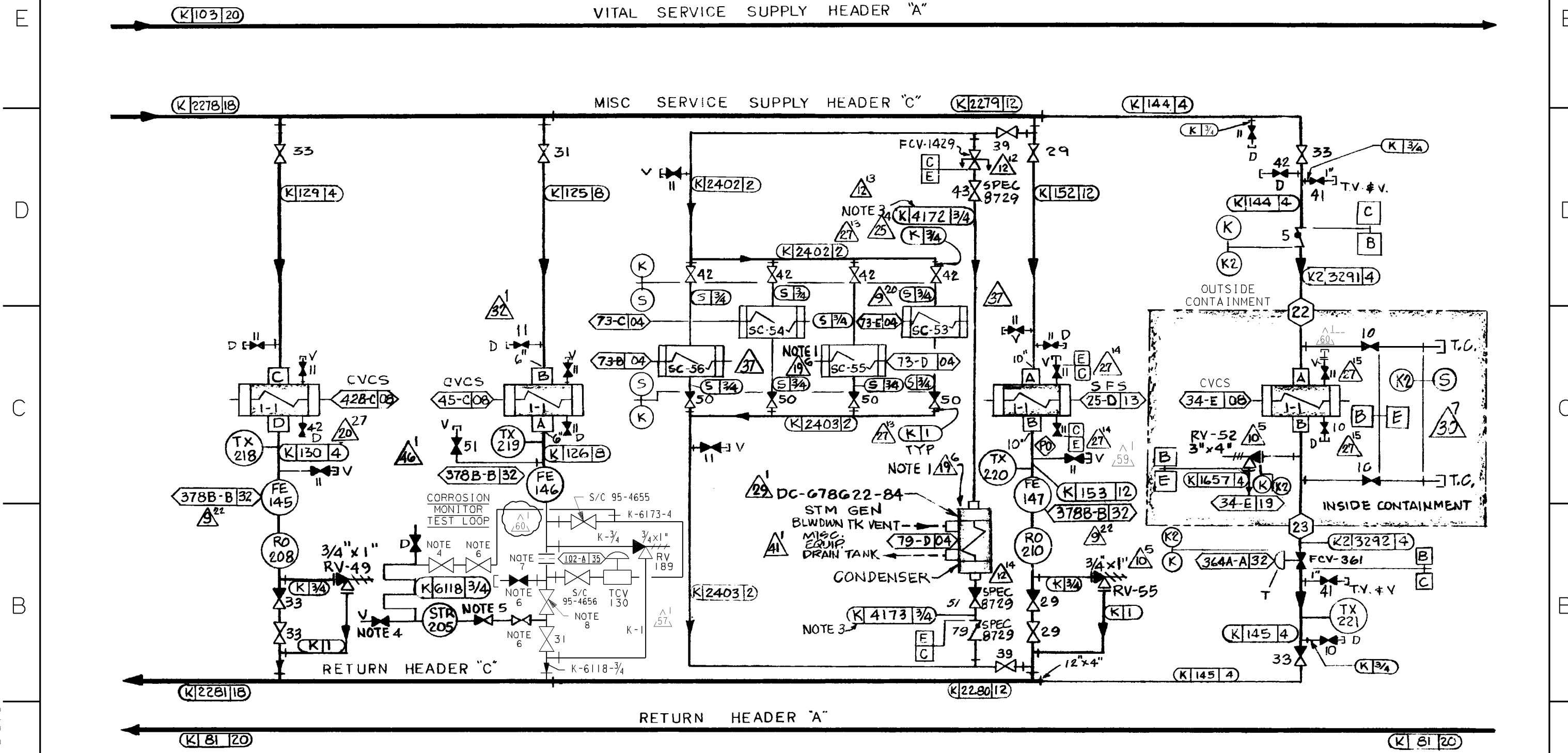


NOTES: 1. ST. GEN. BLOWDOWN SAMPLE COOLERS & COND. FOR SGBD TK VENT SAMPLE ARE DESIGN CLASS II & SEISMICALLY ANALYZED PER DESIGN CRITERIA MEMORANDUM T-10 (FORMERLY M-61) ⁴¹ ⁴⁶ ⁴¹ ⁴⁶
 2. DELETED ⁵⁹
 3. CODE CLASS E PORTIONS OF LINES 4172 & 4173 SHALL BE SEISMICALLY ANALYZED TO DESIGN CLASS I CRITERIA. ^{95-B,D}
 4. S/C 93-5909, DWG 6006473-8. ^{92-B}
 5. S/C 94-3774, DWG 6006473-141. ^{92-B}
 6. S/C 93-6841, DWG 6006473-166. ^{93-B}
 7. SOLID PLATE INSTALLED BETWEEN FLANGES TO DIVERT FLOW THROUGH TCY-130. ⁵⁷
 8. VALVE WAS ORIGINALLY PURCHASED AS TCY-130 AND IS NOW REDESIGNATED AS CCW-1-786 AS A MANUAL VALVE.



SEAL WATER HEAT EXCHANGER DC-663210-7

LETDOWN HEAT EXCHANGER DC-663210-11

STEAM GENERATOR BLOWDOWN SAMPLE COOLERS FOR RADIATION MONITORS DC-663095-1

SPENT FUEL PIT HEAT EXCHANGER DC-663211-7

EXCESS LETDOWN HEAT EXCHANGER DC-663210-12

UNIT 1

HEADER "C" COMPONENTS

DIABLO CANYON POWER PLANT - PG&E CO.			
COMPONENT COOLING WATER SYSTEM			
DRAWING	SHEET	PAGE	REV
102014	9	0	61

RASTER=001h1093.dgn
 DGN=001h1093.dgn
 CAD User: JBMX Date:04-25-2012

04-25-2012	JBMX	Fxc2		KERSI J. DALAL	MECHANICAL	M 16690	3/31/2014	REVISED PER DFT-7*1525
DATE	DWN	RE	IV	PROFESSIONAL ENGINEER	PE DISC.	PE#	PE EXP.	