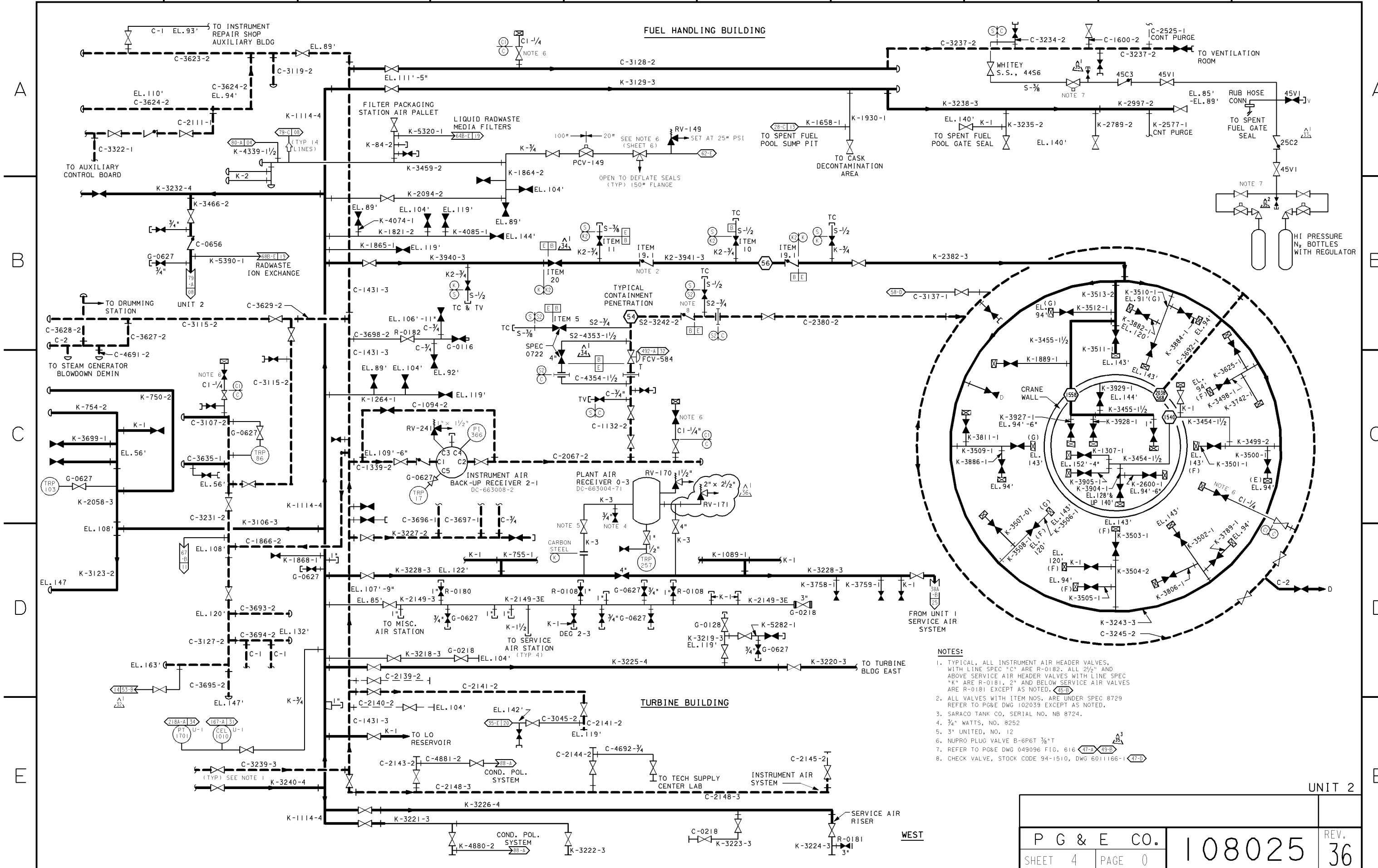


FUEL HANDLING BUILDING

TURBINE BUILDING



NOTES:

1. TYPICAL. ALL INSTRUMENT AIR HEADER VALVES, WITH LINE SPEC "C" ARE R-0182. ALL 2 1/2" AND ABOVE SERVICE AIR HEADER VALVES WITH LINE SPEC "K" ARE R-0181. 2" AND BELOW SERVICE AIR VALVES ARE R-0181 EXCEPT AS NOTED. (45-D)
2. ALL VALVES WITH ITEM NOS. ARE UNDER SPEC 8729 REFER TO PG&E DWG 102039 EXCEPT AS NOTED.
3. SARACO TANK CO, SERIAL NO. NB 8724.
4. 3/4" WATTS, NO. 8252
5. 3" UNITED, NO. 12
6. NUPRO PLUG VALVE B-6P6T 3/8" T
7. REFER TO PG&E DWG 049096 FIG. 616 (47-A) (49-D)
8. CHECK VALVE, STOCK CODE 94-1510, DWG 6011166-1 (47-D)

CAD User: rxg2 Date: 5-02-2002 DGN=8025S4.DGN

P G & E CO.		108025	REV. 36
SHEET 4	PAGE 0		

5/2/02	RXG2	RHSI	-	KERSI J. DALAL	MECHANICAL	M 16690	3/31/2004	Revised per FCT 026461
DATE	DWN	RE	IV	PROFESSIONAL ENGINEER	PE DISC.	PE#	PE EXP.	

INPGIC