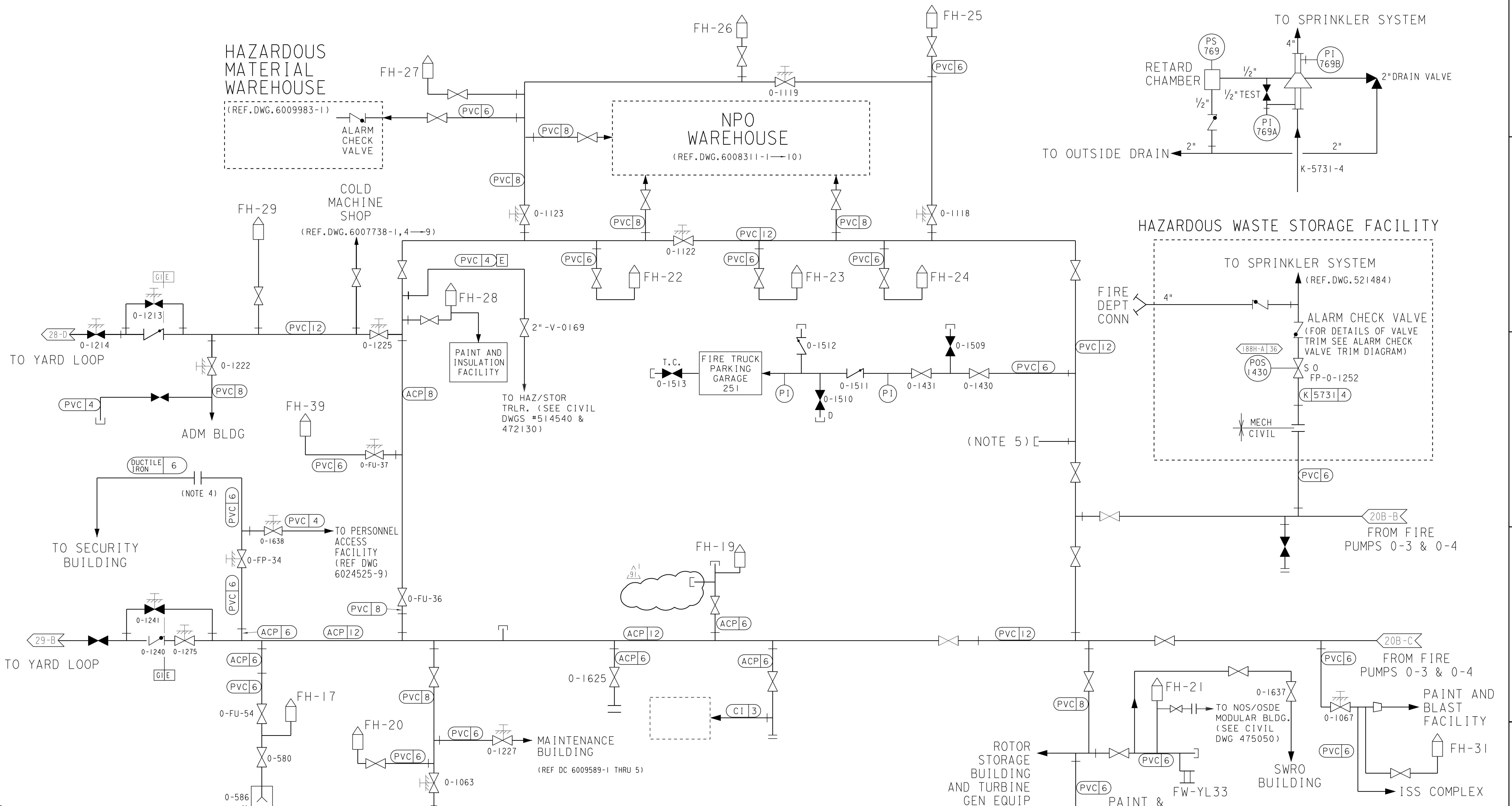


SOUTH SITE FIREWATER LOOP

ALARM CHECK VALVE TRIM DIAGRAM



NOTE

1. FOR CIVIL NOTES, SEE SHEET 2
2. ALL PIPING ON THIS SHEET IS PG&E CODE CLASS "E", EXCEPT AS NOTED
3. DELETED
4. 6" DUCTILE IRON ELBOW WITH ONE END MECHANICAL JOINT & OTHER END FLANGED
5. REMOVED HYDRANT FH-37, PIPING, & ASSOCIATED VALVES EXCEPT VALVES LISTED BELOW. VALVES 0-FU-20, 0-FU-31, 0-FU-32, AND 0-FU-33 ARE DELETED BUT REMAIN BURIED AS NONFUNCTIONAL COMPONENTS. INSTALLED CAP/PLUG AT TEE OF 12" LINE.

DIABLO CANYON POWER PLANT - PG&E CO.			
FIRE PROTECTION SYSTEMS			
DRAWING	SHEET	PAGE	REV
102018	2A	0	91

08-14-2019	ZNS4	FXC2	N/A	NOT REQUIRED PER CF3.1D5	-	-	-	Revised Per DDN-2*1905
DATE	DWN	RE	IV	PROFESSIONAL ENGINEER	PE DISC.	PE#	PE EXP.	

RASTER=102018-2A-0.dgn
 DGN=102018-2A-0.dgn
 CAD User: ZNS4 Date: 08-14-2019