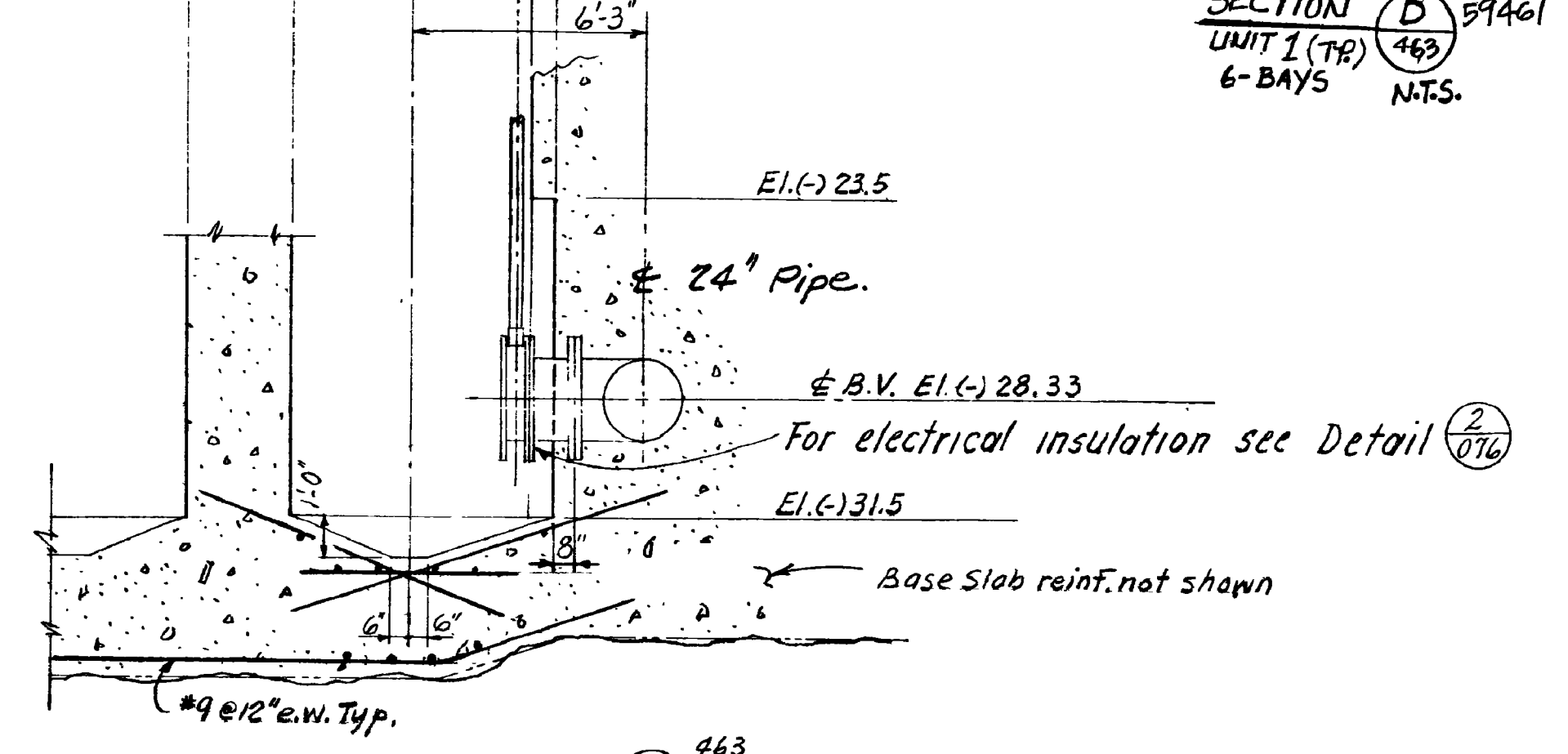
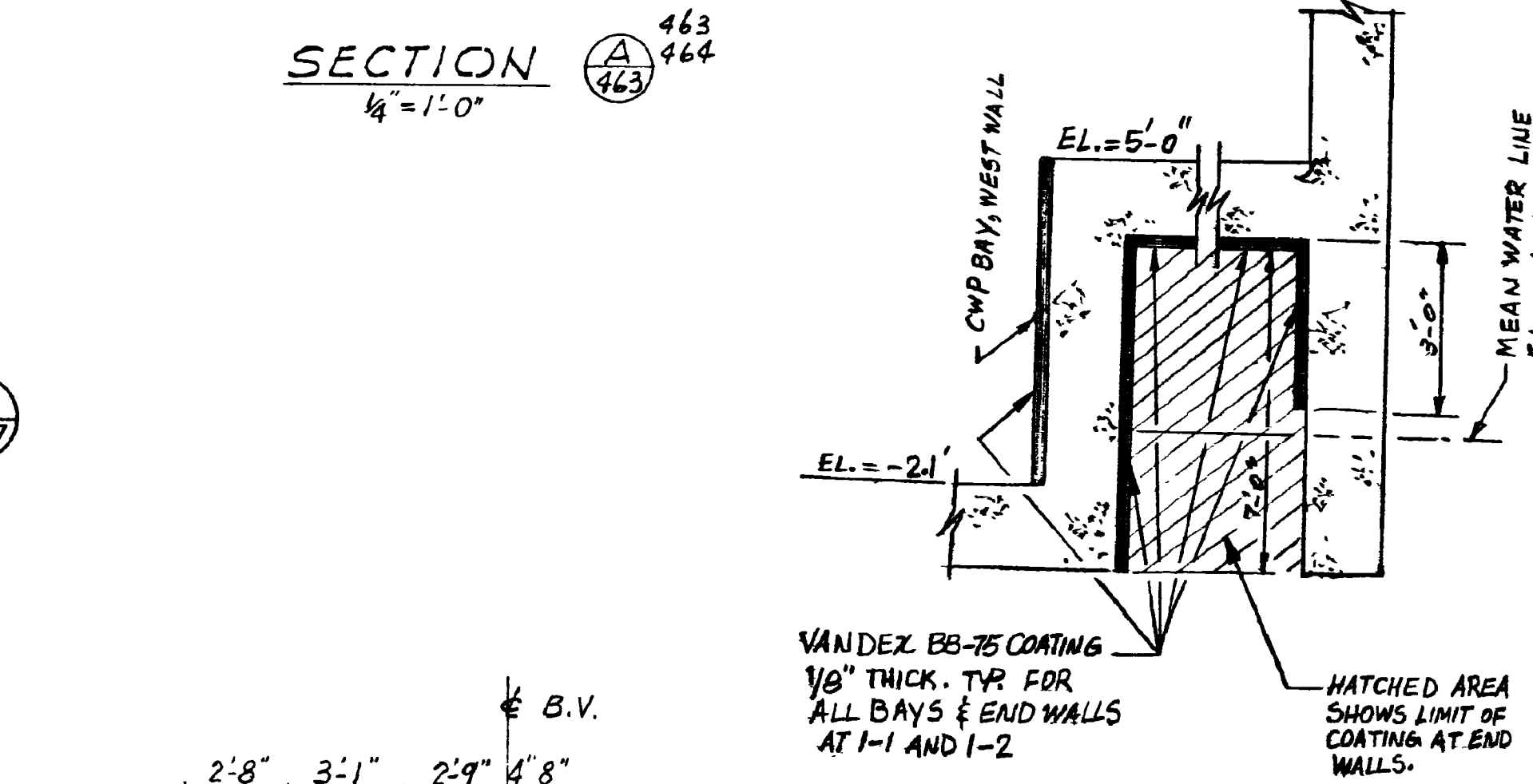
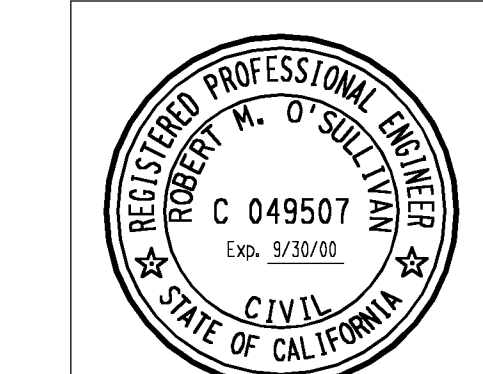
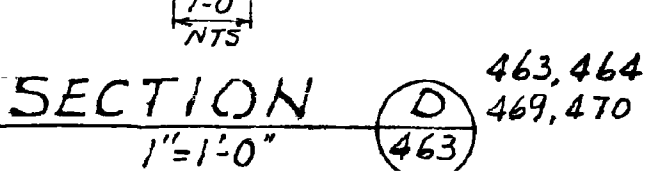


APPLIED FOUL RELEASE COATING TO WALLS AND CROWN TO A HEIGHT OF 15'. THE INVERT WAS NOT COATED. FOUL-RELEASE COATING PER SPEC. 1016-A-NPG SEE DWG. 438051. SECTION A-1 FOR COATING HEIGHT. SIMILAR FOR WATER PUMP I-2 INTAKE.



NOTE:
 For Additional Reference Drawings see Dwg. List. 438050. Minimum thickness of all exterior walls to be 3'-0" unless otherwise noted, excluding undercut defined in Note 6 Dwg. 59471.

- REFERENCE**
- Invert Area 1 Reinf. - - - - - 59469
 - Cathodic Protection - - - - - 438076
 - Pipe Spools - - - - - 57743
 - Misc. Concrete Sections & Details - - - - - 438082
 - Pump Foundation - - - - - Record Dwg. DC-663021-13



DATE: 5/26/98		DESCRIPTION	COORDINATION	UNIT 1 & 2	
DWN.	MDV5	Revised per DCI-SA-049234-00	NUCL.	CIVIL	
R.E.	GKV1		MECH.	CONCRETE OUTLINE	
TNDP.	RM02		ELEC.	PLAN AT INVERT AREA 1	
VERIFY.	RM02		CIVIL	INTAKE STRUCTURE	
P.E.	RM02		PIPING		
			IBC		
REVISION INFORMATION			DWG SCALE		
			BILL OF MATL		
			SUPERVISOR		
			SHEP BY		
			SHEET NO. 1 OF		
			PACIFIC GAS AND ELECTRIC COMPANY		
			SAN FRANCISCO, CALIFORNIA		
			59463		