

A

B

C

D

A

B

C

D

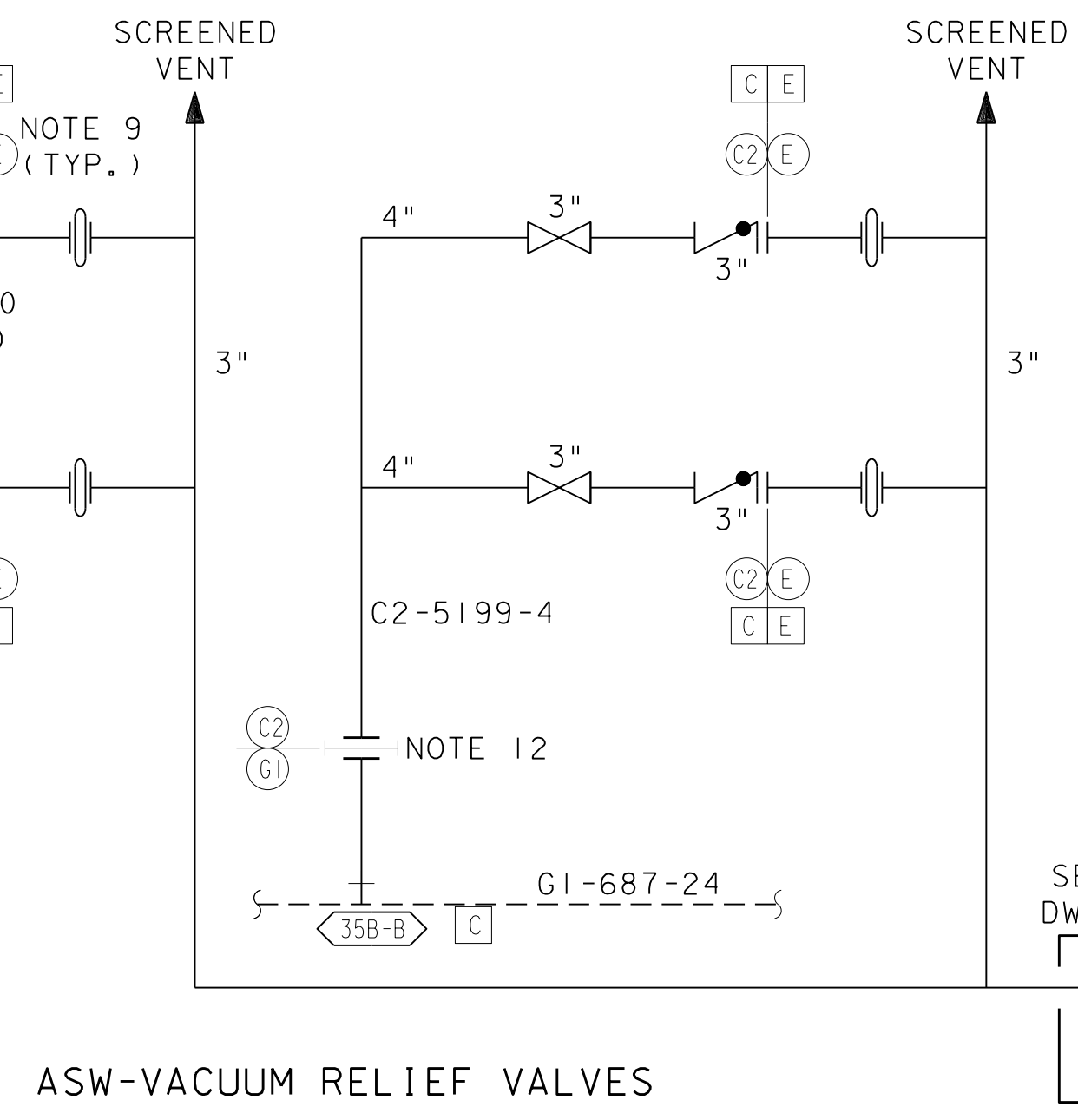
E

UNIT 1 AUX. SALTWATER PUMPS

AUXILIARY SALTWATER PUMPS
DC-663030-1

AUXILIARY SALTWATER SYSTEM

COMPONENT COOLING
WATER HEAT EXCHANGERS
DC-663212-41&42



ASW-VACUUM RELIEF VALVES

SEE CIVIL
DWG 438094
SUMP

NOTES:

- PORTIONS OF LINES G1-680-24 AND G1-687-24 IN THE INVERT AREA ARE INSULATED WITH 1" THICK ARMSTRONG "ARMAFLEX 11", AND PORTIONS OF LINES G2-6158-24 & G2-6159-24 ARE COATED WITH STACKWRAP COATING IN THE INVERT AREA. SEE DWG. 425852. (33B-A) (33B-C)
- 1 1/2" CONTRAMATICS BALL VALVE WITH 4" FLANGE. SEE (DWG. 6006473-216 OR SW-2-864) (35B-A) (35B-C) (DWG. 6011930-70 FOR SW-2-865)
- USE PIPE SPECIFICATION "MI" (36B-A/C)
- ALL S.S. 3/4" AUTOMATIC AIR VENT ARMSTRONG NO. 11-AV OR APPROVED EQUAL (33B-B)
- VALVES WITH ITEM NUMBERS FALL UNDER SPEC. 8729, UNLESS REFERRED TO NOTE 15. (39B-B)
- 24" C&S CHECK VALVE, SEE DC-6006473-160 (32B-A) (32B-C)
- FOR PROVISIONS FOR LONG TERM COOLING WATER SEE DWGS. 107031 AND DC-663212-11 & 38 (36B-C) (36B-B)
- GARLOCK STYLE 204 HP, S/C 94-5753 (35B-C) (37B-C) (37B-A) (35B-A) (SEE DC-663323-14)
- SPEC E PIPE THREADS INTO A STAINLESS STEEL FLANGE, WHICH IS CONSIDERED PART OF THE SEISMIC SUPPORT AT THE VACUUM BREAKER INLET (31B-D)
- FOR 3"-150# FLANGED ENDS ALUMINUM BRONZE SWING CHECK VALVE WITH VACUUM BREAKER SEE DC-663313-47 AND DC-663313-57. (31B-D)
- FOR 3"-150# FLANGED ENDS ALUMINUM BRONZE FLEX WEDGE GATE VALVE WITH 10" DIA. HANDWHEEL SEE DC-663313-48. (30B-D)
- FLAT FACE FLANGES ON LINES 5198 & 5199 TO HAVE RUBBER GASKETS ONLY. (30B-E)
- ALL PIPES ON THIS SHEET ARE PG&E CLASS "C" UNLESS OTHERWISE NOTED
- REFER TO PG&E DRAWING 053094 SH.6 FOR DETAILS ON INSULATING (DIELECTRIC) FLANGE ASSEMBLY INSTALLATION AT THESE LOCATIONS (32B-A) (32B-C)

-NOTES CONTINUED AT LEFT-

NOTES: CONTINUATION

- VALVES REFERRED TO THIS NOTE FALL UNDER SPEC.0722 (38B-B/C) (39B-B)
- 24" DIELECTRIC 150# INSULATION KIT (STOCK CODE #95-0523) EXCEPT EXISTING FLANGE GASKET RETAINED (35B-A) (35B-C)
- PIPE SB/B-675 STOCK CODE #95-0171, FLANGE SB/B-462 STOCK CODE #95-0170 (35B-A) (35B-C)
- FE-500 AND FE-501 ARE ULTRASONIC FLOWMETERS THAT HAVE BEEN STRAPPED ONTO THE OUTSIDE OF THE ASW PIPES. (34B-A) (34B-C)
- GARLOCK STYLE 204HP, S/C 95-2341, SEE DC-663323-24. (32B-B)
- T1-186 & T1-187 CAN BE REMOVED TEMPORARILY & RTD'S CAN BE INSTALLED FOR TESTING. (37B-A) (37B-C)

UNIT 2

DIABLO CANYON POWER PLANT - PG&E CO.
SALTWATER SYSTEM

DRAWING	SHEET	PAGE	REV
108017	3B	0	84

RASTER=108017-3B-0-.dgn
 DGN=108017-3B-0.dgn
 CAD User: ZNS4 Date: 01-31-2020