

SPACE REQUIRED TO REMOVE EXCHANGER CASING

1/2" NIPPLE - PLAIN END - VENT - CUST.'S CONN.

COMPONENT COOLING WATER SUPPLY & RETURN HEADER TYPICAL

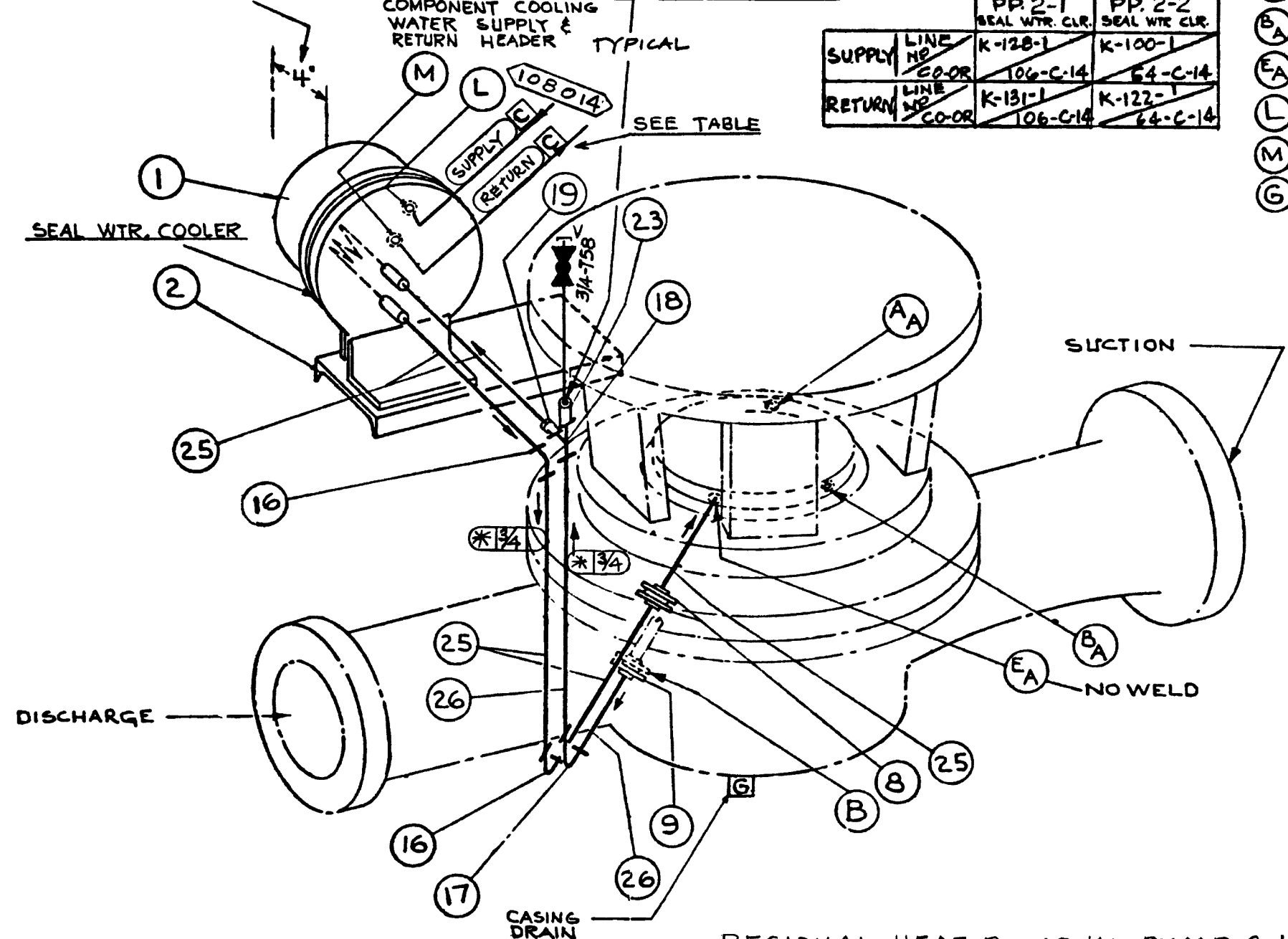
		R.H.R PP 2-1 SEAL WTR. CLR.	R.H.R PP 2-2 SEAL WTR. CLR.
SUPPLY	LINE NO.	K-128-1	K-100-1
	CO-OR	106-C-14	64-C-14
RETURN	LINE NO.	K-131-1	K-122-1
	CO-OR	106-C-14	64-C-14

SEE TABLE

- (B) 1/2" - 300# RAISED FACE FLANGE - PUMPING RING OUTLET - PIPED TO HEAT EXCHANGER [PRESSURE DROP 1 PSI]
- (AA) 1/2" P.T. - VENT OR QUENCH
- (BA) 1/2" P.T. - DRAIN (GLAND DRAIN)
- (EA) 1/2" P.T. - FLUSHING CONN. - PIPED FROM HEAT EXCHANGER
- (L) 1/2" P.T. - COOLING LIQUID - IN
- (M) 1/2" P.T. - COOLING LIQUID - OUT
- (G) 1" 300# RF. FLANGE - CASING DRAIN

HEAT EXCHANGER 10 G.P.M. REQUIRED

DYE PENETRATE TEST REQUIRED. ALL SEALWELDS PER PT ASME-3 NO POSTWELD HEAT TREATMENT REQUIRED.



RESIDUAL HEAT REMOVAL PUMP 2-1
SHAFT SEAL (TYP); REF DWG DC-663217-25

RECIRCULATION OF LIQUID FROM SEAL WITH PUMPING RING - THRU COOLER & BACK TO SEAL.

CAD User: RXG2 Date: 10-06-2000
DGN=801054.DGN
RASTER=801054.TIF

PG & E CO.		108010	REV. 16
SHEET 4	PAGE 0		

UNIT 2

10/6/00	RXG2	NDNI	-	KERSI J. DALAL	MECHANICAL	M 16690	3/31/2004	Revised per FCT 025183
DATE	DWN	RE	IV	PROFESSIONAL ENGINEER	PE DISC.	PE#	PE EXP.	

INPGIC