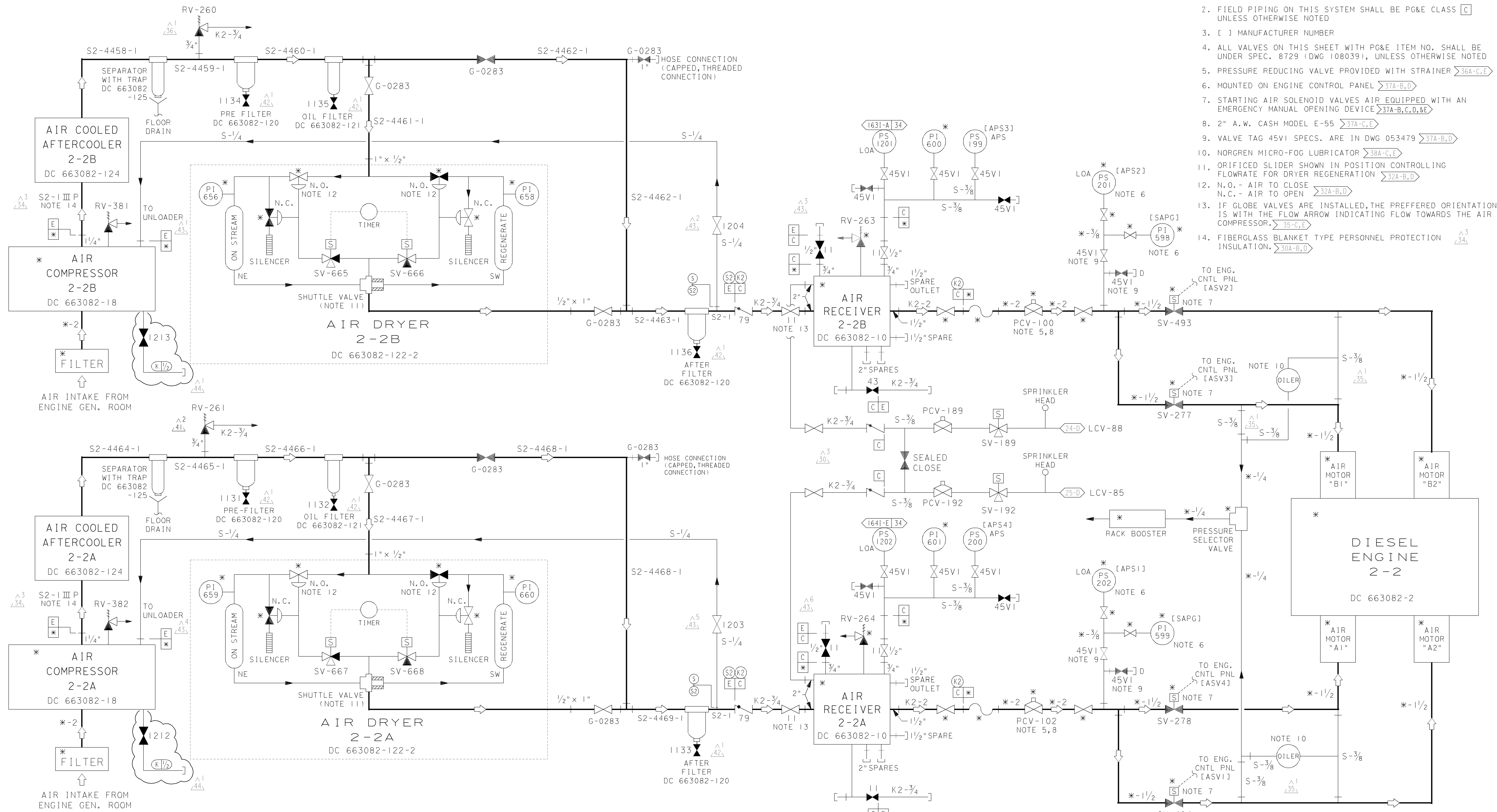


- NOTES:
- * DENOTES MANUFACTURER SUPPLIED INSTRUMENTS & EQUIPMENT. IT IS ACCEPTABLE TO REPLACE MANUFACTURER SUPPLIED INSTRUMENT TUBING WITH PG&E SUPPLIED S-SPEC STAINLESS STEEL TUBING
 - FIELD PIPING ON THIS SYSTEM SHALL BE PG&E CLASS [C] UNLESS OTHERWISE NOTED
 - [] MANUFACTURER NUMBER
 - ALL VALVES ON THIS SHEET WITH PG&E ITEM NO. SHALL BE UNDER SPEC. 8729 (DWG 108039), UNLESS OTHERWISE NOTED
 - PRESSURE REDUCING VALVE PROVIDED WITH STRAINER >36A-C,E
 - MOUNTED ON ENGINE CONTROL PANEL >37A-B,D
 - STARTING AIR SOLENOID VALVES AIR EQUIPPED WITH AN EMERGENCY MANUAL OPENING DEVICE >37A-B,C,D,E
 - 2" A.W. CASH MODEL E-55 >37A-C,E
 - VALVE TAG 45VI SPECS. ARE IN DWG 053479 >37A-B,D
 - NORGREN MICRO-FOG LUBRICATOR >38A-C,E
 - ORIFICED SLIDER SHOWN IN POSITION CONTROLLING FLOWRATE FOR DRYER REGENERATION >32A-B,D
 - N.O. - AIR TO CLOSE
N.C. - AIR TO OPEN >32A-B,D
 - IF GLOBE VALVES ARE INSTALLED, THE PREFERRED ORIENTATION IS WITH THE FLOW ARROW INDICATING FLOW TOWARDS THE AIR COMPRESSOR. >35-C,E
 - FIBERGLASS BLANKET TYPE PERSONNEL PROTECTION INSULATION. >30A-B,D



STARTING AIR SYSTEM 2-2

REFERENCE MFR. DWG. DC-663082-5

DIABLO CANYON POWER PLANT - PG&E CO.
DIESEL ENGINE-GENERATOR ASSOCIATED SYSTEMS

DRAWING	SHEET	PAGE	REV
108021	3A	0	44

UNIT 2

10-10-2011	AJFJ	RxG2	KERSI J. DALAL	MECHANICAL	M 16690	3/31/2012	REVISED PER DFT-7*1303
DATE	DWN	RE	PROFESSIONAL ENGINEER	PE DISC.	PE*	PE EXP.	

RASTER=8021.s3a.dgn
 DGN=8021.s3a.dgn
 CAD User: AJFJ Date: 10-10-2011