

50A

51A

52A

53A

54A

55A

56A

57A

58A

59A

E

D

C

B

A

E

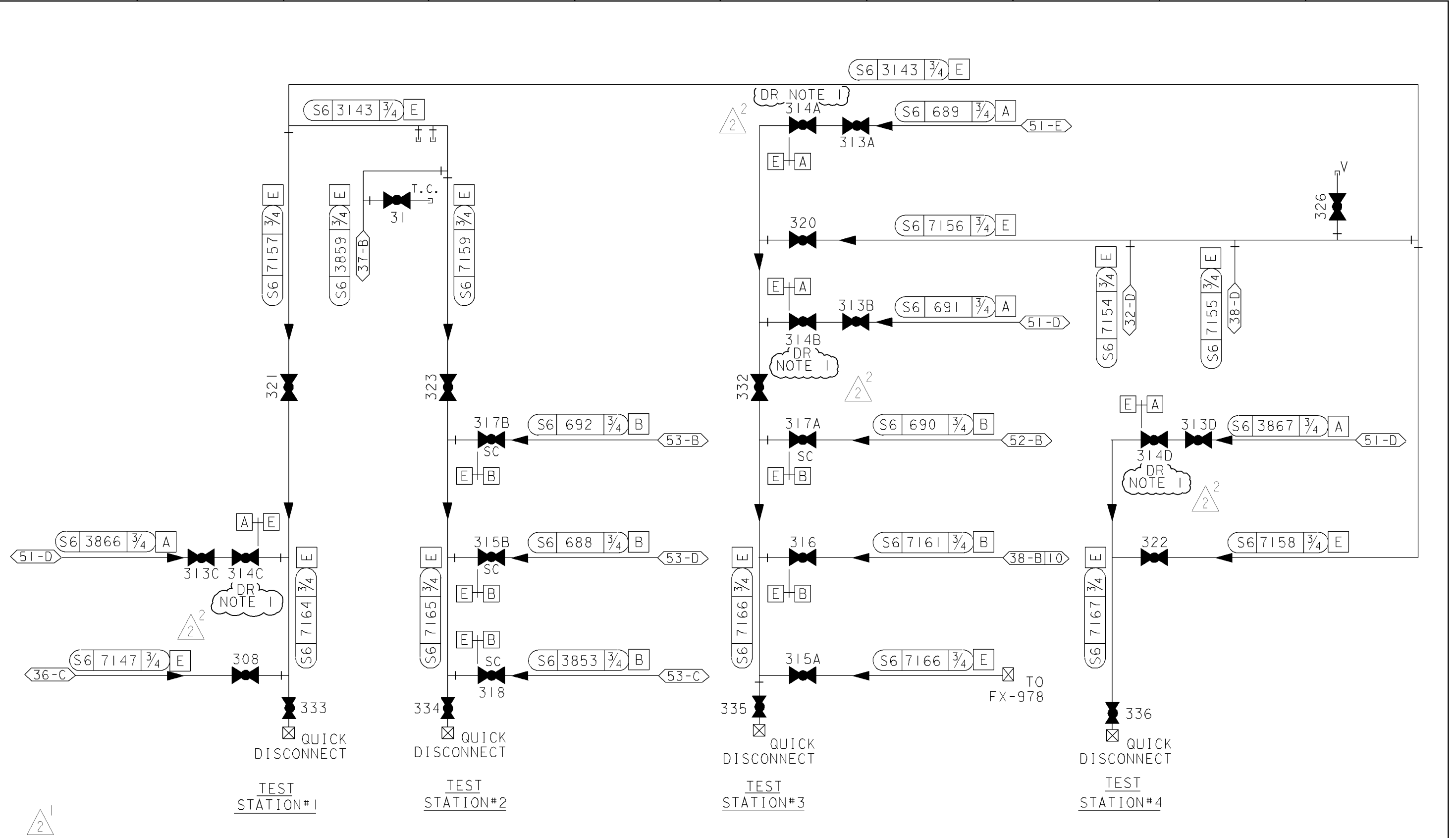
D

C

B

A

RASTER=108009s5a.dgn
DGN=108009s5a.dgn
CAD User: AJFJ Date:05-16-2011



NOTE:
1. MECHANICAL TRAVEL STOP INSTALLED ON VALVES 314A-D TO LIMIT OPEN STEM TRAVEL (REF: DWG# 6011930-140, PAGE 3)

UNIT 2

DIABLO CANYON POWER PLANT - PG&E CO.			
SAFETY INJECTION SYSTEM			
DRAWING	SHEET	PAGE	REV
108009	5a	0	2

INPG2ND
1 Size

05-16-2011	AJFJ	Fxc2		KERSI J. DALAL	MECHANICAL	M 16690	3/31/2012	REVISED PER DDN-2*704
DATE	DWN	RE	IV	PROFESSIONAL ENGINEER	PE DISC.	PE#	PE EXP.	