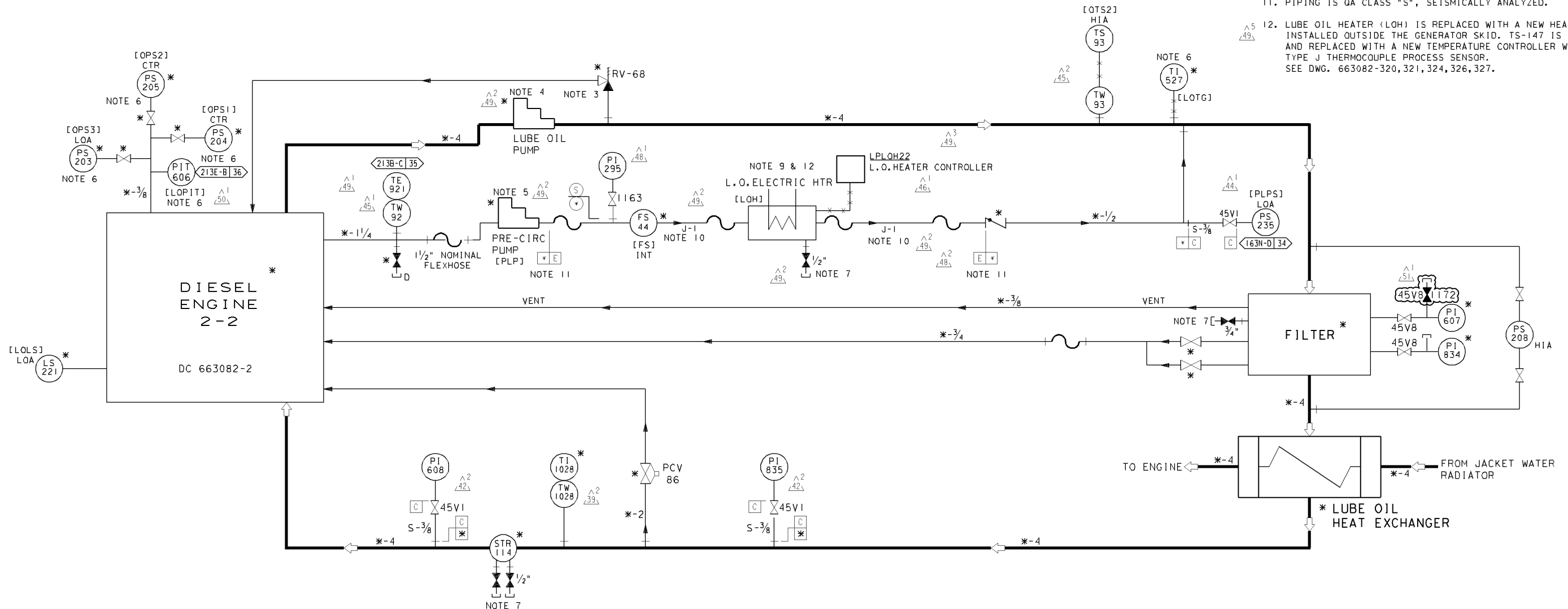


- NOTES:
- THIS SYSTEM PROVIDED COMPLETELY INSTALLED WITH ENGINE-GENERATOR UNITS
 - [] MANUFACTURER NUMBER
 - RELIEF VALVE BUILT-IN TO PUMP >74A-B
 - ENGINE DRIVEN LUBE OIL PUMP >73A-B
 - PRE-CIRC. L.O. PUMP IS ELECTRIC MOTOR DRIVEN >73A-C
 - MOUNTED ON ENGINE CONTROL PANEL >71A/77A-B,79A-C
 - BALL VALVES CONTRONATICS #C-1111-BC, DC-6006473-217. >75A/77A-C,73A-D
 - * DENOTES MANUFACTURER SUPPLIED INSTRUMENTS AND EQUIPMENT. IT IS ACCEPTABLE TO REPLACE MANUFACTURER SUPPLIED INSTRUMENT TUBING WITH PG&E SUPPLIED S-SPEC STAINLESS STEEL TUBING
 - WATLOW PART#7-10-567-1
 - J-SPEC PIPING MAY BE PROVIDED WITH THREADED CONNECTIONS AND PIPE FITTINGS PER RPE #P-6697.
 - PIPING IS QA CLASS "S", SEISMICALLY ANALYZED.
 - LUBE OIL HEATER (LOH) IS REPLACED WITH A NEW HEATER AND INSTALLED OUTSIDE THE GENERATOR SKID. TS-147 IS DELETED AND REPLACED WITH A NEW TEMPERATURE CONTROLLER WITH TYPE J THERMOCOUPLE PROCESS SENSOR. SEE DWG. 663082-320, 321, 324, 326, 327.



LUBE OIL SYSTEM 2-2
REFERENCE MFR. DWG. DC 663082-16

UNIT 2

DIABLO CANYON POWER PLANT - PG&E CO.			
DIESEL ENGINE-GENERATOR ASSOCIATED SYSTEM			
DRAWING	SHEET	PAGE	REV
108021	7A	0	51

04-01-2010	CNHK	FxC2	KERSI J. DALAL	MECHANICAL	M 16690	3/31/2012	REVISED PER DAS-6*299
DATE	DWN	RE	PROFESSIONAL ENGINEER	PE DISC.	PE#	PE EXP.	

RASTER=8021571.DGN
 DGN=8021571.DGN
 CAD User:CNHK Date: 04-01-2010