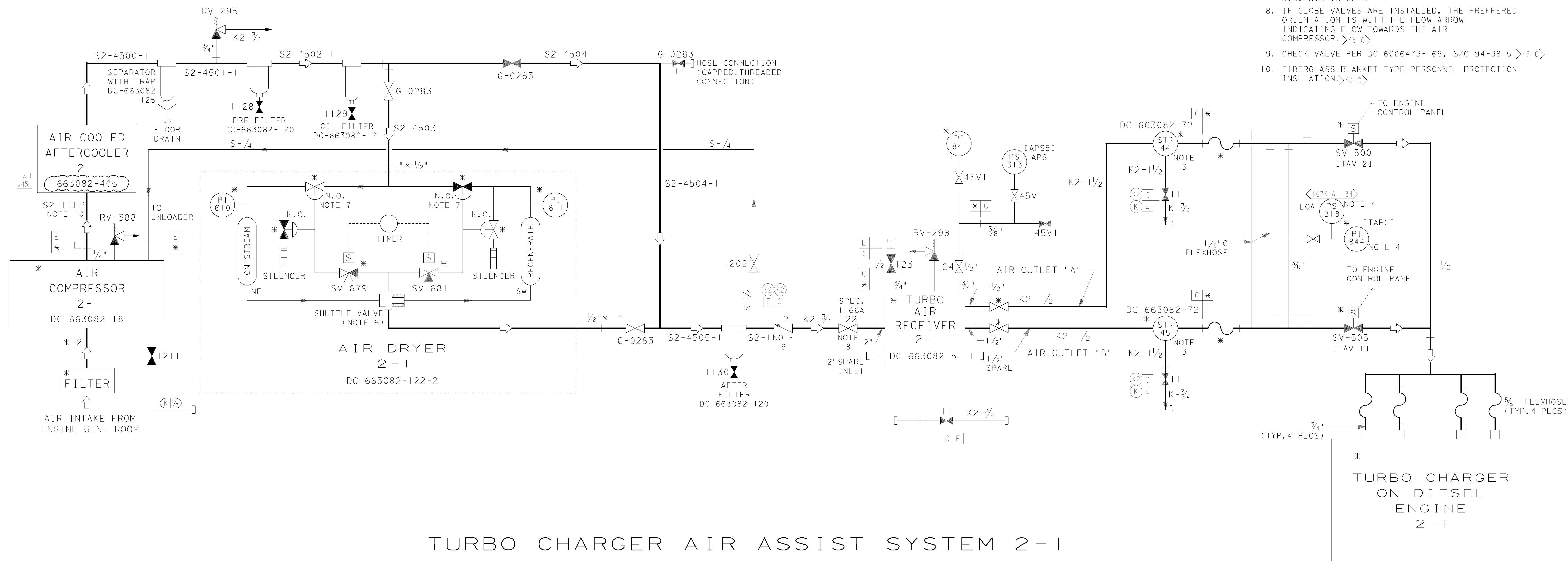
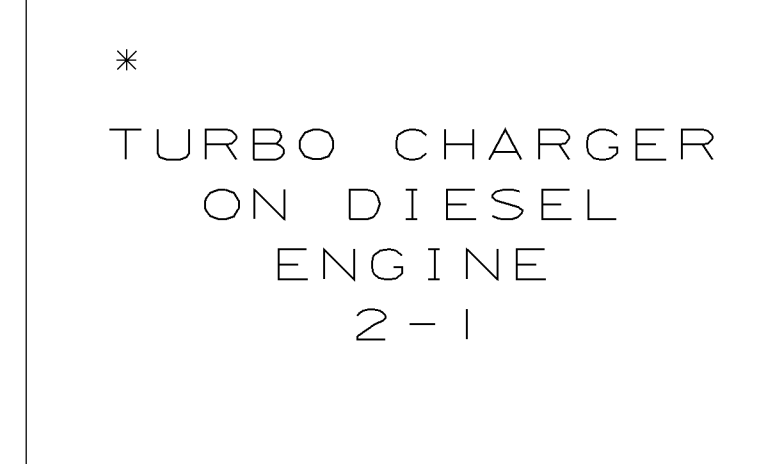


- NOTES:
- * DENOTES MANUFACTURER SUPPLIED INSTRUMENTS & EQUIPMENT. IT IS ACCEPTABLE TO REPLACE MANUFACTURER SUPPLIED INSTRUMENT TUBING WITH PG&E SUPPLIED S-SPEC STAINLESS STEEL TUBING
 - FIELD PIPING ON THIS SYSTEM SHALL BE PG&E CLASS C UNLESS OTHERWISE NOTED
 - AIR RECEIVER OUTLET STRAINERS BE INSTALLED HORIZONTALLY 47-B,C
 - MOUNTED ON ENGINE CONTROL PANEL 48-C
 - ALL VALVES ON THIS SHEET WITH PG&E ITEM NOS. SHALL BE UNDER SPEC. 8729 (DWG 108039), UNLESS OTHERWISE NOTED 45-C&D
 - ORIFICED SLIDER SHOWN IN POSITION CONTROLLING FLOWRATE FOR DRYER REGENERATION. 42-C
 - N.O. AIR TO CLOSE 42-C
N.C. AIR TO OPEN 42-C
 - IF GLOBE VALVES ARE INSTALLED, THE PREFERRED ORIENTATION IS WITH THE FLOW ARROW INDICATING FLOW TOWARDS THE AIR COMPRESSOR. 45-C
 - CHECK VALVE PER DC 6006473-169, S/C 94-3815 45-C
 - FIBERGLASS BLANKET TYPE PERSONNEL PROTECTION INSULATION. 40-C



TURBO CHARGER AIR ASSIST SYSTEM 2-1

REFERENCE MFR. DWG. DC-663082-31



UNIT 2

DIABLO CANYON POWER PLANT - PG&E CO.
DIESEL ENGINE-GENERATOR ASSOCIATED SYSTEMS

DRAWING	SHEET	PAGE	REV
108021	4	0	45

08-25-2015	ZNS4	Fxc2	RxG2	NOT REQUIRED PER CF3.1D5	-	-	-	REVISED PER DFT-7*3234
DATE	DWN	RE	IV	PROFESSIONAL ENGINEER	PE DISC.	PE#	PE EXP.	

RASTER=108021.us4.dgn
 DGN=108021.us4.dgn
 CAD User: ZNS4 Date: 08-25-2015