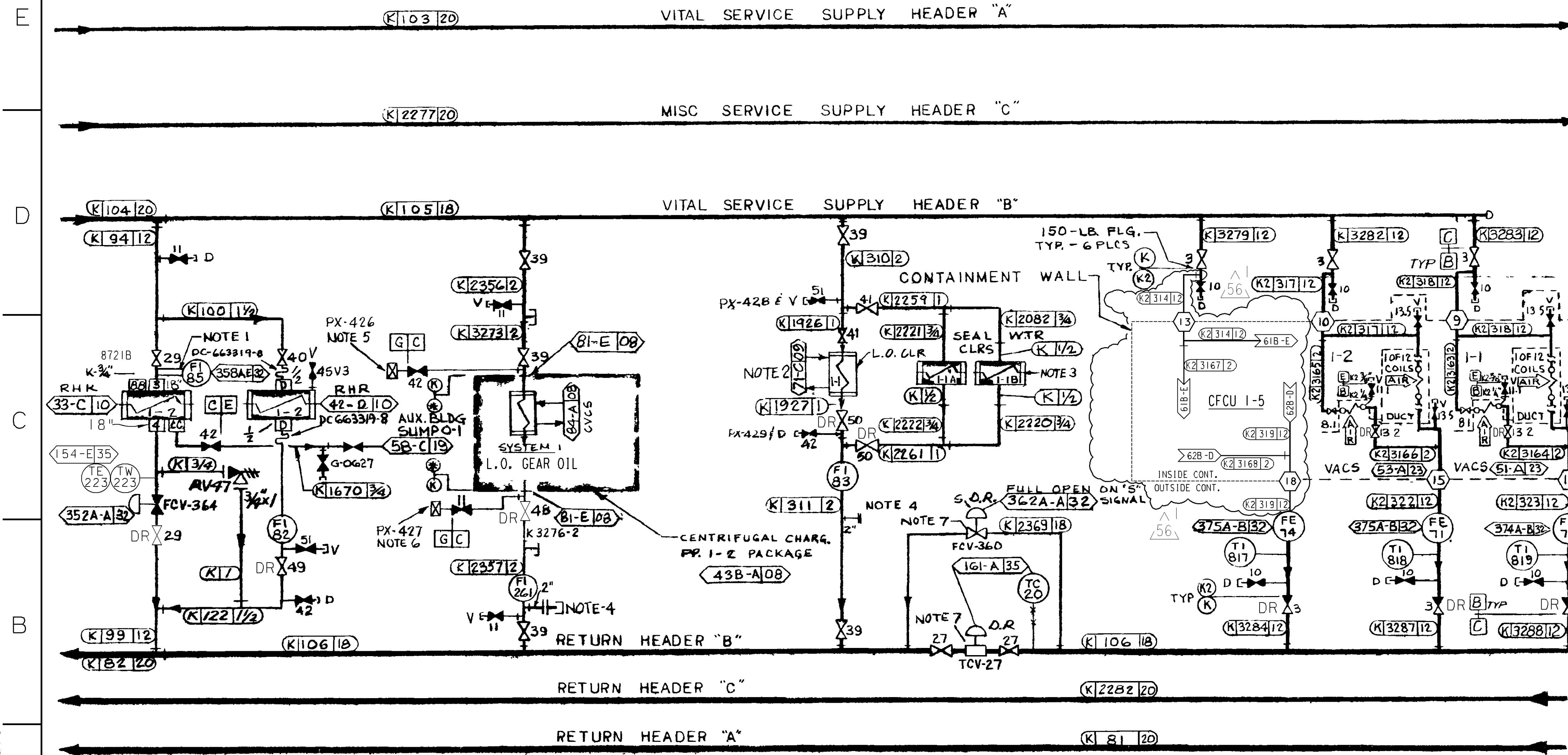


NOTES CONT: 5. DRAIN W/ QUICK-DISCONNECT COUPLING W/ INTEGRAL CHECK VALVE FOR EMERGENCY TIE-IN TO FIRE PROTECTION SYS (102018-5A). COUPLING TO BE REMOVED WHEN DRAINING IS REQUIRED.
 6. DRAIN W/ QUICK-DISCONNECT COUPLING W/ INTEGRAL CHECK VALVE. DRAIN HOSE TO BE ATTACHED FOR ROUTING FLOW TO FLOOR DRAINS WHEN FPS TIE-IN (NOTE 5) IS OPERATIONAL. COUPLING TO BE REMOVED WHEN DRAINING IS REQUIRED

7. THE INSTRUMENT AIR TO FCV-360 AND TCV-27 HAS BEEN ISOLATED. BOTH VALVES ARE FULLY OPEN. 66-B



RESIDUAL H.X. I-2 DC-663217-4	RES HEAT REM. PP I-2 SEAL WTR. CLR. DC-663217-9,16	CENTRIFUGAL CHARGING PUMP I-2 PACKAGE CLRS. DC-663210-40, 47, 48, 49, 50	SAFETY INJECTION PP I-1 COOLER DC-663216-26, 32	REACTOR CONTAINMENT FAN COOLERS DC-663079-2,5 UNIT I CLG. COILS FAN MTRS. H.X.
----------------------------------	---	--	---	---

- NOTES:**
- ELBOW TAPS FOR FLOW INDICATION. 60-D
 - REFER TO S.I.S. PUMP LUBE OIL COOLING SYSTEM, PG.#E RECORD NO. DC-663216-26 65-C
 - REFER TO SIS PP. SEAL FLUSH SYSTEM DIAGRAM, DC 663212 27 66-C

HEADER 'B' COMPONENTS

4. TEST POINT, SEE NOTES 2 & 3 SHT-5A COORD C3-B.
 -NOTES CONT ABOVE-

DIABLO CANYON POWER PLANT - PG&E CO. COMPONENT COOLING WATER SYSTEM			
DRAWING 102014	SHEET 6	PAGE 0	REV 56

RASTER=102014s6.dgn
 DGN=102014s6.dgn
 CAD User: ZNS4 Date:06-08-2017

INPGIC 1 Size	06-08-2017	ZNS4	Fxc2	N/A	NOT REQUIRED PER CF3.ID5	-	-	-	REVISED PER DDN-2*1425
	DATE	DWN	RE	IV	PROFESSIONAL ENGINEER	PE DISC.	PE#	PE EXP.	