

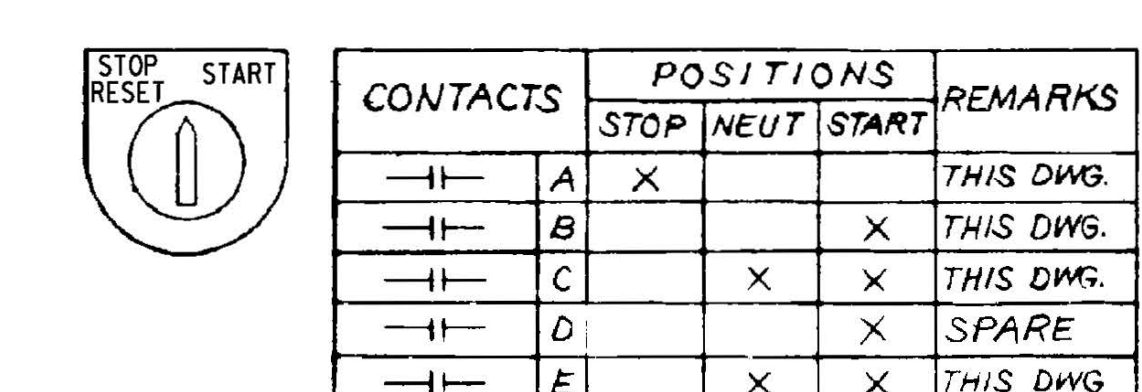
CONTACTS	POSITIONS			REMARKS
	A	B	C	
1-1-1C	X	X	X	THIS DWG
2-1-1C	X	X	X	THIS DWG
3-1-1C	X	X	X	THIS DWG
4-1-1C	X	X	X	THIS DWG
5-1-1C	X	X	X	THIS DWG
6-1-1C	X	X	X	THIS DWG
7-1-1C	X	X	X	THIS DWG
8-1-1C	X	X	X	THIS DWG
9-1-1C	X	X	X	THIS DWG
10-1-1C	X	X	X	THIS DWG
11-1-1C	X	X	X	THIS DWG
12-1-1C	X	X	X	THIS DWG

CONTACTS	POSITIONS			REMARKS
	TRIP	TRIP	CLOSE	
1-1-1C	X	X	X	THIS DWG
2-1-1C	X	X	X	THIS DWG
3-1-1C	X	X	X	THIS DWG
4-1-1C	X	X	X	THIS DWG
5-1-1C	X	X	X	THIS DWG
6-1-1C	X	X	X	THIS DWG
7-1-1C	X	X	X	THIS DWG
8-1-1C	X	X	X	THIS DWG
9-1-1C	X	X	X	THIS DWG
10-1-1C	X	X	X	THIS DWG
11-1-1C	X	X	X	THIS DWG
12-1-1C	X	X	X	THIS DWG

DEVICE NO	FUNCTION	RATING	MFR	TYPE	CAT./DWG. NO	REMARKS
YM200A	SIGNAL CONDITIONER	5W	ACTON	INST	102038	
YM201A	SIGNAL ISOLATOR	5W	ACTON	INST	102038	
27DC1-20	DC CONTROL BUS UNDERVOLTAGE REL.	125V DC	AGASTAT	EGPD		
27DC20	DC CONTROL BUS UNDERVOLTAGE REL.	125V DC	G.E. Co.	HGA	(6), (7)	TRIPS ON UNDERVOLTAGE & TRANSFER TO DIESEL
27AC1, 2, 3	120V INSTR. AC UV AUX. RELAY	120V AC	C-H	POWERED	D40RR11A	
43HG8, 43HH1	CONTROL TRANSFER SWITCH	125V DC	ELECTRO	SWITCH	24	24907B-2
62HG8, HH1	BKR CLOSING SPRING TIME DELAY REL	125V DC	AGASTAT	ETK		
50NHG8, HH1	GROUND OVERCURRENT SENSOR				(3), (11)	ALARM ONLY
51HG8, HH1	OVERCURRENT RELAY				(3)	
52HG8, HH1	OVERCURRENT AUXILIARY RELAY	24V DC	G.E. Co.	HFA		
52HG8, HH1	CIRCUIT BREAKER				(3)	REC NO 600983B
52HG8, HH1	CIRCUIT BKR AUX SWITCH					PART OF SWGR
52HG8, HH1	CIRCUIT BKR CELL INTLK					PART OF SWGR
POS62, 63A	CNT SUMP RECIRC. VALVE POS SW					CLOSE WHEN VALVE IS FULLY CLOSED OPEN WHEN VALVE IS OPENED (REC)
LS921, 922	RWST LOW LEVEL SW		MOORE	CPT	HLPRG	CLOSES ON LOW LVL NON-FAIL SAFE
LS921X1, 2	RWST LOW LEVEL AUX RELAY	120V AC	C-H	POWERED	D40RR40A	

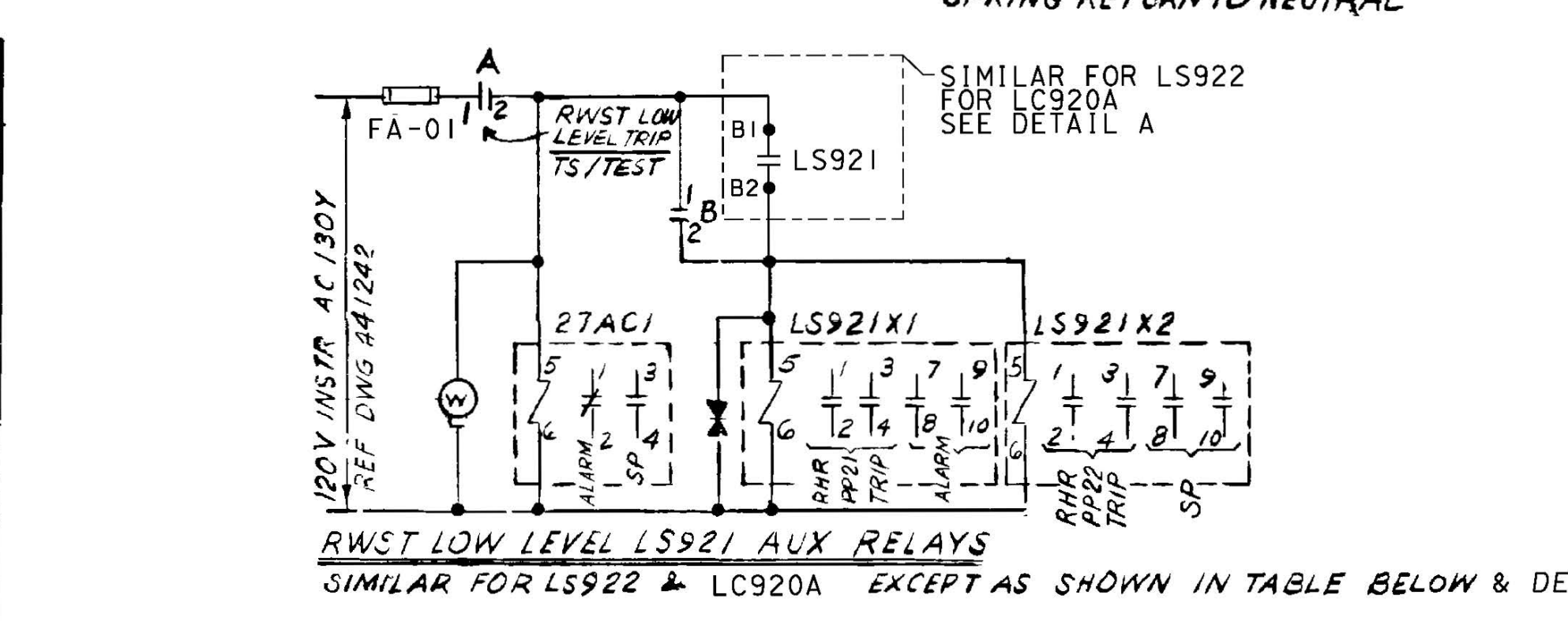


CONTACT	POSITION	REMARK
1-1-1C	X	THIS DWG
2-1-1C	X	THIS DWG
3-1-1C	X	THIS DWG
4-1-1C	X	THIS DWG
5-1-1C	X	THIS DWG
6-1-1C	X	THIS DWG
7-1-1C	X	THIS DWG
8-1-1C	X	THIS DWG
9-1-1C	X	THIS DWG
10-1-1C	X	THIS DWG
11-1-1C	X	THIS DWG
12-1-1C	X	THIS DWG

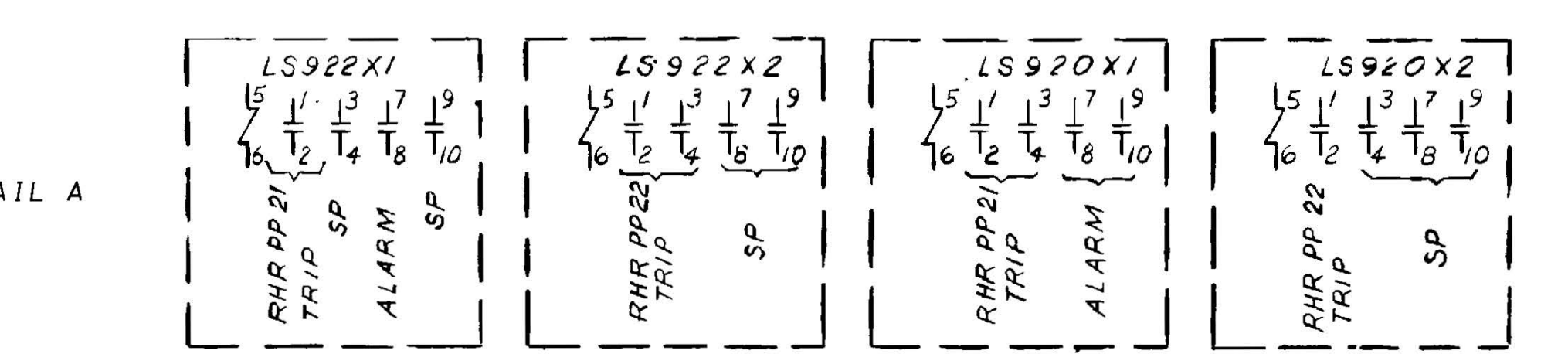


CONTACTS	POSITIONS	REMARKS
1-1-1C	X	THIS DWG
2-1-1C	X	THIS DWG
3-1-1C	X	THIS DWG
4-1-1C	X	THIS DWG
5-1-1C	X	THIS DWG
6-1-1C	X	THIS DWG
7-1-1C	X	THIS DWG
8-1-1C	X	THIS DWG
9-1-1C	X	THIS DWG
10-1-1C	X	THIS DWG
11-1-1C	X	THIS DWG
12-1-1C	X	THIS DWG

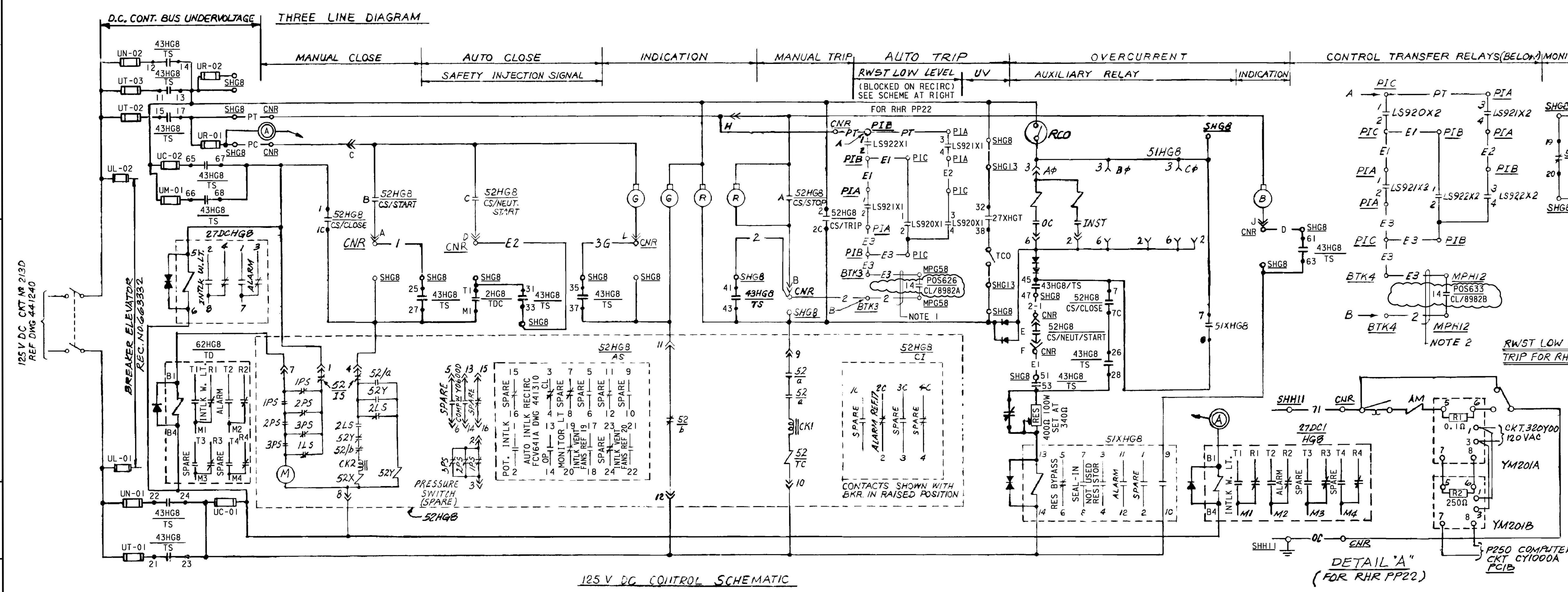
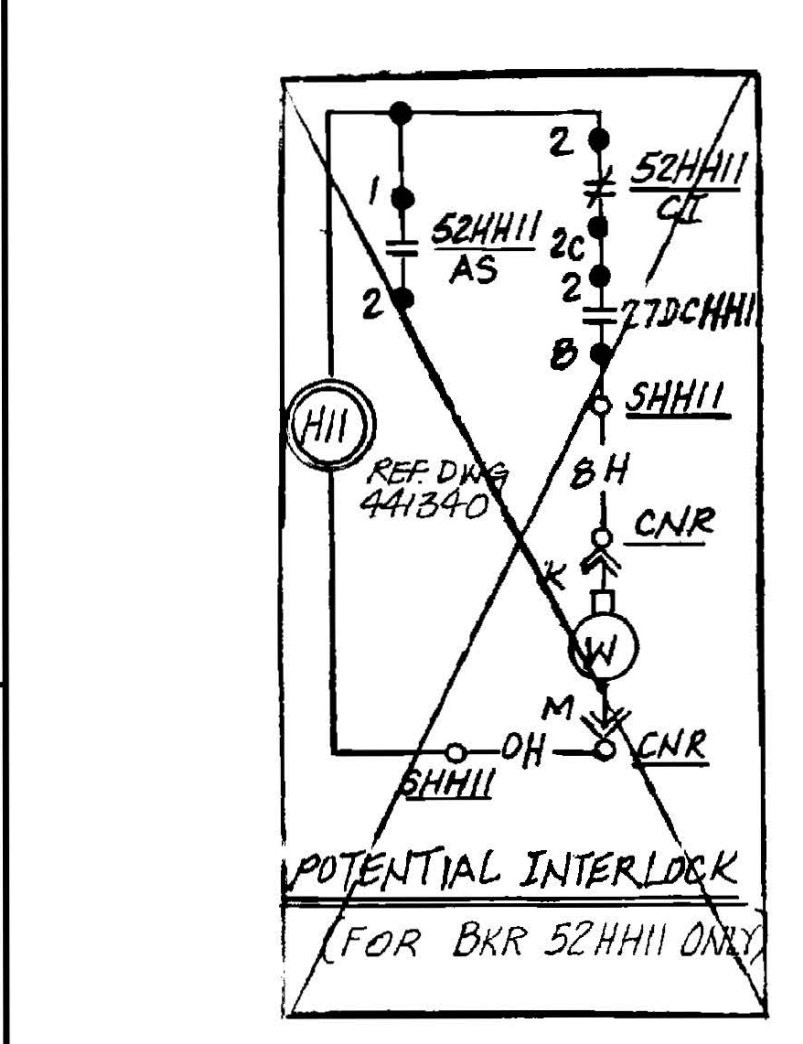
CONTACTS	POSITION	REMARKS
1-1-1C	X	THIS DWG
2-1-1C	X	THIS DWG
3-1-1C	X	THIS DWG
4-1-1C	X	THIS DWG
5-1-1C	X	THIS DWG
6-1-1C	X	THIS DWG
7-1-1C	X	THIS DWG
8-1-1C	X	THIS DWG
9-1-1C	X	THIS DWG
10-1-1C	X	THIS DWG
11-1-1C	X	THIS DWG
12-1-1C	X	THIS DWG



120V INSTR AC CMT. NR	RWST LEVEL INSTR. NR	RWST LEVEL TRIP AUX RELAY	UNDERVOLT. AUX.	PANEL LOC	FUSE ID	
130Y30	LS921	LS921X1	LS921X2	27AC1	AV0900DF PTA	FA-01
230Y00	LS922	LS922X1	LS922X2	27AC2	AV0901DG PTB	FA-01
330Y00	LC920A	LS920X1	LS920X2	27AC3	AV0902DH PTC	BA-01

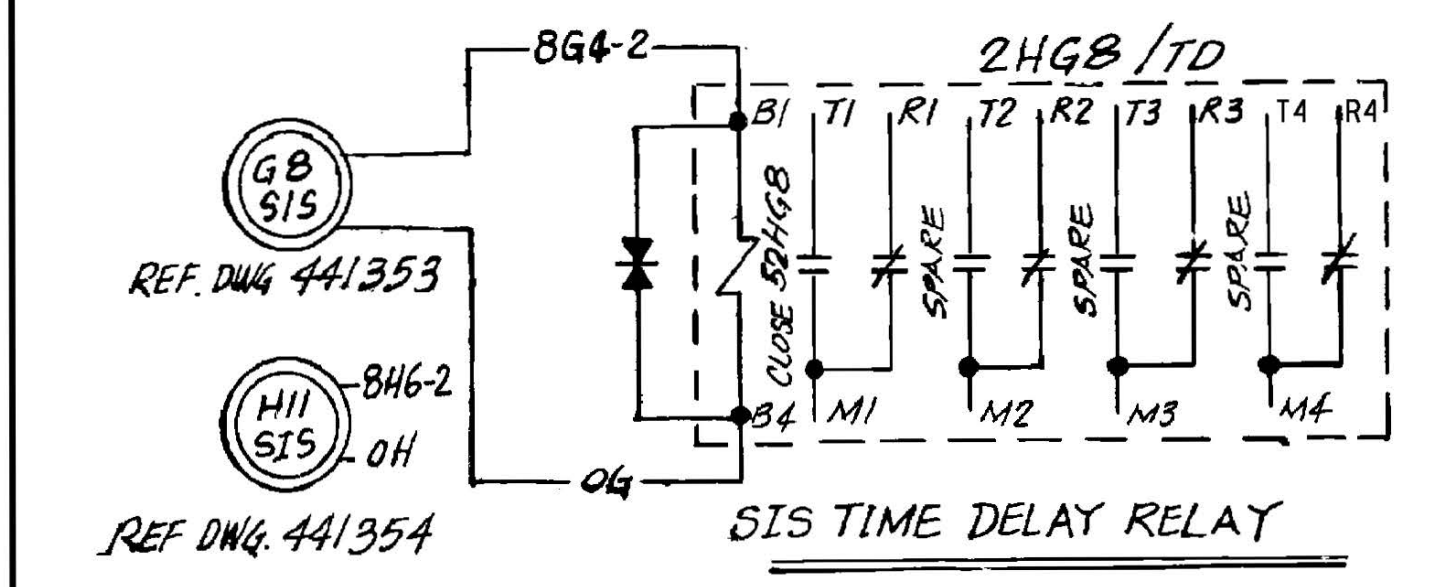


TRANSFER SWITCH: 43HG8, 43HH1
 LOC: SHG8, SHH1
 ELECTRO SWITCH SERIES 24



- EQUIPMENT LOCATION NUMBERS**
- BTH10 TERMINAL BOX AREA "H" NO 110
 - CNR CONTROL BOARD RESIDUAL HEAT
 - MHG8 RESIDUAL HEAT REMOVAL PUMP NO 21
 - SHG8 SWITCHGEAR 4KV BUS G CUBICLE 8
 - PIA INSTRUMENT PANEL A
- NOTES:**
- WIRES E3 & 2 BET BTK4 & MPH2 LISTED UNDER CMT 658P07, DWG #102754.
 - WIRES E3 & 2 BET BTK4 & MPH2 LISTED UNDER CMT H12P07, DWG #102754.
 - FOR FUSE RATINGS AND TYPE SEE FUSE LIST DWG. 066145.

- REFERENCES**
- DESCRIPTION OF ELEC SCHEMATIC DIAGS, SYMBOLS & CMT DESIGNATIONS 050003
 - EQUIPMENT LOCATION NUMBERS 103013
 - SINGLE LINE METER & RELAY DIAG 4160V SYSTEM BUS SECT G & H SH 3 441230
 - SINGLE LINE METER & RELAY DIAG 125/250V DC SYSTEM 441240
 - SCHEMATIC DIAG 4160V BUS DIFFERENTIAL SH 2 441343
 - SCHEMATIC DIAG 4160V BUS G AUTOMATIC TRANSFER 441353
 - SCHEMATIC DIAG 4160V BUS H AUTOMATIC TRANSFER 441354
 - SCHEMATIC DIAG POTENTIAL & SYNCHRONIZING 4160V SYSTEM SH 2 441340
 - LOGIC DIAGRAM RESIDUAL HEAT REMOVAL PUMPS 100793
 - PIPING SCHEMATIC RESIDUAL HEAT REMOVAL SYSTEM 102010
 - SCHEMATIC DIAG MAIN ANNUNCIATOR SH.1 500771
 - SCHEMATIC DIAG MAIN ANNUNCIATOR SH.17 441280
 - SCHEMATIC DIAG MONITOR LIGHT BOX C 441454
 - SCHEMATIC DIAG RHR MOV'S 441370
 - SCHEMATIC DIAG SIS MOV'S 441317
 - INSTRUMENT SCHEMATIC LEVEL INSTR SYSTEM SH.17A 102033
 - SCHEMATIC DIAG MAIN ANNUNCIATOR SH.17 500787
 - P. D. S. CONTROL CIRCUITS SCHEMATIC DIAGRAM 600983B-69
 - SCHEMATIC DIAG AUX & FUEL HANDLING BLDGS VENTILATION SYS (POV1) 454671
 - SCHEMATIC DIAG AUX & FUEL HANDLING BLDGS VENTILATION SYS (POV2) 454678



MOTOR NO	MOTOR LOC NO	CKT BKR NO	CIRCUIT NO	BUS SECTION	DC CMT NO	BUS UNDERVOLTAGE RELAY LOCATION	CONTACT	ALARM OVERCURRENT	CIRCUIT GROUND	NBS	COMPUTER CKT NO	BKR AUX SW	AMMETER CIRCUIT
21	MHG8	52HG8	G08H00	G	213U	27XHG7	SHG13	410600DG	1A0600DG	AH4307DB	CV0600DG	FCV641A	YM200A
22	MHH11	52HH11	H11H00	H	314D	27XHHT	SHH13	A10600DH	1A0600DH	AH4420DH	CV0601DH	FCV641B	YM201B

KEY DWG. SECTION 4

DATE: 03-13-2018
 D.D. ZNS4
 R.E. FXC2
 I.V. N/A
 P.E. N/A

REVISION DESCRIPTION
 Revised Per DON-2*1823

UNIT 2
 ELECTRICAL SCHEMATIC DIAGRAM
 RESIDUAL HEAT REMOVAL PUMPS

DWING CANYON POWER PLANT
 PACIFIC GAS AND ELECTRIC COMPANY
 SAN FRANCISCO, CALIFORNIA

DWG SCALE:
 BILL OF MATL:
 SUPDS:
 SUPD BY:
 DRAWING SHEET PAGE REV
 441309 1 0 24

RASTER-441309-1-0.dgn
 DON-441309-1-0.dgn
 CAD User: ZNS4 Date: 03-13-2018