

A

B

C

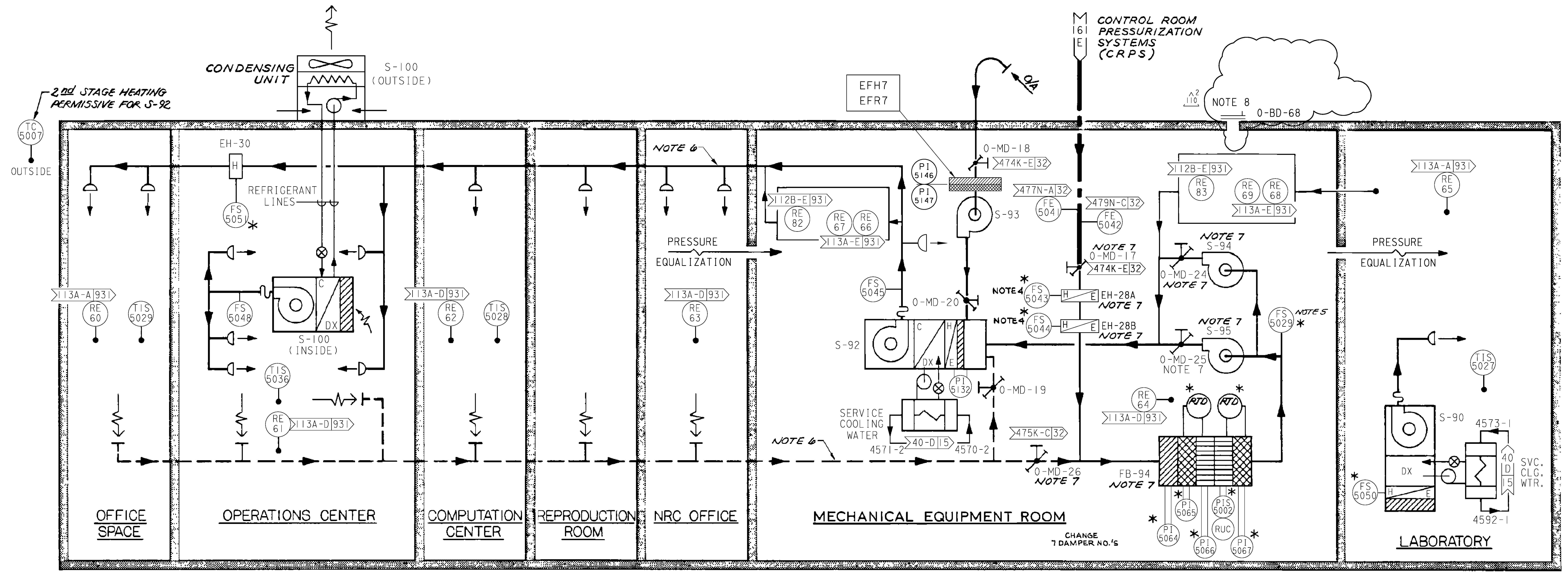
D

A

B

C

D



NOTES:

- 1.
2. FOR LEGEND, ABBREVIATIONS, & GENERAL NOTES, SEE SHEET 2 (102023) OR SHEET 3 (102001).
3. SEE DRAWING 512904 FOR TECHNICAL SUPPORT CENTER FLOW DIAGRAM.
4. ABANDONED IN PLACE.
5. FLOW SWITCH FS-5029 OPERATES THE LOW FLOW ALARM. (19B-C)
6. DUCTWORK IS DESIGN CLASS II; DUCT AND DUCT SUPPORTS ARE QUALIFIED TO SEISMIC CLASS I CRITERIA.
7. EMERGENCY FILTRATION EQUIPMENT IS DESIGN CLASS II; SUPPORTS FOR EMERGENCY FILTRATION EQUIPMENT ARE ANALYZED TO SEISMIC CLASS I CRITERIA.
8. WHEN UTILIZED, THE ISOLATION PLATES BECOME THE TSC PRESSURE BOUNDARY. (197-B)

REFERENCE DRAWINGS:

1. SEE VENDOR DRAWINGS 6033085-1 AND 6033085-2 FOR COMPLETE DESIGN DETAILS FOR THE S-93 FAN-FILTRATION UNIT SKID.

**TECHNICAL SUPPORT CENTER HVACS
(COMMON AREA)
EL. 104'-0"**

UNIT 1 & 2

DIABLO CANYON POWER PLANT - PG&E CO.
VENTILATION & AIR CONDITIONING SYSTEMS

DRAWING	SHEET	PAGE	REV
102023	19	0	110

RASTER=102023-19-0.dgn
 DCN=102023-19-0.dgn
 CAD User: FAZI Date: 04-16-2018