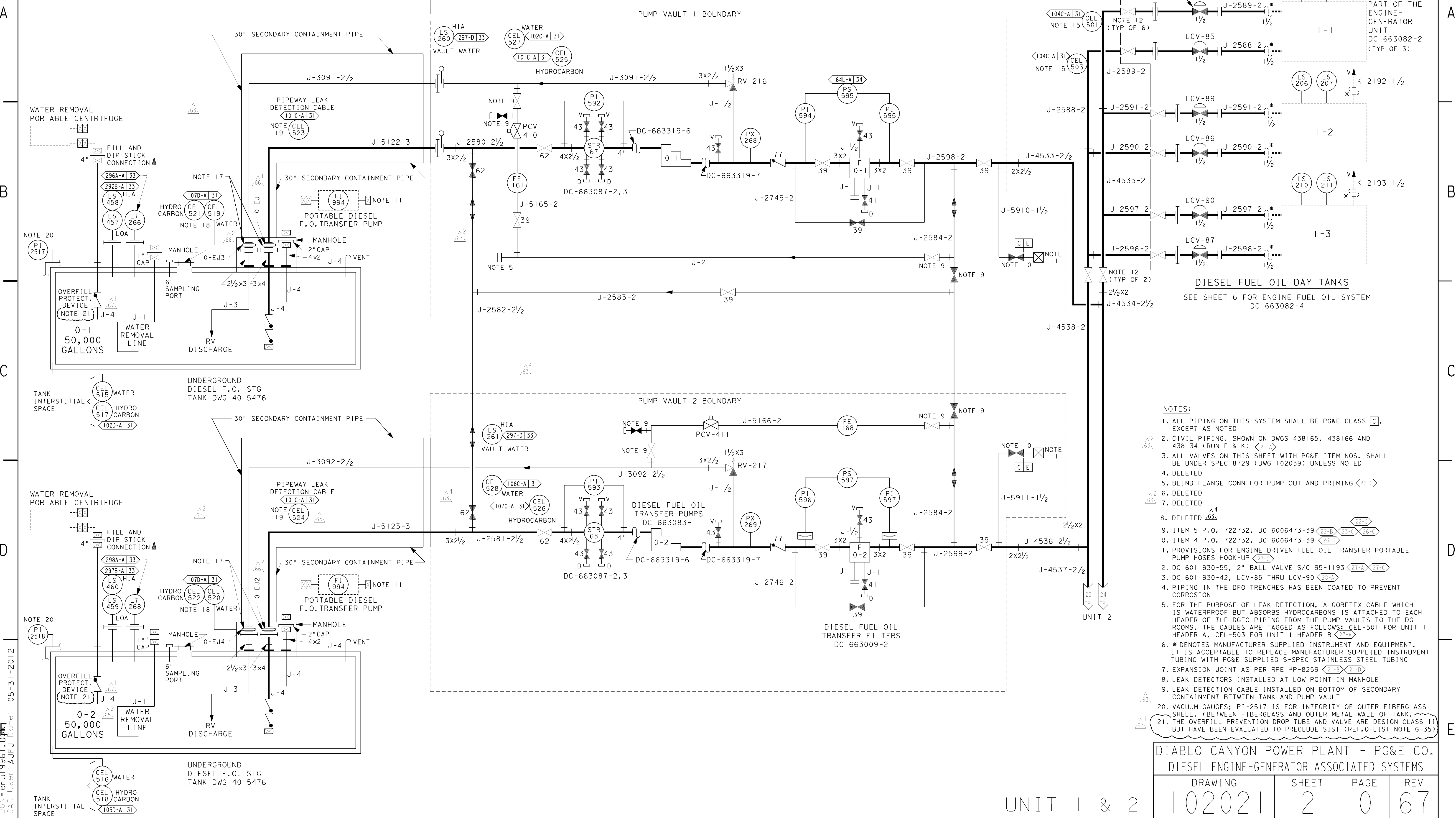


CIVIL DWGS
NOTE 2

MECHANICAL DWG 508845

DIESEL FUEL OIL SYSTEM



- NOTES:**
- ALL PIPING ON THIS SYSTEM SHALL BE PG&E CLASS [C], EXCEPT AS NOTED
 - CIVIL PIPING, SHOWN ON DWGS 438165, 438166 AND 438134 (RUN F & K) [21-B]
 - ALL VALVES ON THIS SHEET WITH PG&E ITEM NOS. SHALL BE UNDER SPEC 8729 (DWG 102039) UNLESS NOTED
 - DELETED
 - BLIND FLANGE CONN FOR PUMP OUT AND PRIMING [22-C]
 - DELETED
 - DELETED
 - DELETED [A4]
 - ITEM 5 P.O. 722732, DC 6006473-39 [22-B] [23-C] [26-D]
 - ITEM 4 P.O. 722732, DC 6006473-39 [26-C]
 - PROVISIONS FOR ENGINE DRIVEN FUEL OIL TRANSFER PORTABLE PUMP HOSES HOOK-UP [27-C]
 - DC 6011930-55, 2" BALL VALVE S/C 95-1193 [27-A] [27-C]
 - DC 6011930-42, LCV-85 THRU LCV-90 [28-A]
 - PIPING IN THE DFO TRENCHES HAS BEEN COATED TO PREVENT CORROSION
 - FOR THE PURPOSE OF LEAK DETECTION, A GORETEX CABLE WHICH IS WATERPROOF BUT ABSORBS HYDROCARBONS IS ATTACHED TO EACH HEADER OF THE DGFO PIPING FROM THE PUMP VAULTS TO THE DG ROOMS. THE CABLES ARE TAGGED AS FOLLOWS: CEL-501 FOR UNIT 1 HEADER A, CEL-503 FOR UNIT 1 HEADER B [27-D]
 - * DENOTES MANUFACTURER SUPPLIED INSTRUMENT AND EQUIPMENT. IT IS ACCEPTABLE TO REPLACE MANUFACTURER SUPPLIED INSTRUMENT TUBING WITH PG&E SUPPLIED S-SPEC STAINLESS STEEL TUBING
 - EXPANSION JOINT AS PER RPE #P-8259 [21-B] [21-D]
 - LEAK DETECTORS INSTALLED AT LOW POINT IN MANHOLE
 - LEAK DETECTION CABLE INSTALLED ON BOTTOM OF SECONDARY CONTAINMENT BETWEEN TANK AND PUMP VAULT
 - VACUUM GAUGES: PI-2517 IS FOR INTEGRITY OF OUTER FIBERGLASS SHELL. (BETWEEN FIBERGLASS AND OUTER METAL WALL OF TANK.)
 - THE OVERFILL PREVENTION DROP TUBE AND VALVE ARE DESIGN CLASS 11) BUT HAVE BEEN EVALUATED TO PRECLUDE SIS1 (REF.0-LIST NOTE G-35)

DIABLO CANYON POWER PLANT - PG&E CO.
DIESEL ENGINE-GENERATOR ASSOCIATED SYSTEMS

DRAWING	SHEET	PAGE	REV
102021	2	0	67

UNIT 1 & 2

RASTER=erui9961.dgn
 DGN=erui9961.dgn
 CAD User:AJFJ Date: 05-31-2012