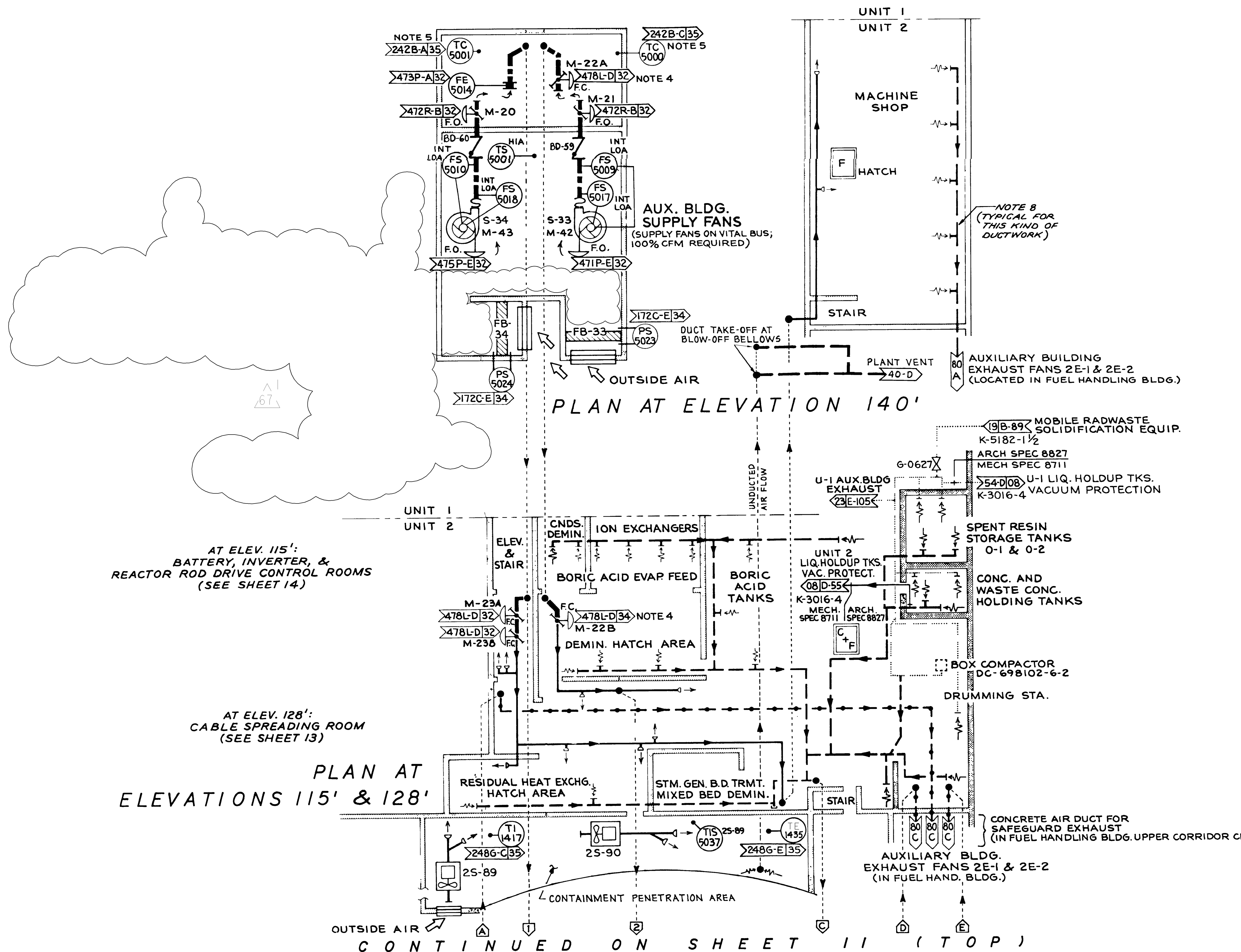


A  
B  
C  
D  
E



- NOTES:**
- FOR LEGEND, ABBREVIATIONS, INDEX, AND GENERAL NOTES, SEE SHEET 2 (108023) OR SHEET 3 (108001).
  - 
  - SEE DRAWING 501365 FOR AIR FLOW DIAGRAM. SEE DRAWINGS 59361, 59363, 501370 & 501372 FOR DUCT LAYOUT.
  - OPEN ONLY WHEN SAFEGUARDS AND BUILDING VENTILATION SYSTEMS ARE OPERATING SIMULTANEOUSLY (SUPPLY FAN S-34 WITH EXHAUST FAN 2E-1, & SUPPLY FAN S-33 WITH EXHAUST FAN 2E-2, RESPECTIVELY.) >103-A> >103-D>
  - TEMPERATURE CONTROLLERS ARE LOCATED IN SUPPLY FAN ROOMS. ONLY TEMPERATURE BULB IS LOCATED IN THIS AIR PLENUM >102-A> >104-A>.
  - DELETED
  - RE-8 IS COMMON AND IS SHOWN ON UNIT 1. IT IS SHOWN HERE ON UNIT 2 FOR REFERENCE PURPOSES ONLY. >106-D>
  - DUCTWORK IS DESIGN CLASS II; DUCT AND DUCT SUPPORTS ARE QUALIFIED TO SEISMIC CLASS I CRITERIA. >106-B>

AT ELEV. 115':  
BATTERY, INVERTER, &  
REACTOR ROD DRIVE CONTROL ROOMS  
(SEE SHEET 14)

AT ELEV. 128':  
CABLE SPREADING ROOM  
(SEE SHEET 13)

PLAN AT  
ELEVATIONS 115' & 128'

CONTINUED ON SHEET 11 (TOP)

**AUXILIARY BUILDING HVAC (ENGINEERED SAFETY EQUIPMENT AREA)**

DIABLO CANYON POWER PLANT - PG&E CO.			
VENTILATION & AIR CONDITIONING SYSTEMS			
DRAWING	SHEET	PAGE	REV
108023	10	0	67

RASTER=108023s10p0.dgn  
 DGN=108023s10p0.dgn  
 CAD User: MNRU Date: 05-14-2015