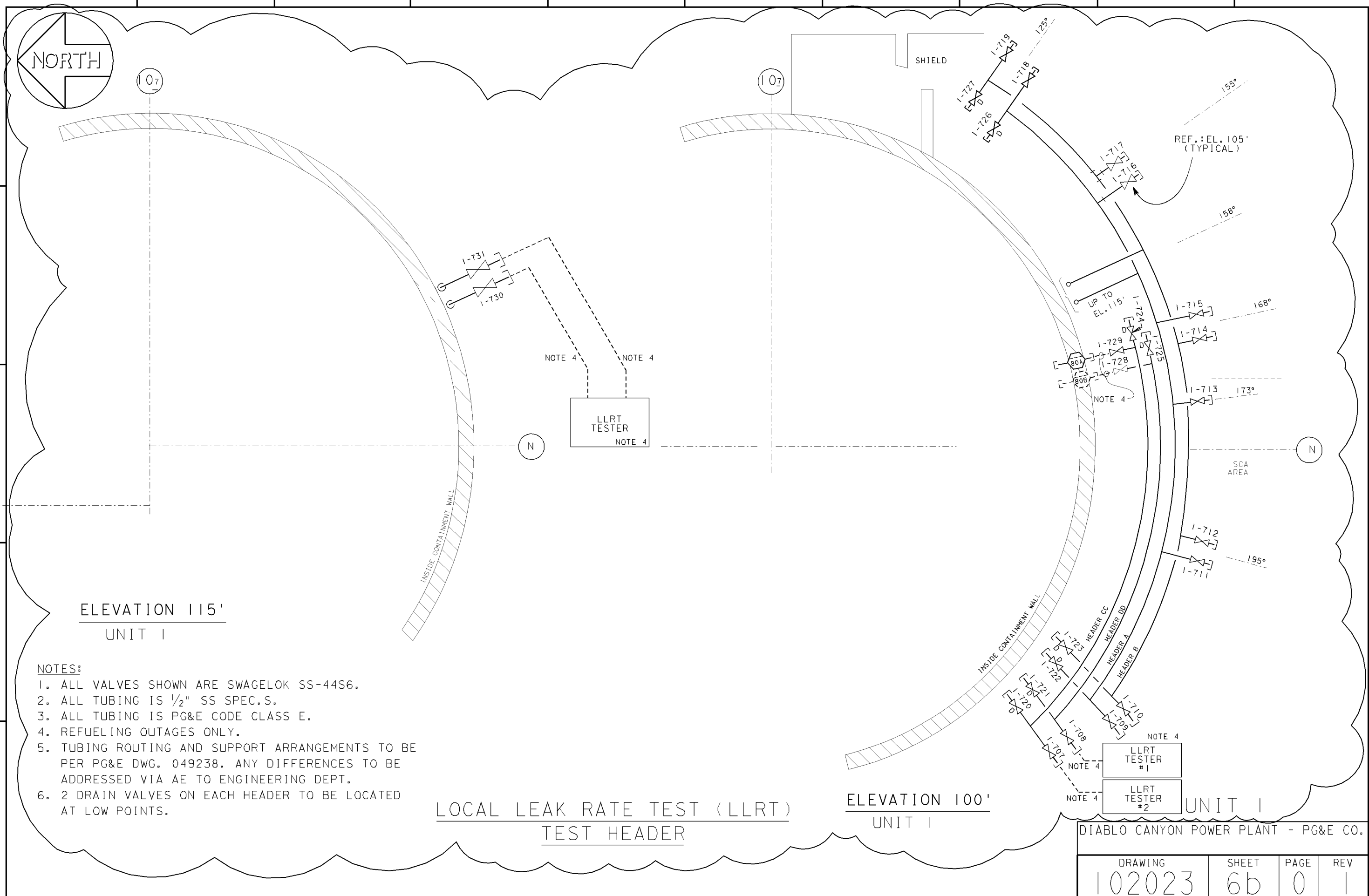


RASTER=102023.dgn
 DGN=102023.dgn
 CAD User: NDNI Date:01-12-2006



ELEVATION 115'
 UNIT 1

NOTES:

1. ALL VALVES SHOWN ARE SWAGELOK SS-44S6.
2. ALL TUBING IS 1/2" SS SPEC.S.
3. ALL TUBING IS PG&E CODE CLASS E.
4. REFUELING OUTAGES ONLY.
5. TUBING ROUTING AND SUPPORT ARRANGEMENTS TO BE PER PG&E DWG. 049238. ANY DIFFERENCES TO BE ADDRESSED VIA AE TO ENGINEERING DEPT.
6. 2 DRAIN VALVES ON EACH HEADER TO BE LOCATED AT LOW POINTS.

LOCAL LEAK RATE TEST (LLRT)
 TEST HEADER

ELEVATION 100'
 UNIT 1

DIABLO CANYON POWER PLANT - PG&E CO.

DRAWING	SHEET	PAGE	REV
102023	6b	0	1

INPG1C
 1 Size

01-12-2006	NDNI	Fxc2		KERSI J. DALAL	MECHANICAL	M 16690	3/31/2006	INITIAL ISSUE PER FCT-30426
DATE	DWN	RE	IV	PROFESSIONAL ENGINEER	PE DISC.	PE#	PE EXP.	