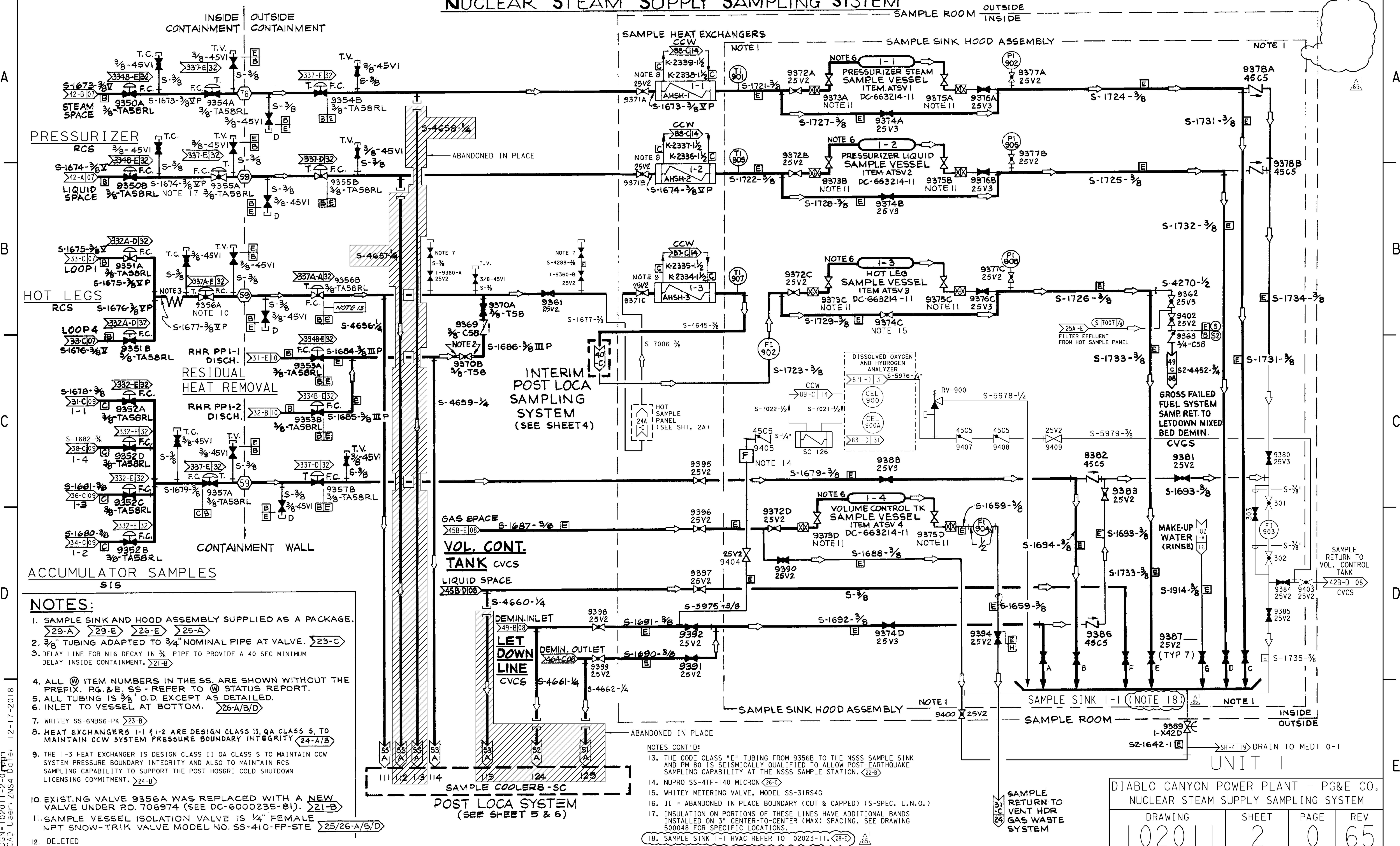


NUCLEAR STEAM SUPPLY SAMPLING SYSTEM



- NOTES:**
- SAMPLE SINK AND HOOD ASSEMBLY SUPPLIED AS A PACKAGE. 29-A 29-E 26-E 25-A
 - 3/8" TUBING ADAPTED TO 3/4" NOMINAL PIPE AT VALVE. 23-C
 - DELAY LINE FOR N16 DECAY IN 3/8" PIPE TO PROVIDE A 40 SEC MINIMUM DELAY INSIDE CONTAINMENT. 21-B
 - ALL (M) ITEM NUMBERS IN THE SS. ARE SHOWN WITHOUT THE PREFIX. PG.&E. SS-REFER TO (M) STATUS REPORT.
 - ALL TUBING IS 3/8" O.D. EXCEPT AS DETAILED.
 - INLET TO VESSEL AT BOTTOM. 26-A/B/D
 - WHITEY SS-6NBS6-PK 23-B
 - HEAT EXCHANGERS 1-1 & 1-2 ARE DESIGN CLASS II, QA CLASS S, TO MAINTAIN CCW SYSTEM PRESSURE BOUNDARY INTEGRITY 24-A/B
 - THE 1-3 HEAT EXCHANGER IS DESIGN CLASS II QA CLASS S TO MAINTAIN CCW SYSTEM PRESSURE BOUNDARY INTEGRITY AND ALSO TO MAINTAIN RCS SAMPLING CAPABILITY TO SUPPORT THE POST HOSGRI COLD SHUTDOWN LICENSING COMMITMENT. 24-B
 - EXISTING VALVE 9356A WAS REPLACED WITH A NEW VALVE UNDER P.O. 706974 (SEE DC-6000235-81). 21-B
 - SAMPLE VESSEL ISOLATION VALVE IS 1/4" FEMALE NPT SNOW-TRIK VALVE MODEL NO. SS-410-FP-STE 25/26-A/B/D
 - DELETED

- NOTES CONT'D:**
- THE CODE CLASS "E" TUBING FROM 9356B TO THE NSSS SAMPLE SINK AND PM-80 IS SEISMICALLY QUALIFIED TO ALLOW POST-EARTHQUAKE SAMPLING CAPABILITY AT THE NSSS SAMPLE STATION. 22-B
 - NUPRO SS-4TF-140 MICRON 26-C
 - WHITEY METERING VALVE, MODEL SS-31RS4G
 - IF = ABANDONED IN PLACE BOUNDARY (CUT & CAPPED) (S-SPEC. U.N.O.)
 - INSULATION ON PORTIONS OF THESE LINES HAVE ADDITIONAL BANDING INSTALLED ON 3" CENTER-TO-CENTER (MAX) SPACING. SEE DRAWING 500048 FOR SPECIFIC LOCATIONS.
 - SAMPLE SINK 1-1 HVAC REFER TO 102023-11. 28-E

UNIT I

DIABLO CANYON POWER PLANT - PG&E CO.
NUCLEAR STEAM SUPPLY SAMPLING SYSTEM

DRAWING	SHEET	PAGE	REV
102011	2	0	65