

30B

31B

32B

33B

34B

35B

36B

37B

38B

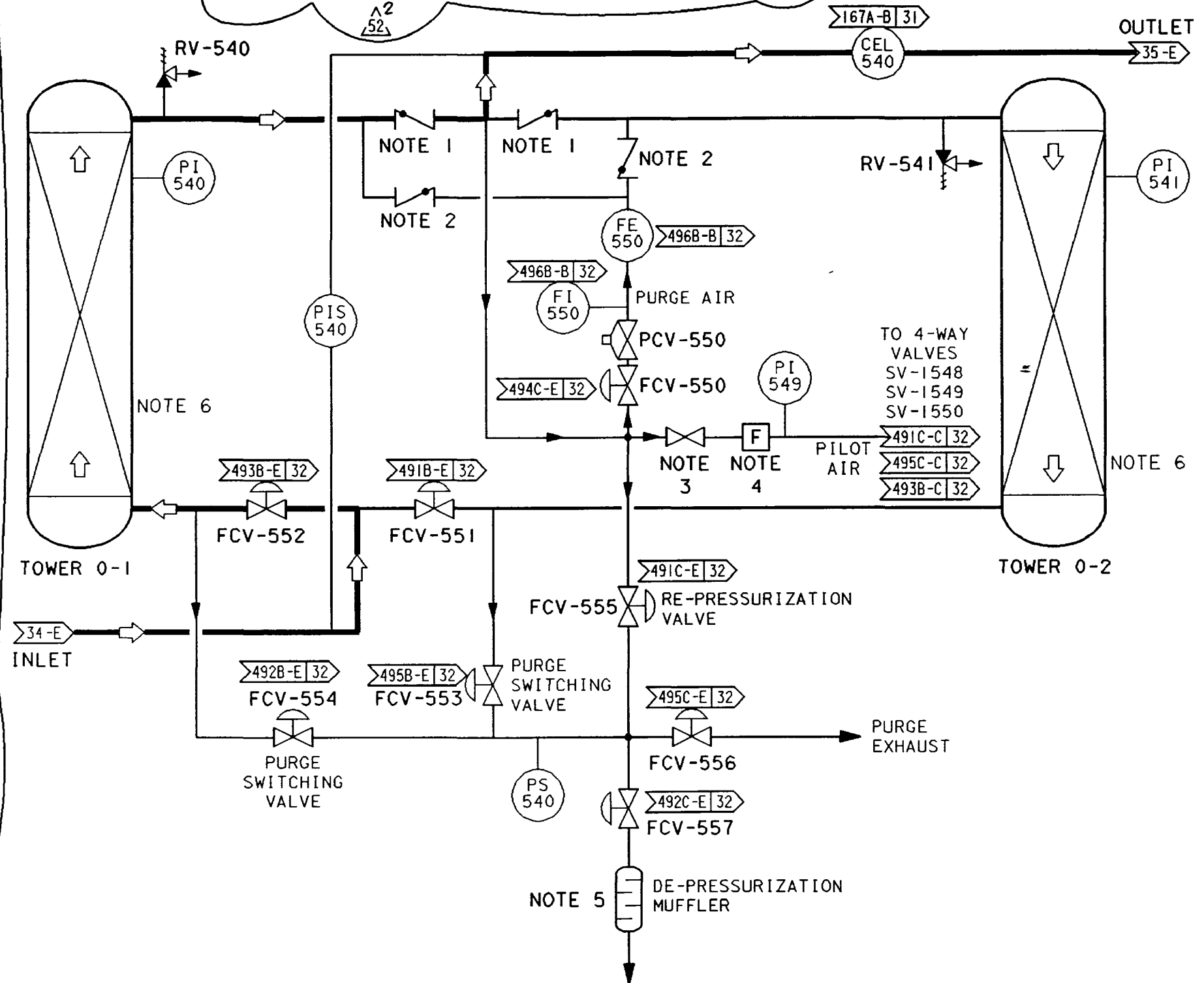
39B

AIR DRYER 0-2
(TYPICAL FOR AIR DRYERS 0-2, 0-3 & 0-4)

SERVICE DESCRIPTION	AIR DRYER NUMBER		
	0-2	0-3	0-4
TOWER 0-1 PRESSURE INDICATOR	PI-540	PI-1703	PI-1706
TOWER 0-2 PRESSURE INDICATOR	PI-541	PI-1704	PI-1707
DIFFERENTIAL PRESSURE INDICATOR W/ "HIGH" ΔP ALARM	PIS-540	PIS-541	PIS-542
PILOT AIR PRESSURE INDICATOR	PI-549	PI-1705	PI-1708
PURGE EXHAUST PRESSURE SWITCH	PS-540	PS-1708	PS-1709
PURGE AIR FLOW ORIFICE	FE-550	FE-551	FE-552
PURGE AIR FLOW INDICATOR	FI-550	FI-551	FI-552
PURGE AIR PRES. CONTROL VALVE	PCV-550	PCV-561	PCV-562
PURGE AIR SHUT-OFF VALVE	FCV-550	FCV-1550	FCV-1560
PURGE AIR SWITCHING VALVES	FCV-553 FCV-554	FCV-1553 FCV-1554	FCV-1563 FCV-1564
PURGE EXHAUST VALVE	FCV-556	FCV-1556	FCV-1566
DE-PRESSURIZATION VALVE	FCV-557	FCV-1557	FCV-1567
RE-PRESSURIZATION VALVE	FCV-555	FCV-1553	FCV-1565
TOWER INLET SWITCHING VALVES	FCV-551 FCV-552	FCV-1551 FCV-1552	FCV-1561 FCV-1562
MOISTURE SENSING ELEMENT/ INDICATOR/ "HIGH" DEW POINT ALARM	CEL-540	CEL-541	CEL-542
TOWER "0-1" RELIEF VALVE	RV-540	RV-542	RV-544
TOWER "0-2" RELIEF VALVE	RV-541	RV-543	RV-545
4-WAY PILOT AIR SOLENOID VALVES	SV-1548 SV-1549 SV-1550	SV-1558 SV-1559 SV-1560	SV-1568 SV-1569 SV-1570
REFERENCE MANUFACTURE DRAWING DC NUMBER	663003-44	663004-49	663004-59
INLET LINE DWG. CROSS-REFERENCE COORDINATES	34-E	33A-C	33A-B
OUTLET LINE DWG. CROSS-REFERENCE COORDINATES	35-E	34A-C	34A-B

NOTES:

- 3" TECHNO OUTLET CHECK VALVE. >35B-A
- 1" APOLLO PURGE CHECK VALVE. >35B-B >36B-A
- 3/4" APOLLO 2-WAY MANUAL PILOT AIR AND PURGE AIR SHUTOFF BALL VALVE. >37B-C
- HECO PILOT AIR FILTER. >37B-C
- 3/4" QUIETAIR DE-PRESSURIZATION MUFFLER. >36B-D
- DRYING FLOW DIRECTION CAN BE EITHER UP OR DOWN. REACTIVATION PURGE FLOW IS ALWAYS COUNTER-CURRENT TO DRYING DIRECTION. >34B-C >39B-C



2025S3B.M01 12-01-94 ROA

..VNM1/FORHATS/DC1.FMT

SUN 52 IC

33

40

P G & E CO.
SHEET 3B OF SHEETSUNIT 1
102025 52
REV

MICROFILM