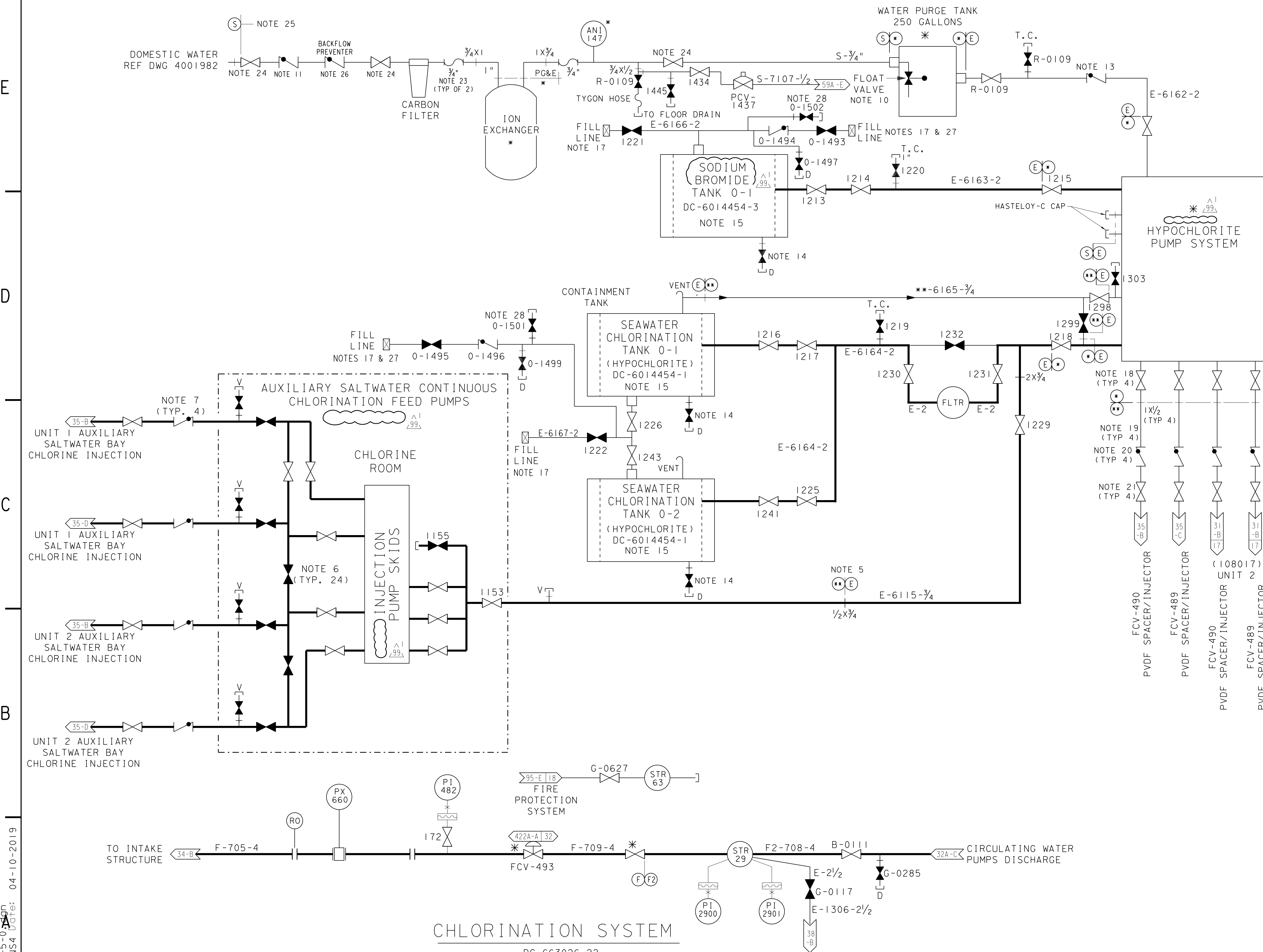


- NOTES:**
1. ALL PIPING IN THIS SHEET ARE PG&E CODE CLASS "E"
  2. DELETED
  3. DELETED
  4. DELETED
  5. \*\* 1/2" OD HASTELLOY C TUBING, 0.035 WALL THICKNESS, AND HASTELLOY SWAGelok FITTINGS
  6. 1/2" WHITE HASTELLOY BALL VALVE WITH SWAGelok END CONNECTIONS, MODEL # HC-63TS8-T
  7. 1/2" NUPRO HASTELLOY SPRING LOADED CHECK VALVE WITH 10 PSIG CRACKING PRESSURE AND SWAGelok END CONNECTIONS, MODEL # HC-BC-TR-10
  8. DELETED
  9. DELETED
  10. FLOAT VALVE 1"X1" BRASS ROBERTS P/N R400 OR EQUIVALENT
  11. BACKFLOW PREVENTER 3/4" WATTS REGULATOR P/N 3/4" X 3/4" -7-2-2 OR EQUIVALENT (ABANDONED)
  12. 1" SS BALL VALVE, WHITEY 651S16 OR EQUIVALENT
  13. 2" PVC CHECK VALVE PASTOMATIC CKM100V OR EQUIVALENT
  14. DRAIN VALVE PROVIDED BY TANK VENDOR
  15. TANK AND CONTAINMENT BULKHEAD FITTING ARE THREADED CONNECTIONS AS PROVIDED BY MANUFACTURER. CONNECTION BETWEEN TANK AND CONTAINMENT IS FLEXIBLE PVC
  16. DELETED
  17. SECONDARY CONTAINMENT FOR FILL LINES PROVIDED BY 4" E-SPEC PIPING
  18. TRUE UNION TYPE 1" THREADED BALL VALVES ,WITH VITON ELASTOMERS (OR EQUIVALENT)
  19. 1/2" HASTELLOY C TUBING, .035" WALL
  20. NUPRO "C" SERIES CHECK VALVE WITH 1/2" SWAGelok END CONNECTIONS, 10# CRACKING PRESS. (HC-BC-10 OR EQUIVALENT)
  21. WHITEY SERIES "60" BALL VALVE WITH 1/2" SWAGelok END CONNECTIONS (HC-63TS8, OR EQUIVALENT)
  22. \* DENOTES EQUIPMENT SUPPLIED BY OTHERS
  23. 3/4" FLEXHOSE SYNPLEX 3130-12 STOCK CODE 17-2193 W/ 3/4" NPT FLEXHOSE COUPLINGS (STOCK CODE 17-2185 OR EQUIV.)
  24. BALL VALVE 3/4" SPEC R-0388 (STOCK CODE 72-9968 OR EQUIV.)
  25. TUBE AND FITTINGS IAW "S" SPEC, UNLESS OTHERWISE NOTED
  26. 3/4" PRESSURE REDUCING BACKFLOW PREVENTER FEBCO MODEL 825-Y OR EQUIV.
  27. FOR PROFILE VIEW & PIPE SUPPORT SEE DWG 6023269-19.
  28. DRAIN VALVES FOR LEAK DETECTION AT LOW POINT OF SECONDARY LEAKAGE CONTAINMENT PIPE FOR LINE 6166 AND 6167.



**CHLORINATION SYSTEM**  
DC-663026-22

UNIT 1

DIABLO CANYON POWER PLANT - PG&E CO.  
SALTWATER SYSTEMS

DRAWING	SHEET	PAGE	REV
102017	5	0	99

RASTER=102017-5-0.dgn  
 DGN=102017-5-0.dgn  
 CAD User: ZNS4 Date: 04-10-2019

04-10-2019	ZNS4	FXC2	N/A	NOT REQUIRED PER CF3.1D5	-	-	-	Revised Per DFT-7*4856
DATE	DWN	RE	IV	PROFESSIONAL ENGINEER	PE DISC.	PE#	PE EXP.	