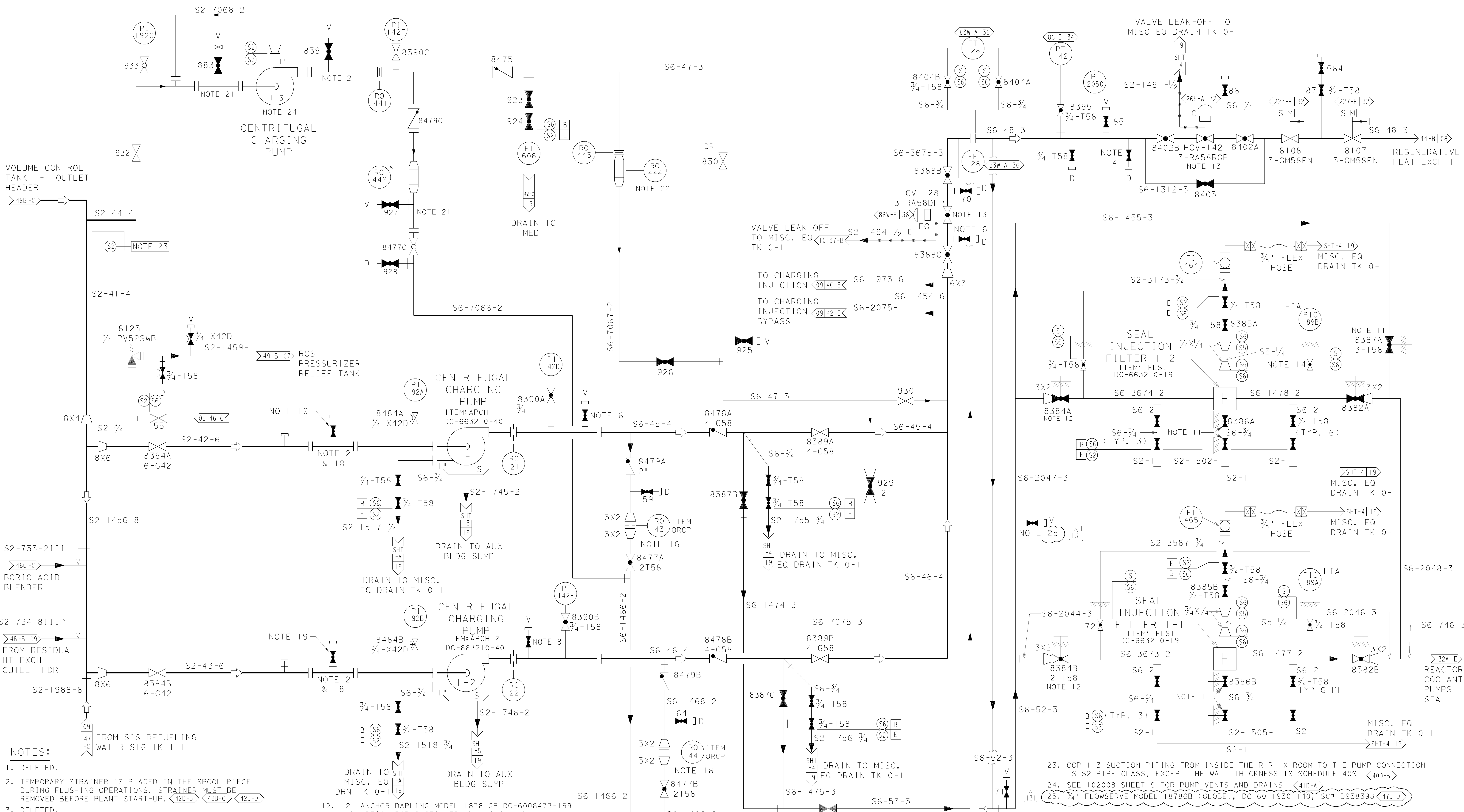


A
B
C
D

A
B
C
D



- NOTES:**
- DELETED.
 - TEMPORARY STRAINER IS PLACED IN THE SPOOL PIECE DURING FLUSHING OPERATIONS. STRAINER MUST BE REMOVED BEFORE PLANT START-UP. [42D-B](#) [42D-C](#) [42D-D](#)
 - DELETED.
 - DELETED
 - DELETED
 - ANCHOR/DARLING MODEL 1878, DC-6006473-7 [46D-B](#) [44D-C](#)
 - 3/4"-600" VELAN S.W. GATE VALVE, DC-6006473-167
 - ANCHOR/DARLING 3/4" MODEL 1878 GB DC-6006473-97 [43D-D](#)
 - DELETED.
 - DELETED.
 - REINSTALLED ORIGINAL STYLE HANDWHEELS ON THESE VALVES [47D/48D/49D-C/E](#)

- 2" ANCHOR DARLING MODEL 1878 GB DC-6006473-159 (NO REACH ROD INSTALLED) [47D-E](#) [47D-C](#)
- VALVES HCV-142 AND FCV-128 ARE 2" SIZE VALVES WITH ENDS PREPARED TO MATCH 3" PIPE [46D-B](#) [48D-B](#)
- PG&E REC. NO. DC-6011930-79, STOCK CODE 95-2755 [47D-B](#) [49D-C](#)
- 3/4" GLOBE VALVE; ANCHOR DARLING MODEL 1878GB, PG&E REC. NO. DC-6011930-79 [46D-E](#)
- PG&E REC. DWG. NO. 663210-277 [44D-C](#) [44D-E](#)
- DELETED
- SPOOL PIECE AND FLANGES ARE "S2" SCH. 40. [42D-C](#) [42D-D](#)
- 3/4" GLOBE VALVE (VELAN) S/C 95-5897 (DC 6006473-168). [42D-C](#) [42D-D](#)
- DELETED
- REMOVABLE SPOOLS FOR USE OF OVERHEAD MONORAIL [41D-A](#) [42D-A](#) [42D-B](#)
- THE LTOP PRO ASSEMBLY CONSISTS OF A PRESSURE REDUCING ORIFICE(PRO), A SWAGE-TYPE REDUCER, AND A FLOW BAFFLE PER DWG DC-663230-409 [44D-A](#)

- CCP 1-3 SUCTION PIPING FROM INSIDE THE RHR HX ROOM TO THE PUMP CONNECTION IS S2 PIPE CLASS, EXCEPT THE WALL THICKNESS IS SCHEDULE 40S [40D-B](#)
- SEE 102008 SHEET 9 FOR PUMP VENTS AND DRAINS [41D-A](#)
- 3/4" FLOWSERVE MODEL 1878GB (GLOBE), DC-6011930-140, SC# D958398 [47D-D](#)

UNIT I

DIABLO CANYON POWER PLANT - PG&E CO.
CHEMICAL & VOLUME CONTROL SYSTEM

DRAWING	SHEET	PAGE	REV
102008	4D	0	131

RASTER=erU06663.dgn
DCN=erU06663.dwg
CAD User: ZNS4 Date: 12-28-2015