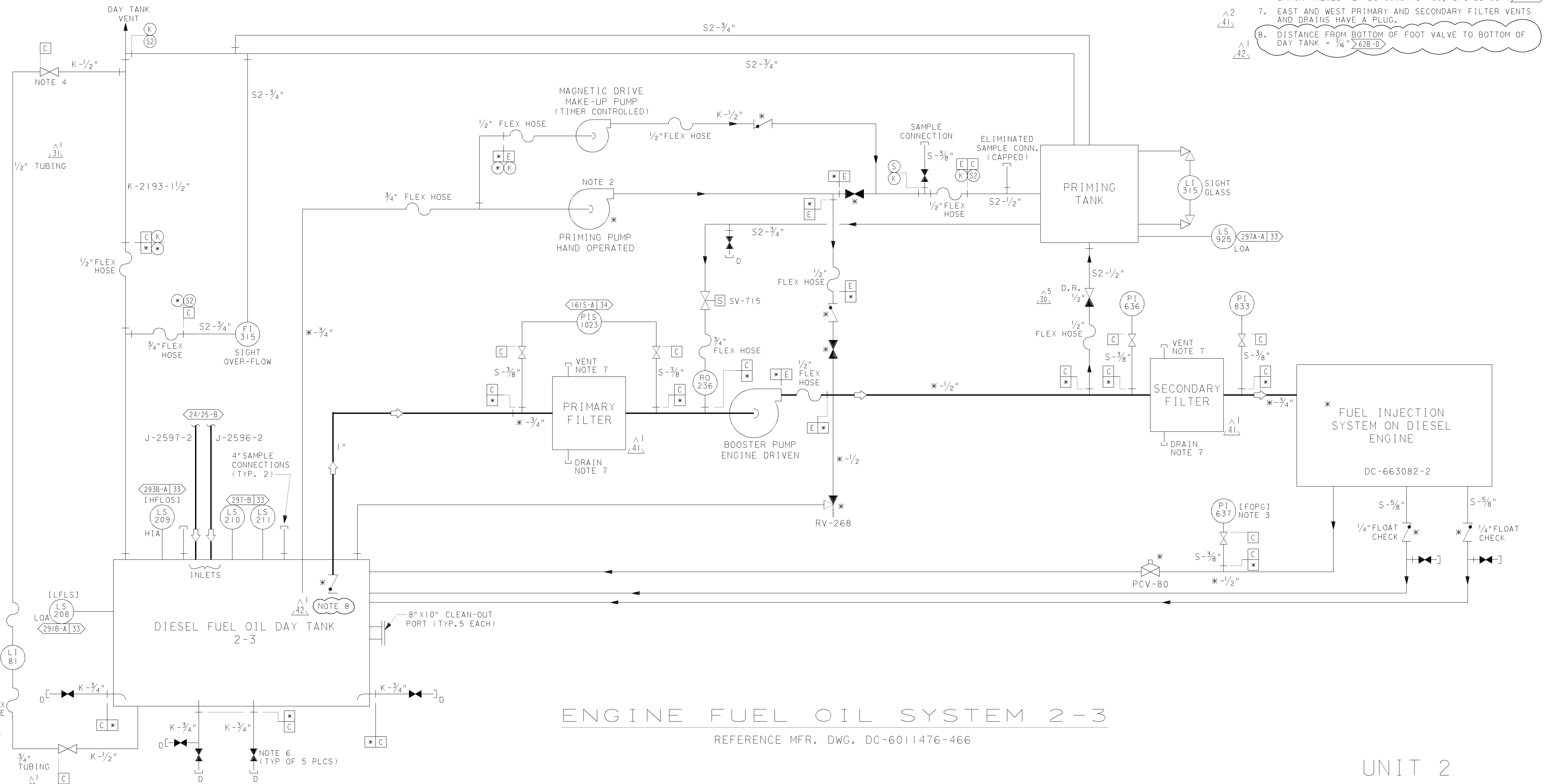


- NOTES:
- [ ] MANUFACTURER NO. IDENTIFICATION
  - MANUALLY OPERATED USED ON INITIAL START ONLY >63B-B
  - MOUNTED ON ENGINE CONTROL PANEL >67B-D
  - MANUAL VALVE PER DC 6006473-39, S/C 93-6840 >60B-A
  - \* DENOTES MANUFACTURER SUPPLIED INSTRUMENTS AND EQUIPMENT. IT IS ACCEPTABLE TO REPLACE MANUFACTURER SUPPLIED INSTRUMENT TUBING WITH PG&E SUPPLIED S-SPEC STAINLESS STEEL TUBING
  - DRAIN VALVES PER DC 6006473-166, S/C 93-6841 >61B-E
  - EAST AND WEST PRIMARY AND SECONDARY FILTER VENTS AND DRAINS HAVE A PLUG.
  - DISTANCE FROM BOTTOM OF FOOT VALVE TO BOTTOM OF DAY TANK = 7/16" >62B-D



ENGINE FUEL OIL SYSTEM 2-3  
 REFERENCE MFR. DWG. DC-6011476-466

UNIT 2

DIABLO CANYON POWER PLANT - PG&E CO.			
DIESEL ENGINE-GENERATOR ASSOCIATED SYSTEMS			
DRAWING	SHEET	PAGE	REV
108021	6B	0	42

01-03-2013	AJFJ	FxC2		KERSI J. DALAL	MECHANICAL	M 16690	3/31/2014	REVISED PER DFT-7*1941
DATE	DWN	RE	1V	PROFESSIONAL ENGINEER	PE DISC.	PE#	PE EXP.	

RASTER=108021s6b.dgn  
 DGN=108021s6b.dgn  
 CAD User:AJFJ Date: 01-03-2013