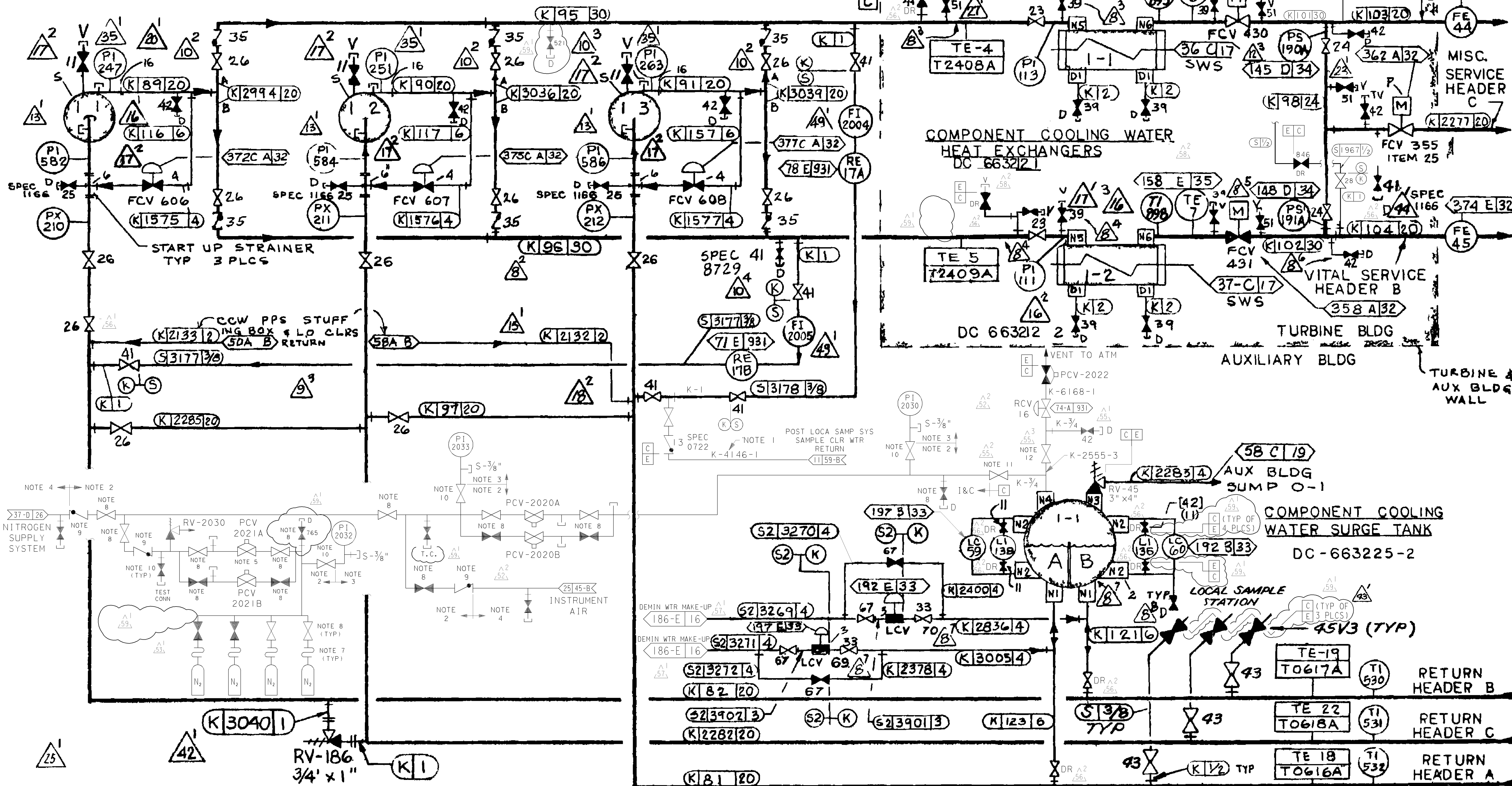


COMPONENT COOLING WATER PUMPS
DC-663213-1



- NOTES**
1. CODE CLASS E PORTION OF LINE 4146 SHALL BE SEISMICALLY ANALYZED TO DESIGN CLASS 1 CRITERIA
 2. INSTRUMENT DESIGN CLASSIFICATION ID
 3. INSTRUMENT DESIGN CLASSIFICATION IC
 4. INSTRUMENT DESIGN CLASSIFICATION II
 5. PCV HAS AN INTEGRAL RELIEF VALVE
 6. UNLESS SPECIFIED OTHERWISE THE SURGE TANK PRESSURIZATION LINES ARE 3/4" x 0.065" WALL SS TUBING
 7. 1/2" FLEXIBLE TUBING, SWAGelok NO. 8R-8
 8. WHITEY MODEL NO. SS-63ES12
 9. NUPRO MODEL NO. SS-CH16S12-1
 10. 3/8" WHITEY MODEL NO. SS-43ES6-SH
 11. STOCK CODE 93-6841
 12. STOCK CODE 95-4119

DIABLO CANYON POWER PLANT - PG&E CO.			
COMPONENT COOLING WATER SYSTEM			
DRAWING	SHEET	PAGE	REV
102014	5	0	59

07-27-2012	MNRU	Fxc2	KERSI J. DALAL	MECHANICAL	M 16690	3/31/2014	REVISED PER DFT-7*1630-0
DATE	DWN	RE	PROFESSIONAL ENGINEER	PE DISC.	PE#	PE EXP.	

RASTER=001H1099.dgn
 DGN=001H1099.dgn
 CAD User: MNRU Date: 07-27-2012