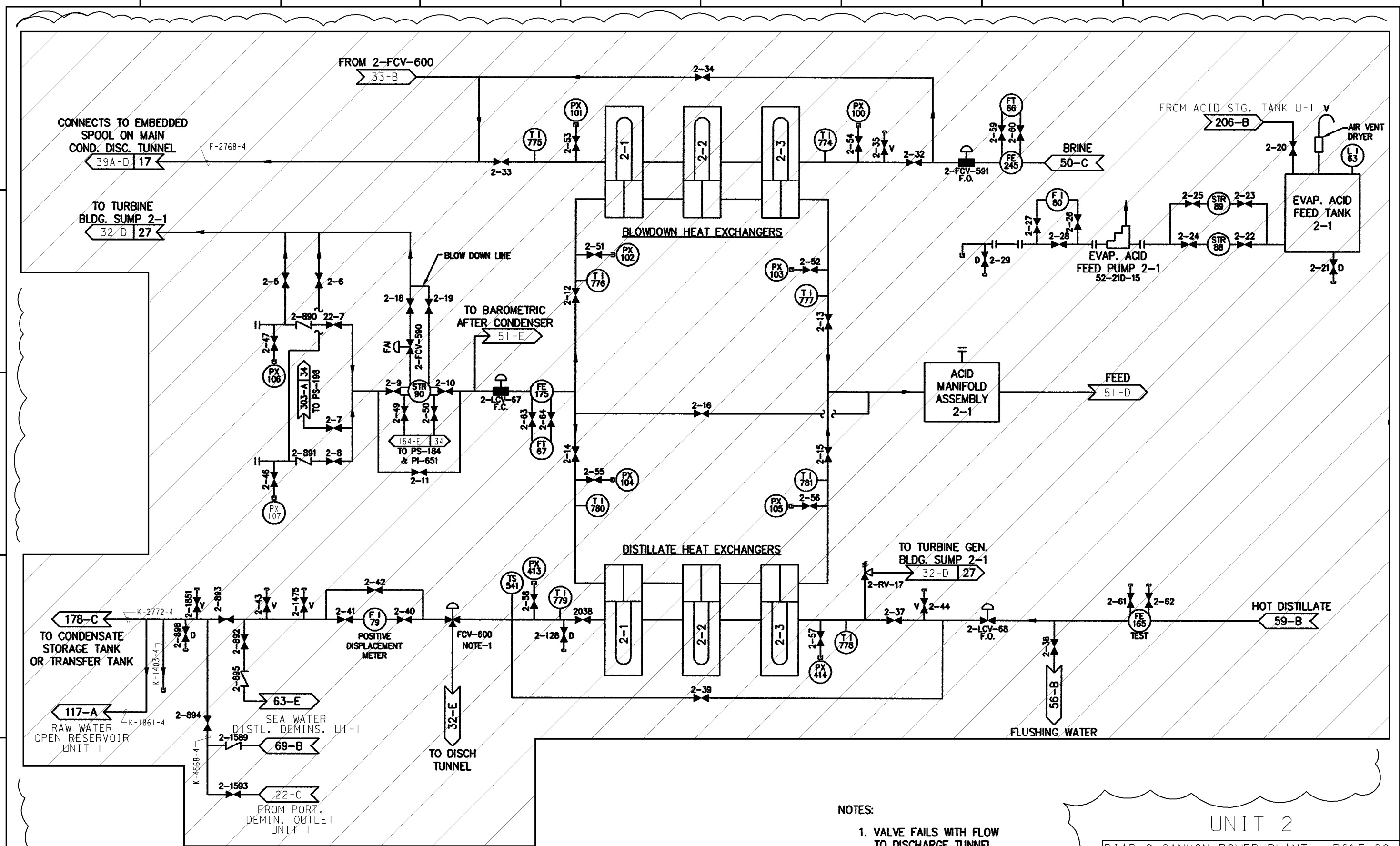


E
D
C
B
A

E
D
C
B
A



- NOTES:
1. VALVE FAILS WITH FLOW TO DISCHARGE TUNNEL.
 2. SHADED AREA ABANDONED EQUIP

UNIT 2

DIABLO CANYON POWER PLANT - PG&E CO.

DRAWING	SHEET	PAGE	REV
108016	3	0	51

RASTER=8016s03.dgn
 DGN=8016s03.dgn
 CAD User: MIBF Date: 01-06-2006

INPG1C
1 Size

01-06-2006	MIBF	KJD3		FRANCIS C. LING	MECHANICAL	M 16098	12/31/2007	REVISED PER FCT-030760
DATE	DWN	RE	IV	PROFESSIONAL ENGINEER	PE DISC.	PE#	PE EXP.	