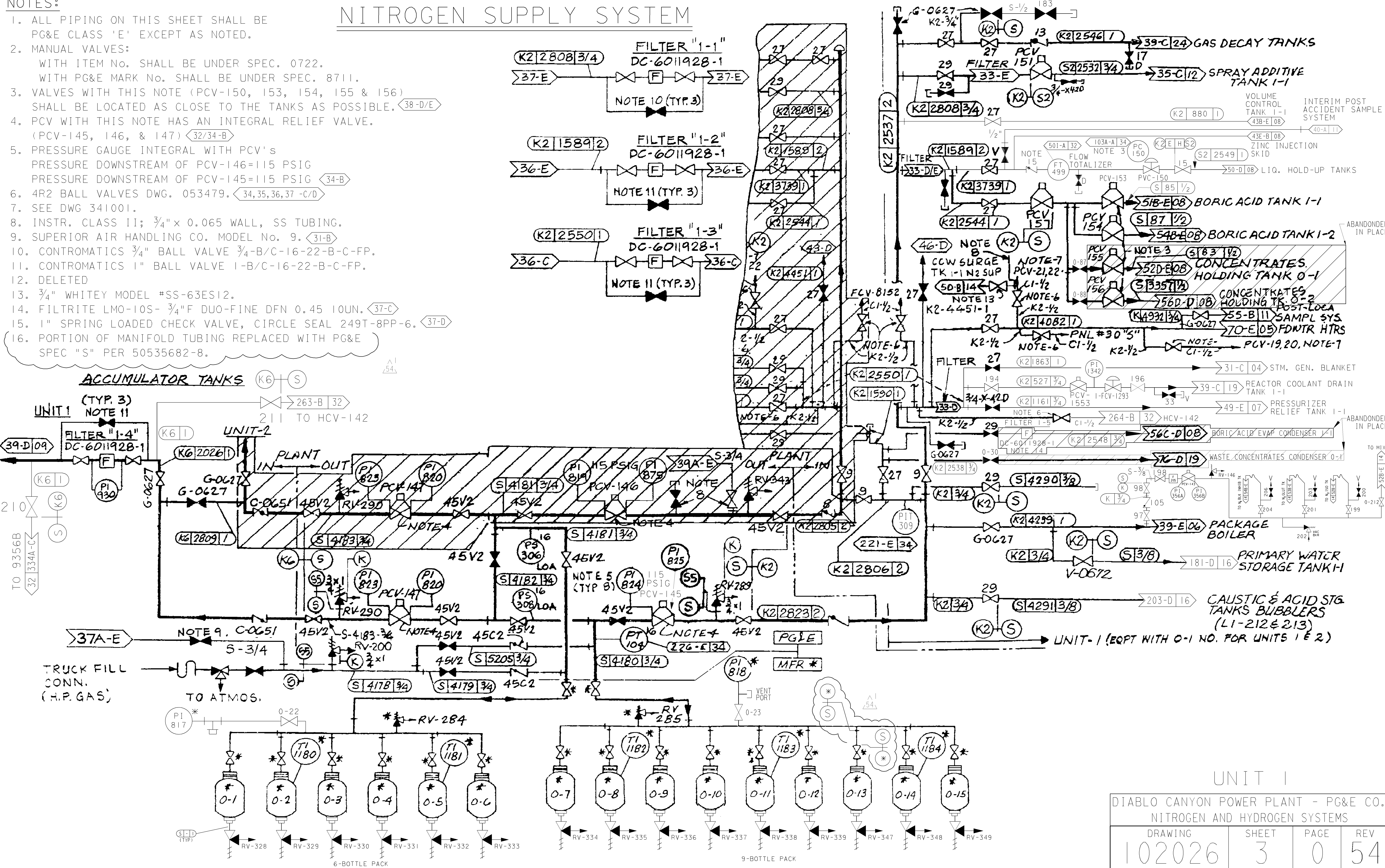


NOTES:

- ALL PIPING ON THIS SHEET SHALL BE PG&E CLASS 'E' EXCEPT AS NOTED.
- MANUAL VALVES: WITH ITEM NO. SHALL BE UNDER SPEC. 0722. WITH PG&E MARK NO. SHALL BE UNDER SPEC. 8711.
- VALVES WITH THIS NOTE (PCV-150, 153, 154, 155 & 156) SHALL BE LOCATED AS CLOSE TO THE TANKS AS POSSIBLE. (38-D/E)
- PCV WITH THIS NOTE HAS AN INTEGRAL RELIEF VALVE. (PCV-145, 146, & 147) (32/34-B)
- PRESSURE GAUGE INTEGRAL WITH PCV'S PRESSURE DOWNSTREAM OF PCV-146=115 PSIG PRESSURE DOWNSTREAM OF PCV-145=115 PSIG (34-B)
- 4R2 BALL VALVES DWG. 053479. (34,35,36,37 -C/D)
- SEE DWG 341001.
- INSTR. CLASS II; 3/4" x 0.065 WALL, SS TUBING.
- SUPERIOR AIR HANDLING CO. MODEL NO. 9. (31-B)
- CONTROMATICS 3/4" BALL VALVE 3/4-B/C-16-22-B-C-FP.
- CONTROMATICS 1" BALL VALVE 1-B/C-16-22-B-C-FP.
- DELETED
- 3/4" WHITEY MODEL #SS-63ES12.
- FILTRITE LMO-10S- 3/4"F DUO-FINE DFN 0.45 1OUN. (37-C)
- 1" SPRING LOADED CHECK VALVE, CIRCLE SEAL 249T-8PP-6. (37-D)
- PORTION OF MANIFOLD TUBING REPLACED WITH PG&E SPEC "S" PER 50535682-8.

NITROGEN SUPPLY SYSTEM



DIABLO CANYON POWER PLANT - PG&E CO.			
NITROGEN AND HYDROGEN SYSTEMS			
DRAWING	SHEET	PAGE	REV
102026	3	0	54

RASTER=2026s3.dgn
 DCN=2026s3.dgn
 CAD User: ZNS4 DDate: 12-09-2014