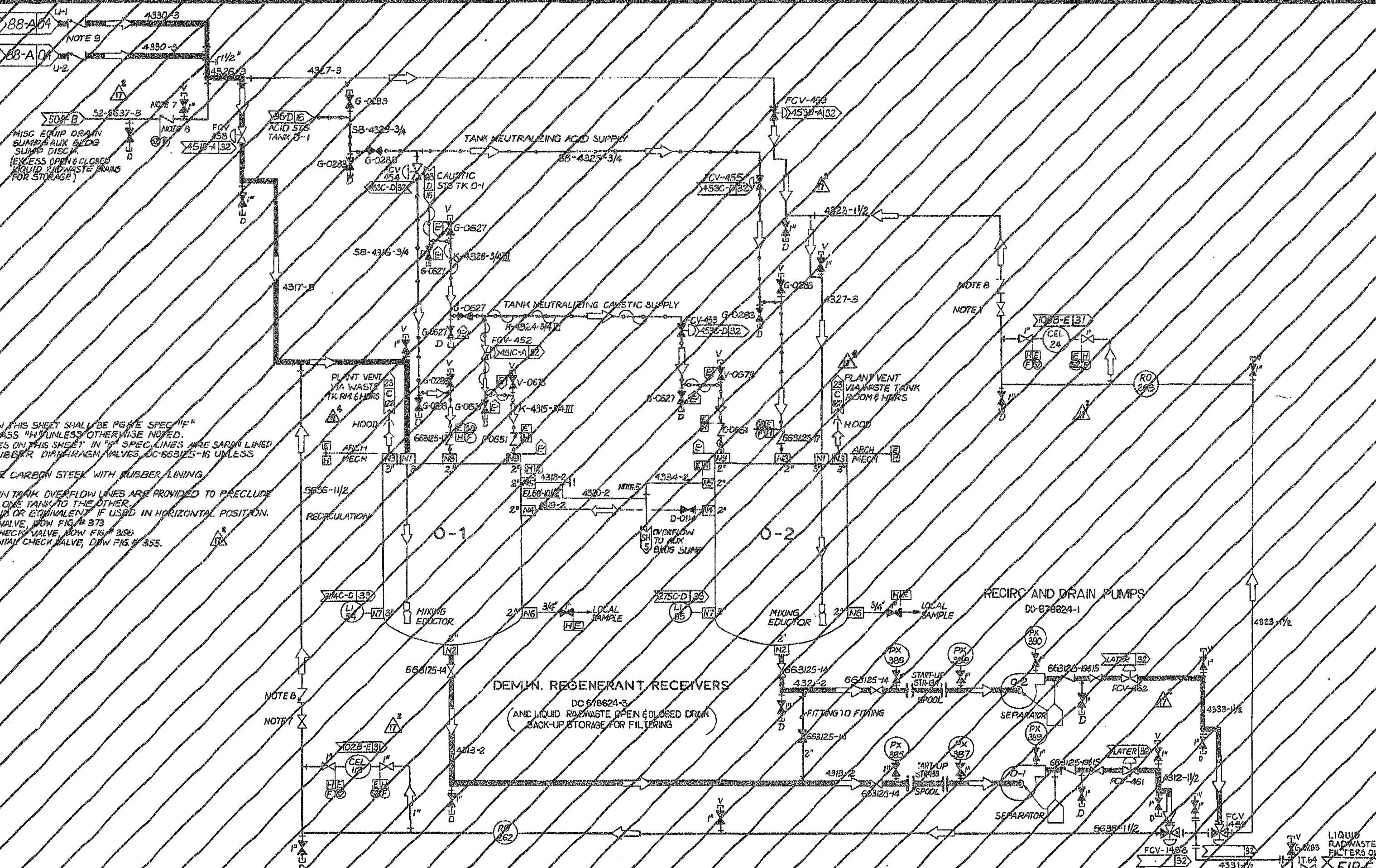


STM 650  
BLD DOWN  
DEMIN REGEN  
LIQUID EFFLUENT



- NOTES
1. ALL PIPING ON THIS SHEET SHALL BE PG&E SPEC "IF" AND CODE CLASS "H" UNLESS OTHERWISE NOTED.
  2. ALL 1" VALVES ON THIS SHEET IN "H" SPEC. LINES ARE SARM LINED NATURAL RUBBER DIAPHRAGM VALVES, DC-663125-16 UNLESS NOTED.
  3. TANKS TO BE CARBON STEEL WITH RUBBER LINING.
  4. DETELED
  5. DOP SEAL IN TANK OVERFLOW LINES ARE PROVIDED TO PRECLUDE FLOW FROM ONE TANK TO THE OTHER.
  6. DC-663125-16 OR EQUIVALENT IF USED IN HORIZONTAL POSITION.
  7. DIAPHRAGM VALVE, DOW FIG # 373
  8. VERTICAL CHECK VALVE, DOW FIG # 358
  9. 3" φ HORIZONTAL CHECK VALVE, DOW FIG # 355.

UNIT 2

**P. G. & E. CO.**

DRAWING NUMBER: **108019**

REVISION: **18**

SHEET 6A OF SHEETS

MICROFILM

RM 1-DEX REV. 18

LIQUID RADWASTE FILTERS 0105  
SIB E