

A

B

C

D

E

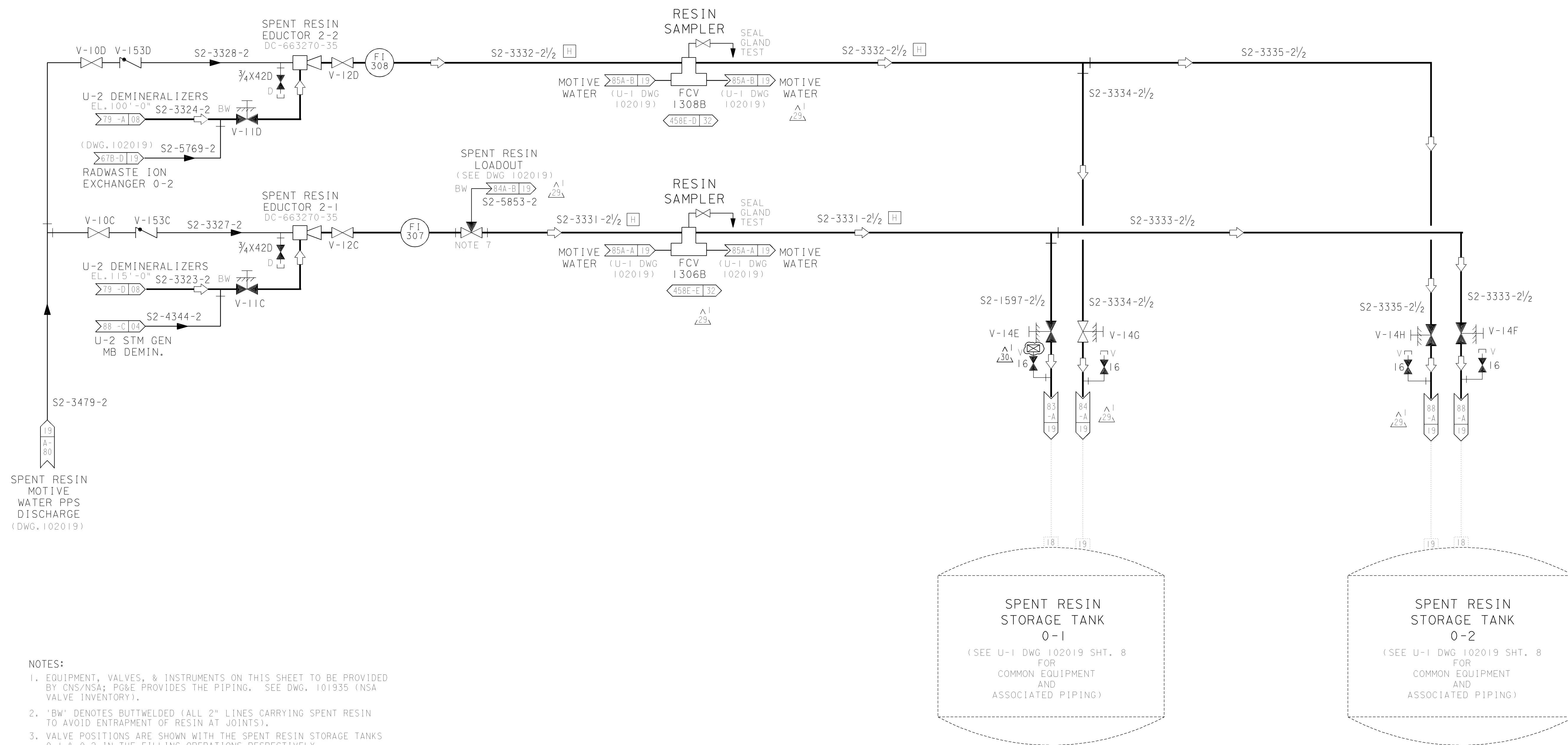
A

B

C

D

E



NOTES:

1. EQUIPMENT, VALVES, & INSTRUMENTS ON THIS SHEET TO BE PROVIDED BY CNS/NSA; PG&E PROVIDES THE PIPING. SEE DWG. 101935 (NSA VALVE INVENTORY).
2. 'BW' DENOTES BUTTWELDED (ALL 2" LINES CARRYING SPENT RESIN TO AVOID ENTRAPMENT OF RESIN AT JOINTS).
3. VALVE POSITIONS ARE SHOWN WITH THE SPENT RESIN STORAGE TANKS 0-1 & 0-2 IN THE FILLING OPERATIONS RESPECTIVELY.
4. PG & E VALVES WITH ITEM NUMBERS ARE SPECIFIED ON SPEC. 0722.
5. ALL PIPING ON THIS SHEET SHALL BE PG & E CODE CLASS "H", EXCEPT RESIN SAMPLING SYSTEM, AND AS NOTED.
6. AUTOMATIC RESIN SAMPLE COLLECTION DEVICES (PG & E CODE CLASS "E") ARE LOCATED AT COORDINATES: 84-A/B
7. 2" DIAM. 3-WAY BALL VALVE, BW ENDS, PITTSBURG BRASS MANUFACTURING CO., MODEL NO. MP-H-17BW/2 P0/CO/0E/1S FLOW PATTERN NO.2, 316 SS. 83-B



UNIT 2

P G & E CO.		108019	REV.
SHEET 8	PAGE 0		30

6/19/03	RHS1	RXG2	-	KERSI J. DALAL	MECHANICAL	M 16690	3/31/2004	Revised per FCT 027618
DATE	DWN	RE	IV	PROFESSIONAL ENGINEER	PE DISC.	PE#	PE EXP.	

CAD User:RHS1 DoHe 6-18-2003 DCN=801958.DGN